

Connecting Your PDA to the Wireless Network

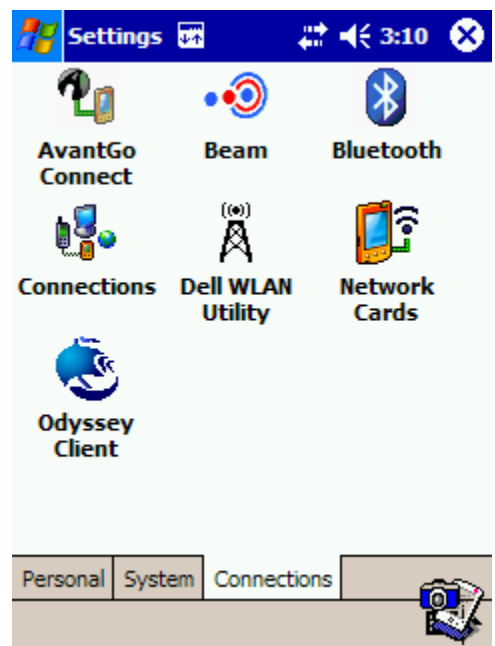
Before setting up your PDA for wireless use, make certain you have activated your wireless account. (See: <http://www.hsc.wvu.edu/its/HelpDesk/Documentation.aspx>)

Instructions for Dell Axim Wireless

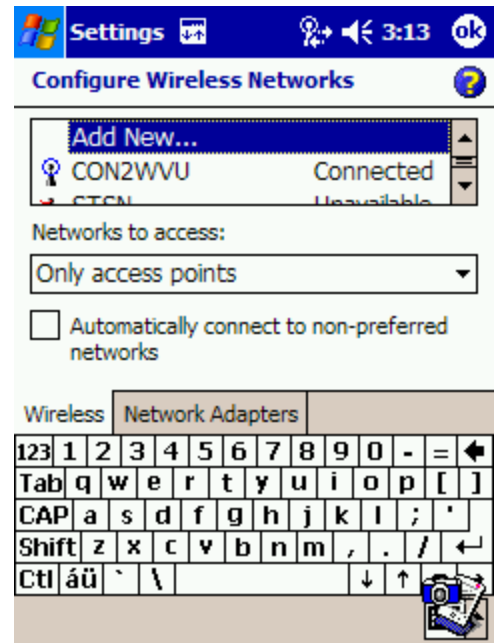
1. Make sure your Dell wireless network card is turned on. This feature is usually accessible through a physical button on the exterior of the Dell PDA. If you are unsure of which button activates your wireless network card, please check the documentation that came with your PDA.
2. From the **Start** menu choose **Settings**.



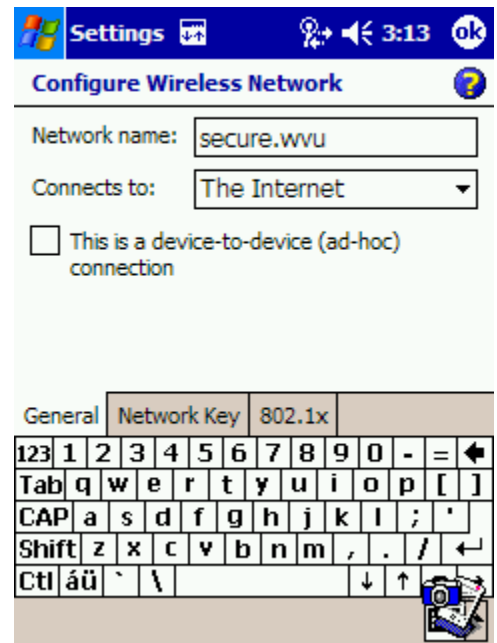
3. On the **Connections** tab, choose the **Network Cards** option.



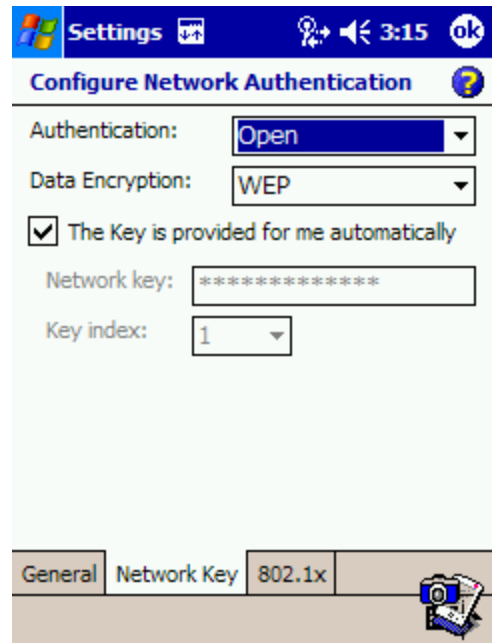
4. On the **Wireless** tab, select **Add New...**



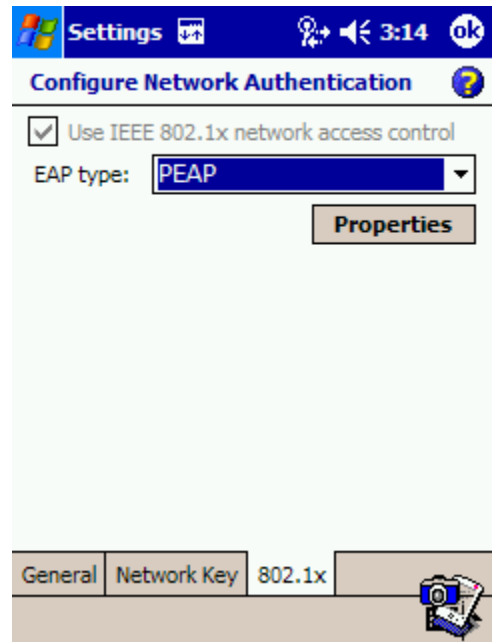
5. On the **General** tab, enter **secure.wvu** in the **Network name** box. Under the **Connects to** drop-down box, choose **The Internet**. Click on the **Network Key** tab.



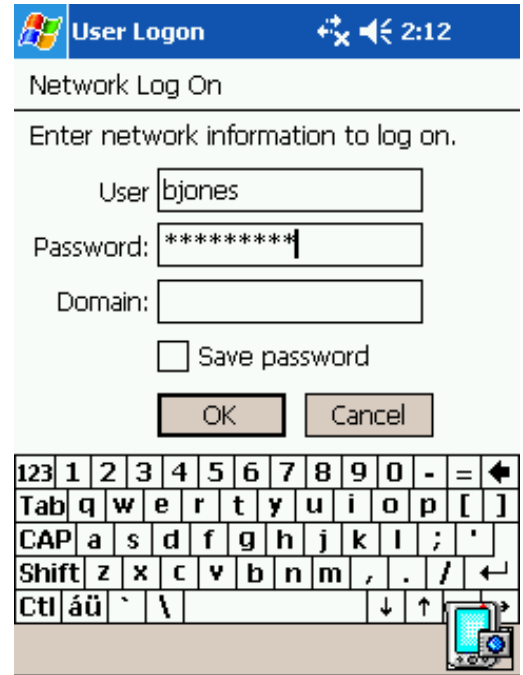
- In the **Authentication** drop-down box, choose **Open**. In the **Data Encryption** drop-down box, choose **WEP**. Make sure **The Key is provided for me automatically** box is checked. Click on the **802.1x** tab.



- In the **EAP type** drop-down box, choose **PEAP**.
- Click **OK** on all open windows to close them.



9. If the PDA is in range of a **secure.wvu** wireless access point, a login screen will appear after a short wait. Enter the **User** and **Password** information sent to you upon registration at **wireless.wvu.edu**. Click **OK**.
10. You are now connected to the **secure.wvu** wireless network.



These instructions were prepared using a Dell Axim PDA operating on the Pocket PC 2003 operating system, which may vary slightly to your PDA menus. If you are having problems configuring or connecting to the wireless network with your PDA, help is available at the HSC Help Desk at 293-3631.