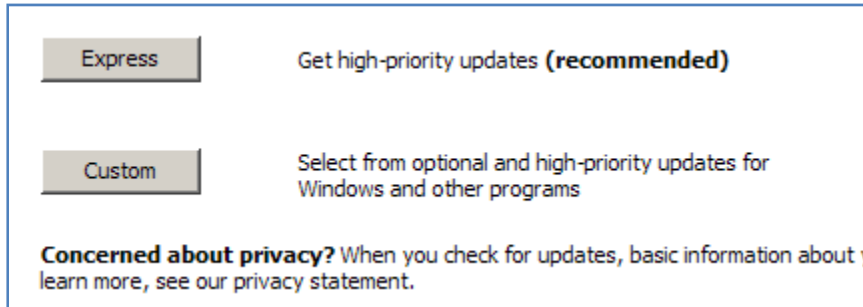
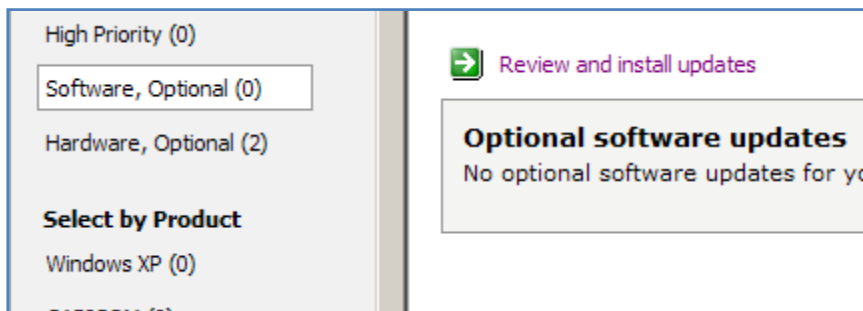


If you are a Windows XP user please follow these steps to connect to WVU.Encrypted Wireless:

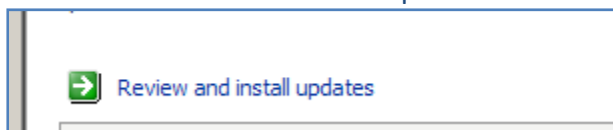
- Click on your “Start” button, then select “All Programs”, then “Windows Updates”
- In the Welcome screen under “Keep your computer up to date” click on the “Custom” button.



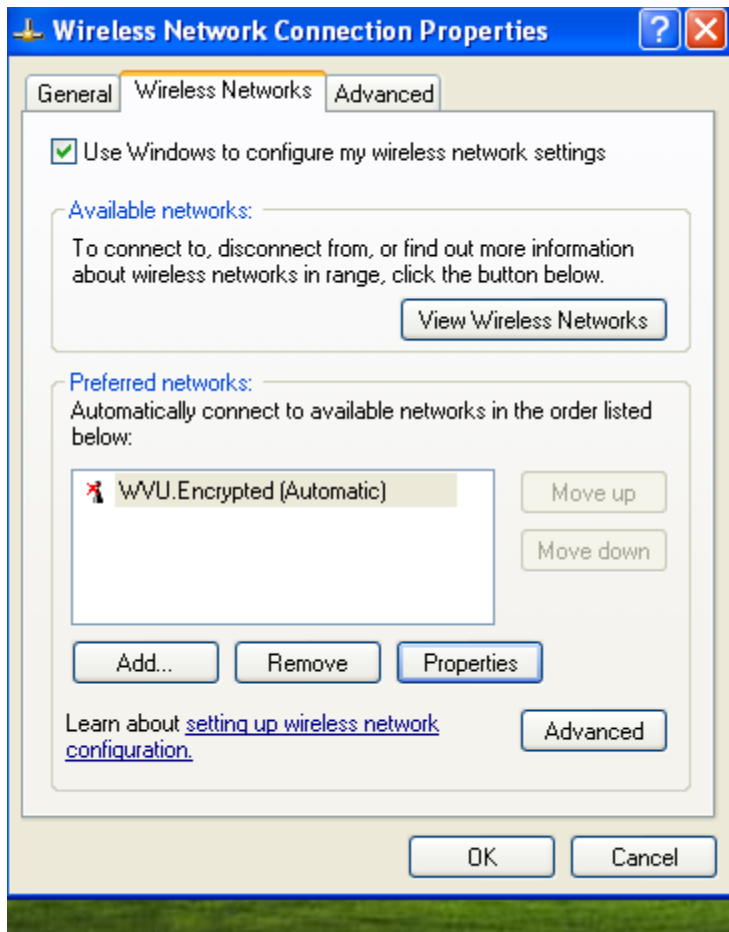
- On the left hand side, select “Software, Optional”



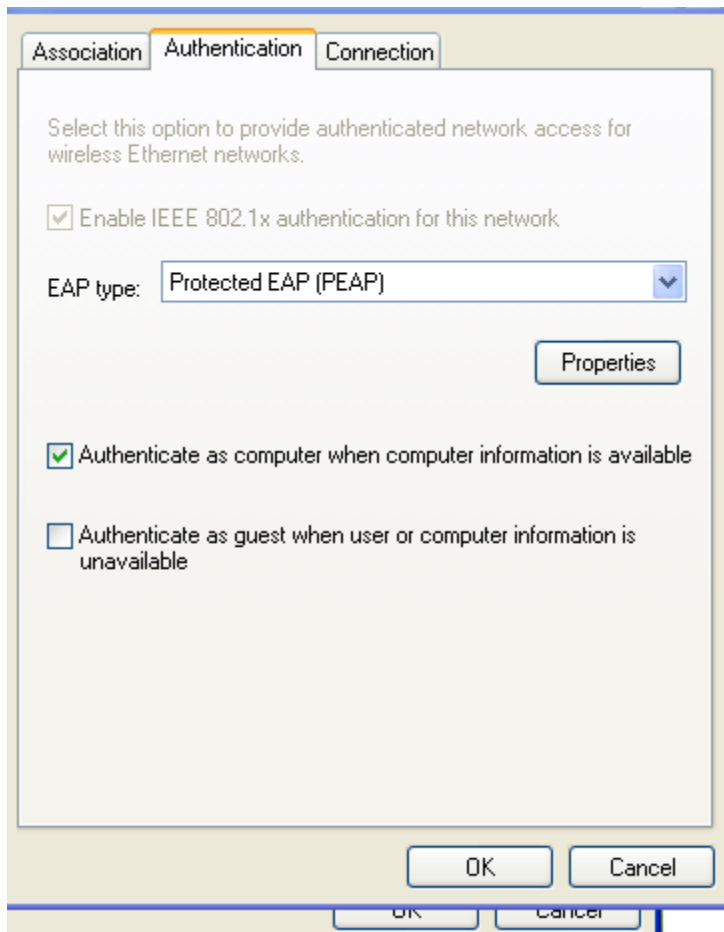
- From the list of updates select “Update for root certificates November 2009”
- Click “Review and install updates”



- Then click the “Install Updates” button.
- After updates have completed go to your Control Panel from the Start Menu
- Double click “Network Connections”
- RIGHT Click on your wireless network connection, and select “Properties”
- Select the “Wireless Networks” tab



- Select WVU.Encrypted from the list.
- Click "Properties"



- Select the “Authentication” tab.
- Select “Properties”
- Under the “Trusted Root Certification Authorities” do the following:
  - Uncheck IPS Servidores
  - Check ipsCA Global CA Root

Validate server certificate

Connect to these servers:

Trusted Root Certification Authorities:

- http://www.valicert.com/
- http://www.valicert.com/
- http://www.valicert.com/
- I.CA - Qualified root certificate
- I.CA - Standard root certificate
- IGC/A
- InfoNotary CSP Root

Do not prompt user to authorize new servers or trusted certification authorities.

Select Authentication Method:

Secured password (EAP-MSCHAP v2)

Enable Fast Reconnect

Enable Quarantine checks

Disconnect if server does not present cryptobinding TLV

2/2 At 6.2" Ln 4 Col 1 REC TRK EXT OVR

- Click OK
- Click OK again.