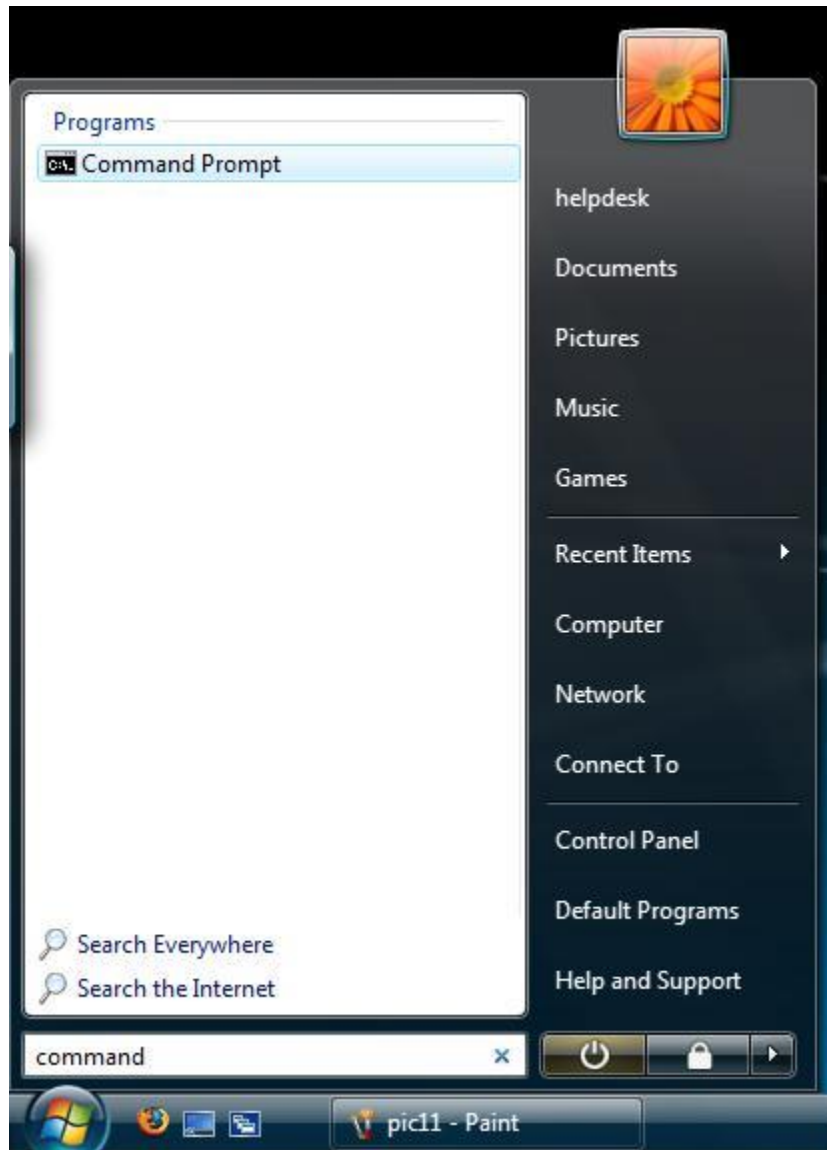
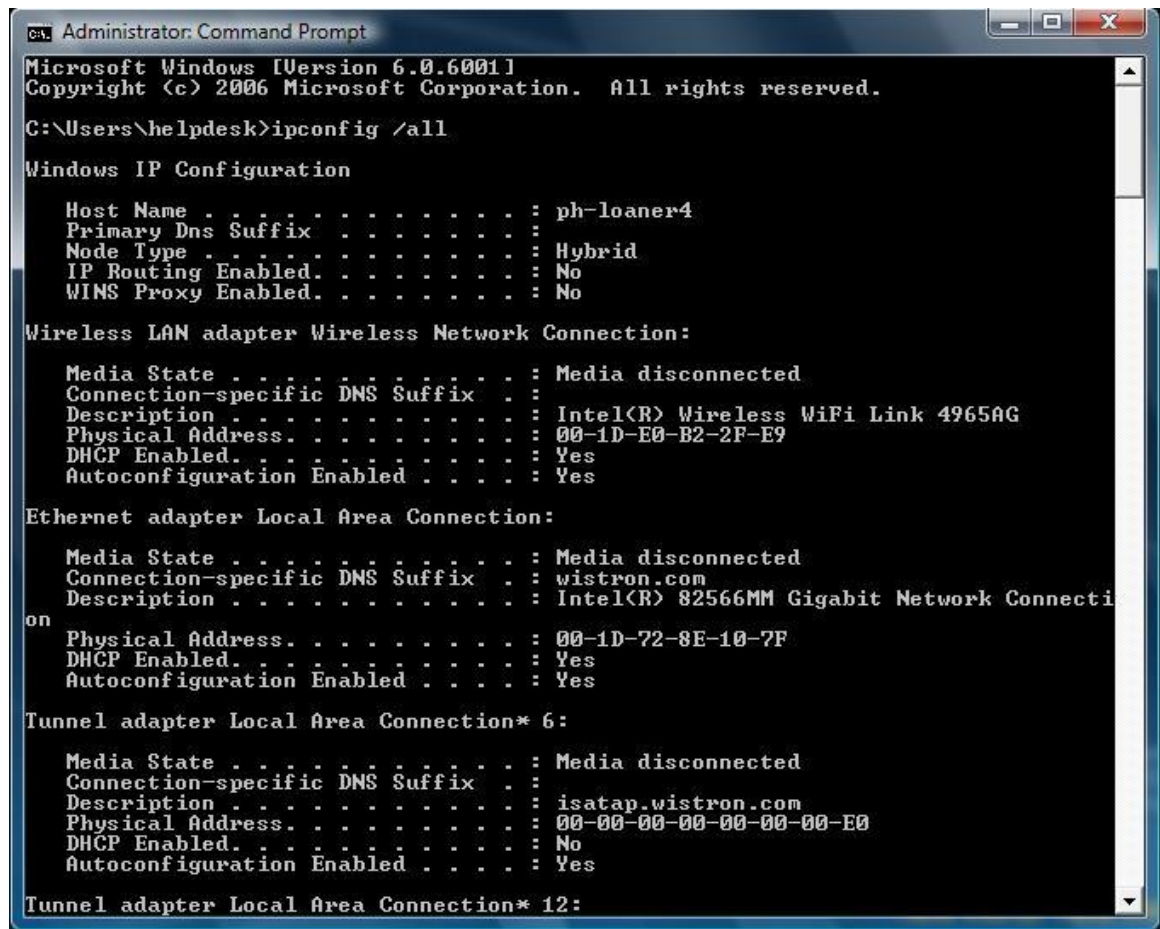


Getting your Hardware Address in Windows Vista

1. Click on the Windows button, then in the Start Search box type command.



- At the command prompt, type `ipconfig /all`. Once there, find your Ethernet Local Area Connection Physical Address and submit it for registration for our inside WVa.home wireless network.



```
Administrator: Command Prompt
Microsoft Windows [Version 6.0.6001]
Copyright (c) 2006 Microsoft Corporation. All rights reserved.

C:\Users\helpdesk>ipconfig /all

Windows IP Configuration

Host Name . . . . . : ph-loaner4
Primary Dns Suffix . . . . . :
Node Type . . . . . : Hybrid
IP Routing Enabled. . . . . : No
WINS Proxy Enabled. . . . . : No

Wireless LAN adapter Wireless Network Connection:

Media State . . . . . : Media disconnected
Connection-specific DNS Suffix . . . . . :
Description . . . . . : Intel(R) Wireless WiFi Link 4965AG
Physical Address. . . . . : 00-1D-E0-B2-2F-E9
DHCP Enabled. . . . . : Yes
Autoconfiguration Enabled . . . . . : Yes

Ethernet adapter Local Area Connection:

Media State . . . . . : Media disconnected
Connection-specific DNS Suffix . . . . . : wistron.com
Description . . . . . : Intel(R) 82566MM Gigabit Network Connection
Physical Address. . . . . : 00-1D-72-8E-10-7F
DHCP Enabled. . . . . : Yes
Autoconfiguration Enabled . . . . . : Yes

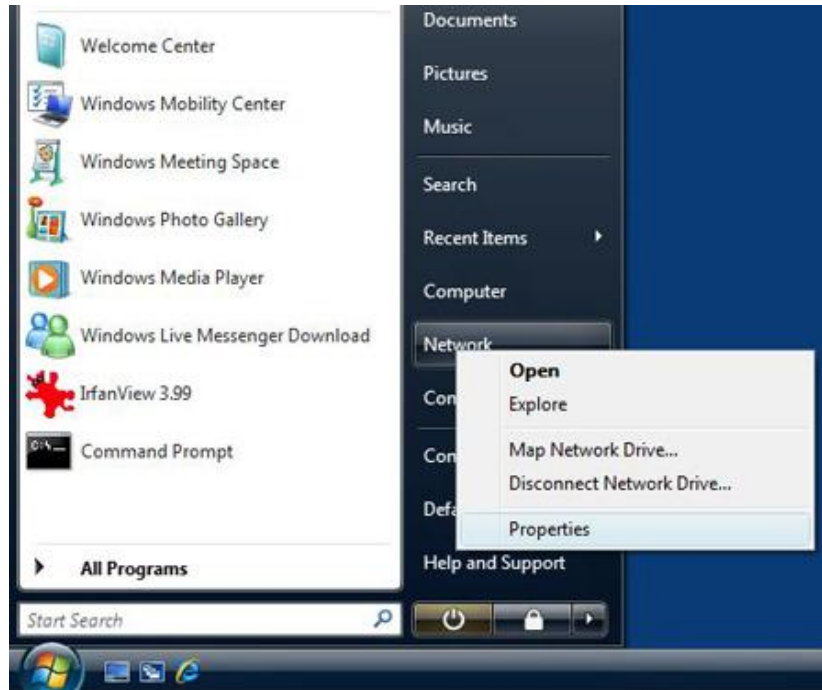
Tunnel adapter Local Area Connection* 6:

Media State . . . . . : Media disconnected
Connection-specific DNS Suffix . . . . . :
Description . . . . . : isatap.wistron.com
Physical Address. . . . . : 00-00-00-00-00-00-00-E0
DHCP Enabled. . . . . : No
Autoconfiguration Enabled . . . . . : Yes

Tunnel adapter Local Area Connection* 12:
```

Configure Windows Vista with WVa.home wireless.

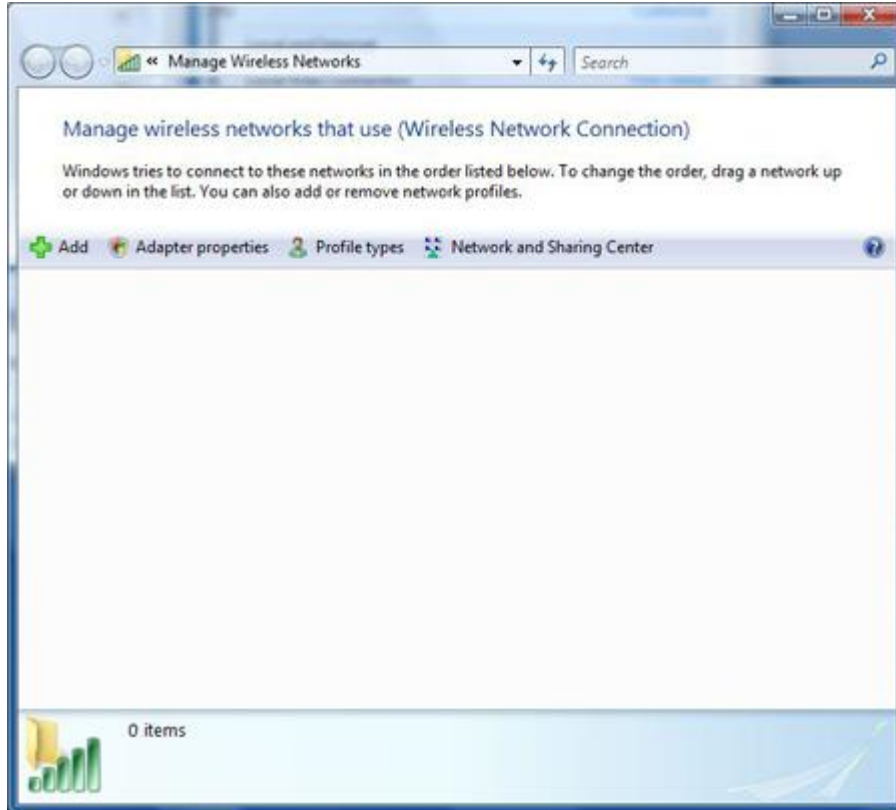
1. Open your Start Menu, right click on "Network" in the right hand column, and click on "Properties."



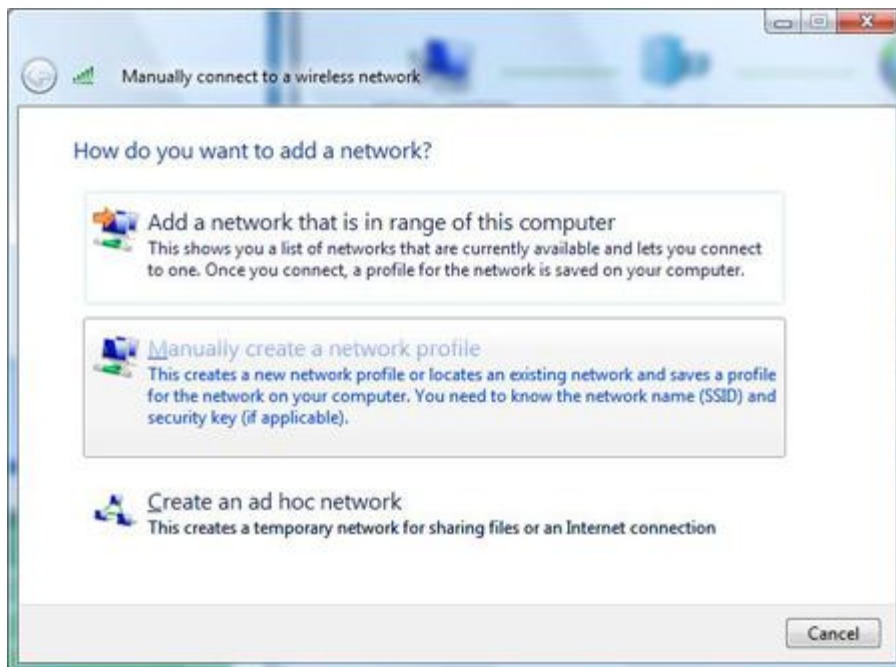
2. In the left-hand column of the Network and Sharing Center, click on "Manage Wireless Networks."



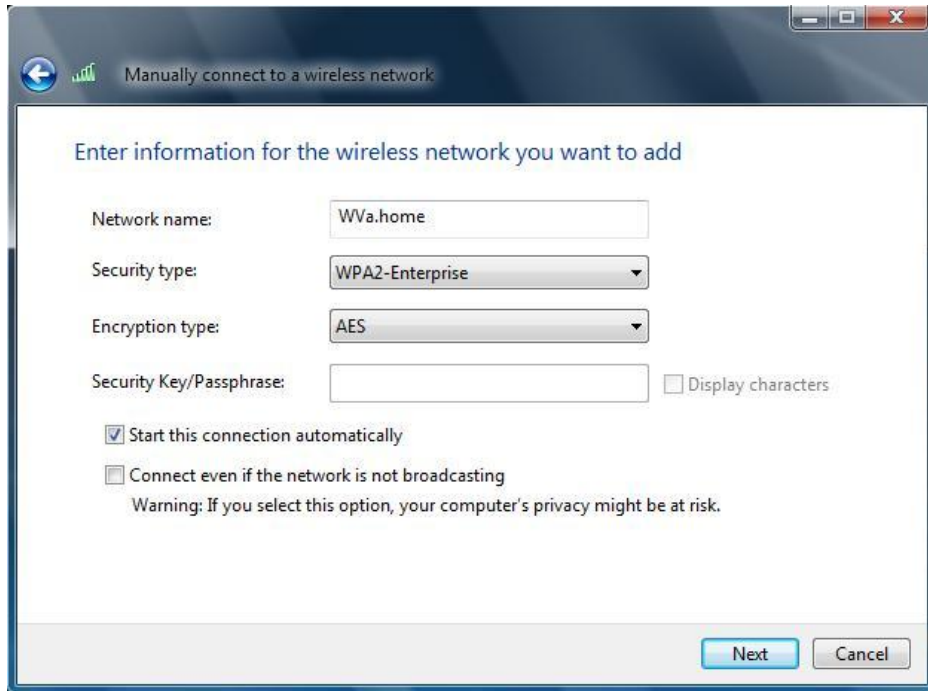
3. Click the green plus-sign (+) to Add a new connection.



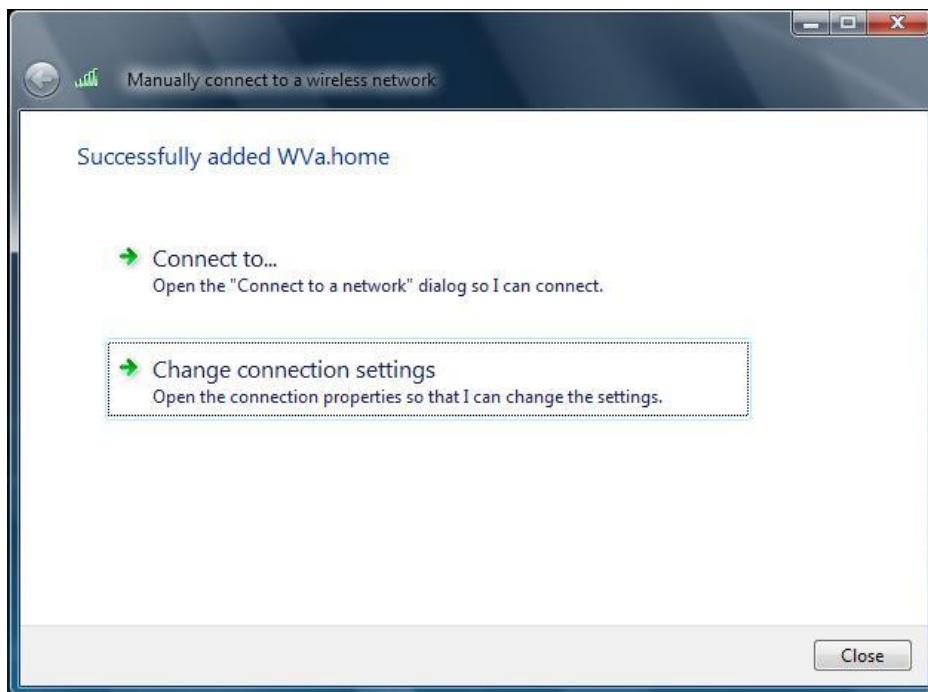
4. Select "Manually create a network profile."



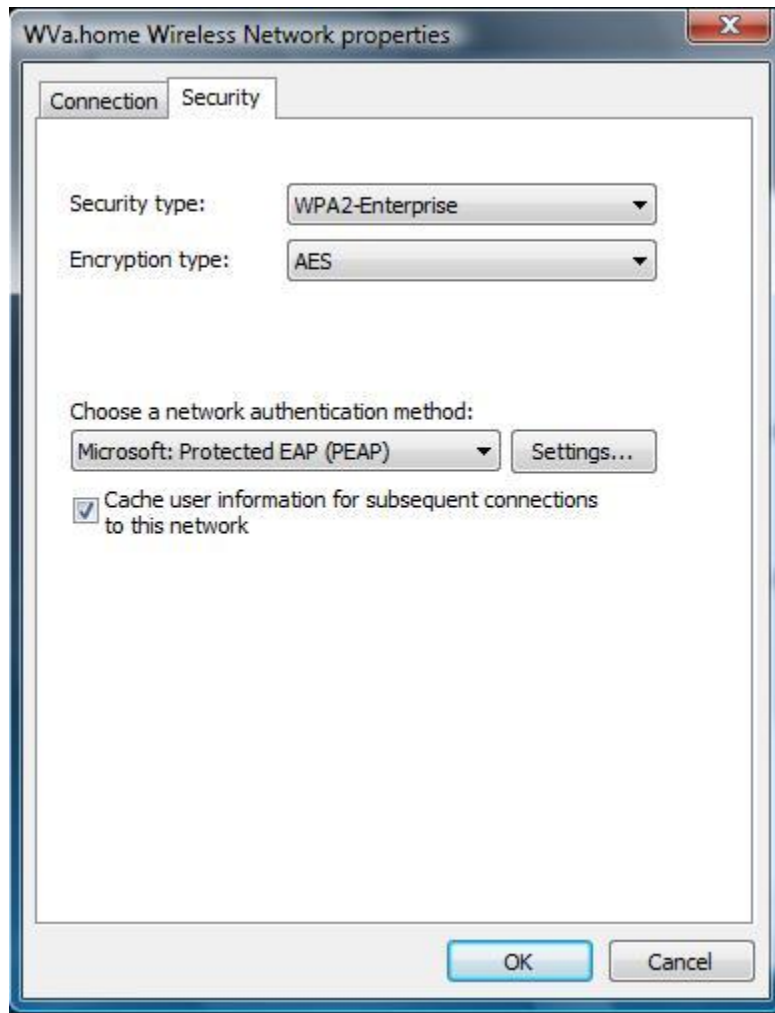
5. Enter the network name as WVa.Home, select security type WPA2-Enterprise. Click "Next."



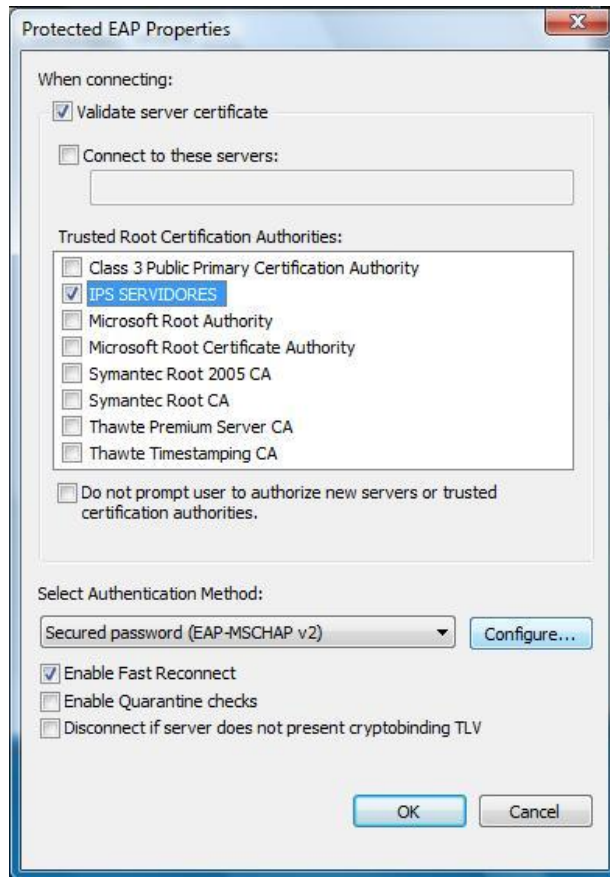
Choose "Change connection settings."



6. Click to the Security tab. Make sure the authentication method is Protected EAP (PEAP) and then click the Settings button.



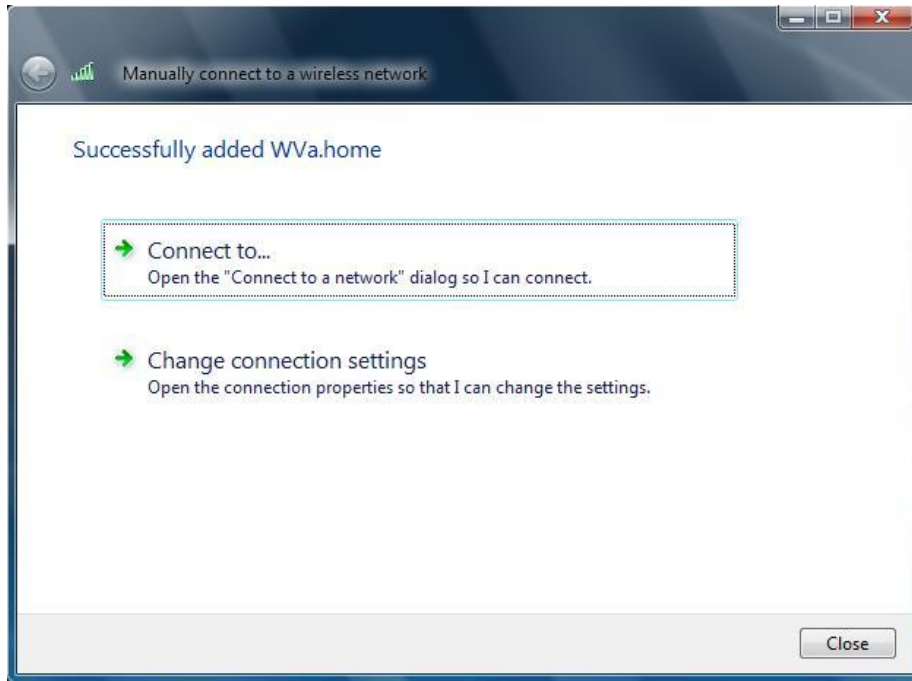
7. Check the box to validate server certificates. If your root certificate list includes IPS Servidores, check that box as well. Make sure the authentication method is EAP-MSCHAP v2, and **click the Configure button**.



8. Make sure the option to "Automatically connect" is checked.



9. Click OK on all windows until you see the option to "Connect to...", and select that option.



10. If you are prompted to select a network, select WVa.Home and press Connect again.

