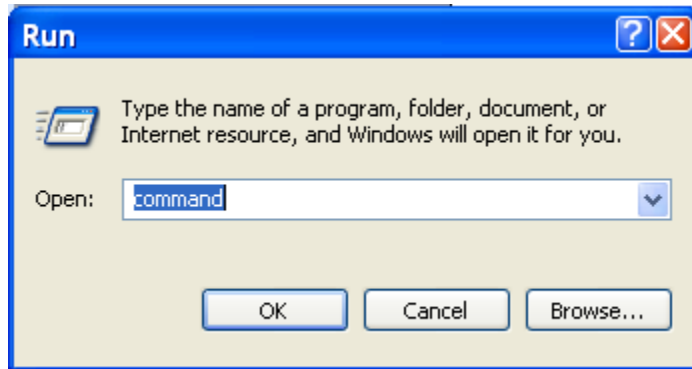


## Configure Windows XP to Connect to WVa.Home

The first thing to do when connecting the WVa.Home is to make sure your wireless card is registered with the help desk to gain access to the inside wireless.

1. Click on Start, Run and at Run box type **command** and press Enter.



2. After pressing enter, the C:/ prompt will display. At this box, type ipconfig /all and press enter. After that you will see your Ethernet Adapter settings and your Wireless Adapter settings. Call the Help Desk with your 12 digit Wireless Physical Address.

```
C:\WINDOWS\system32\command.com
Microsoft(R) Windows DOS
(C)Copyright Microsoft Corp 1990-2001.

C:\DOCUMENTS\JMARTON>ipconfig /all

Windows IP Configuration

    Host Name . . . . . : jmartonz60t
    Primary Dns Suffix . . . . . : hsc.wvu.edu
    Node Type . . . . . : Hybrid
    IP Routing Enabled. . . . . : No
    WINS Proxy Enabled. . . . . : No
    DNS Suffix Search List. . . . . : hsc.wvu.edu
                                        rcbhsc.wvu.edu
                                        wvu.edu
                                        wsu.edu

Ethernet adapter Wireless Network Connection:

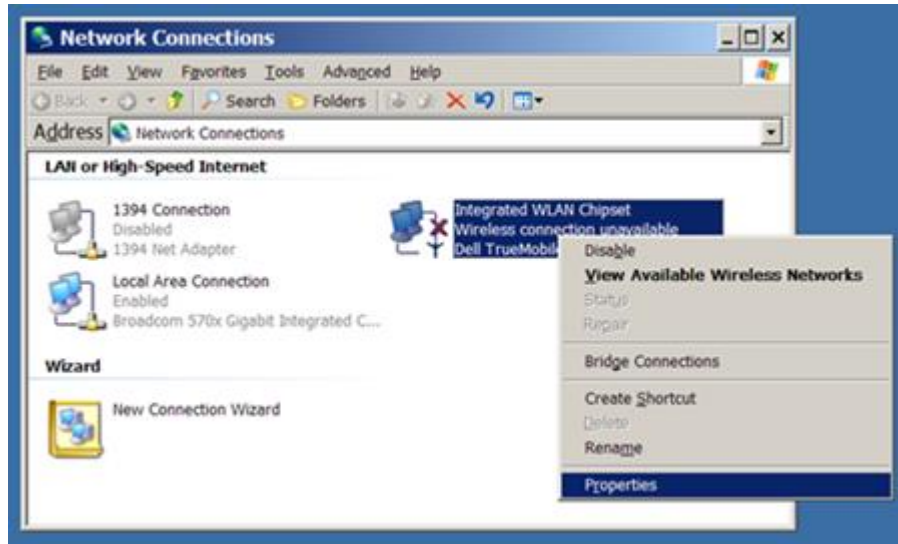
    Connection-specific DNS Suffix . : Belkin
    Description . . . . . : 11a/b/g Wireless LAN Mini PCI Express Adapter
    Physical Address. . . . . : 00-16-CE-6E-2A-ED
    Dhcp Enabled. . . . . : Yes
    Autoconfiguration Enabled . . . . : Yes
    IP Address. . . . . : 192.168.2.3
    Subnet Mask . . . . . : 255.255.255.0
    Default Gateway . . . . . : 192.168.2.1
    DHCP Server . . . . . : 192.168.2.1
    DNS Servers . . . . . : 192.168.2.1
    Lease Obtained. . . . . : Thursday, October 23, 2008 6:09:47 PM
    Lease Expires . . . . . : Monday, January 18, 2038 11:14:07 PM

C:\DOCUMENTS\JMARTON>
```

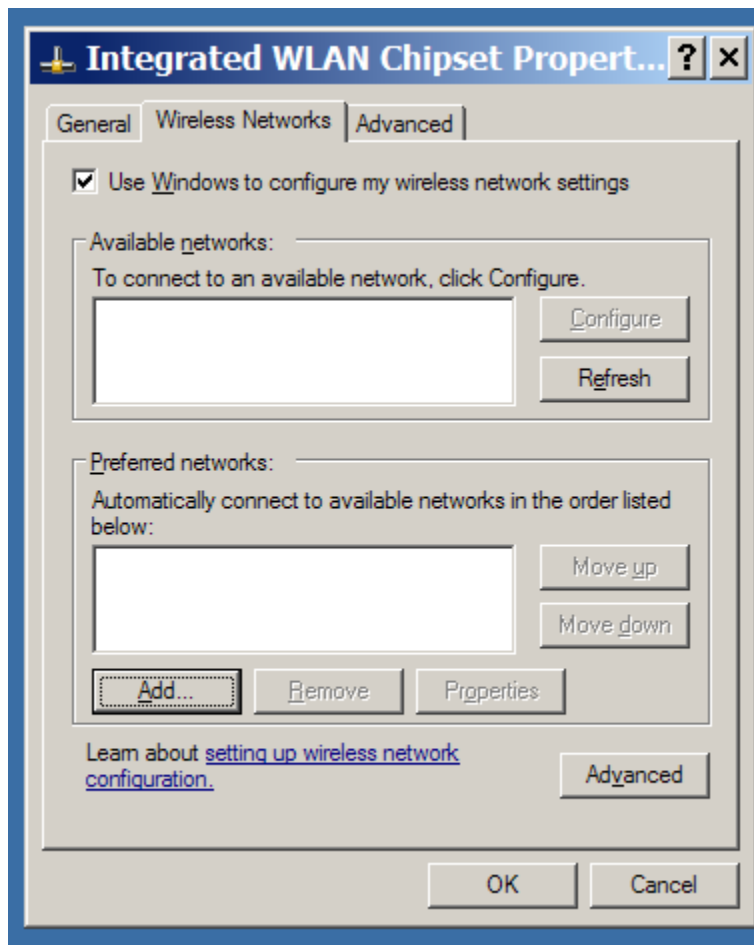
3. Once the Physical Address is registered, then proceed with the setup to the WVa.Home wireless.

#### 4. Preconfiguring your client: Windows XP Professional

- Open the Network Connections control panel. If "My Network Places" is on your desktop, right click My Network Places and select Properties. Or, you can access the Network Connections control panel through the Start menu, under Settings.
- Right click on your wireless adapter, and choose Properties.



- Click to the Wireless Networks tab of the adapter properties window, and verify that "Use Windows to configure my wireless settings" is selected. Click to Add a new preferred network.



- Enter WVa.Home as the SSID. Select WPA authentication and AES encryption.

The image shows a Windows XP-style dialog box titled "Wireless network properties". It has three tabs: "Association", "Authentication", and "Connection". The "Authentication" tab is selected. The "Network name (SSID)" field contains "Wva.home". There is a checkbox for "Connect even if this network is not broadcasting" which is unchecked. A section titled "Wireless network key" contains the text "This network requires a key for the following:". Below this, "Network Authentication" is set to "WPA" and "Data encryption" is set to "AES". There are empty text boxes for "Network key" and "Confirm network key". The "Key index (advanced)" is set to "1". A checkbox "The key is provided for me automatically" is checked. At the bottom, there is an unchecked checkbox "This is a computer-to-computer (ad hoc) network; wireless access points are not used". "OK" and "Cancel" buttons are at the bottom right.

Wireless network properties

Association Authentication Connection

Network name (SSID): Wva.home

Connect even if this network is not broadcasting

Wireless network key

This network requires a key for the following:

Network Authentication: WPA

Data encryption: AES

Network key:

Confirm network key:

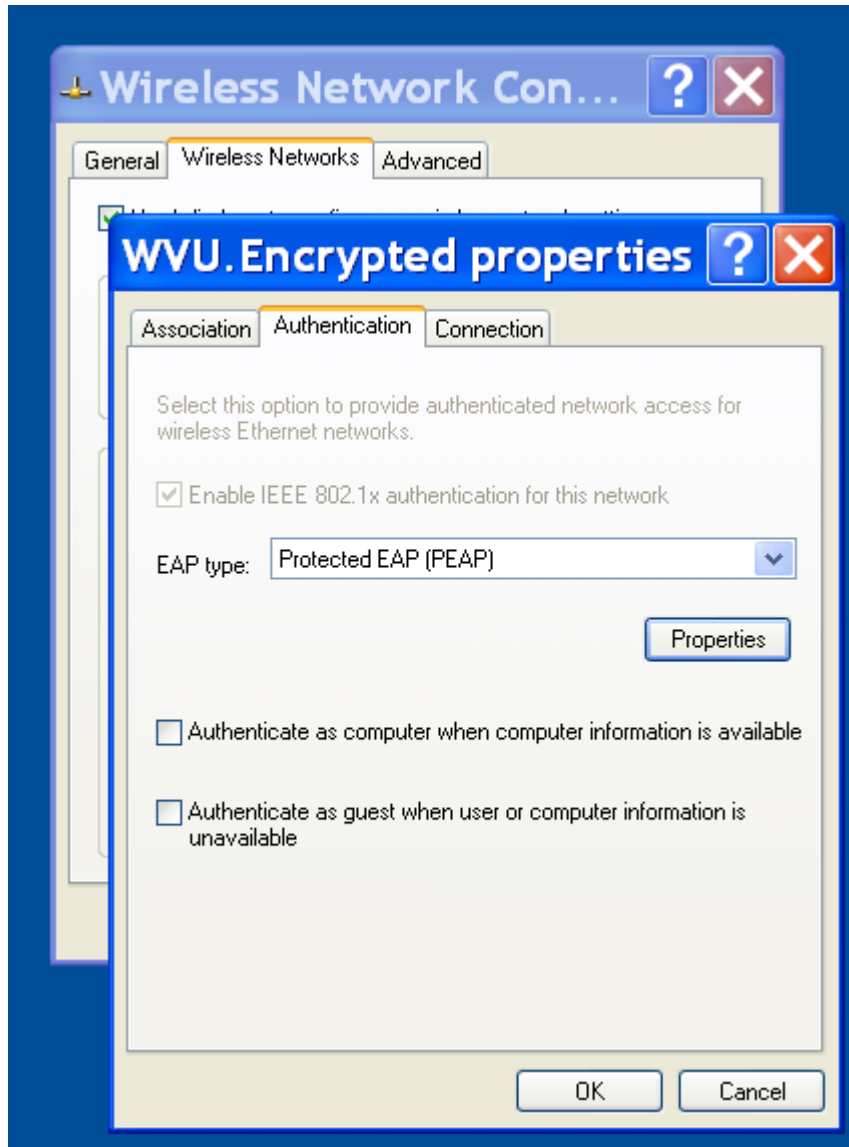
Key index (advanced): 1

The key is provided for me automatically

This is a computer-to-computer (ad hoc) network; wireless access points are not used

OK Cancel

Click to the Authentication tab. Select Protected EAP as the EAP type; make sure that "Authenticate as computer" and "Authenticate as guest" are both unchecked. Click to edit Properties.



- Make sure that "Validate server certificate" is enabled, and check the box for IPS Servidores if listed. Ensure that the authentication method is EAP-MSCHAPv2. Click to Configure Authentication Method.



Enable automatic use of Windows logon; click "OK" on all dialogs.

