

Accessing HSC Software from Charleston

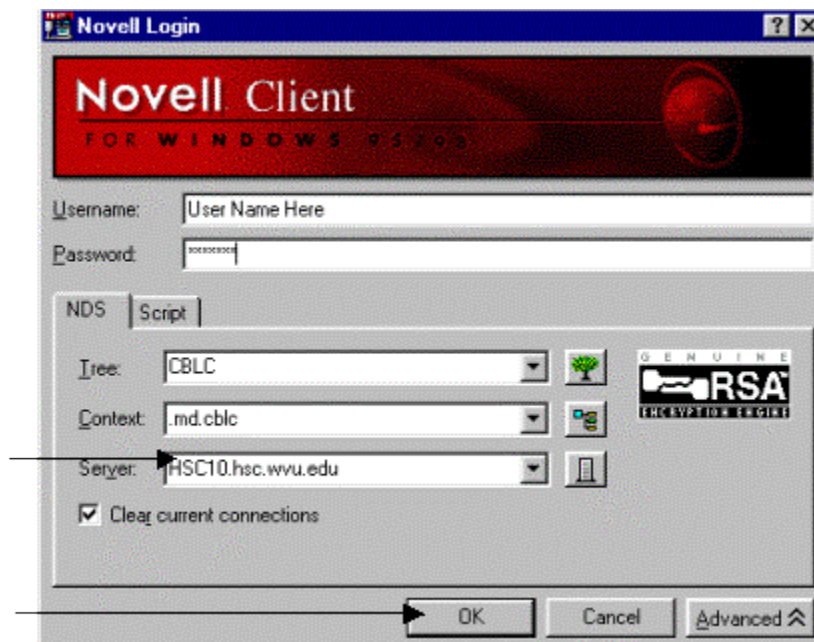
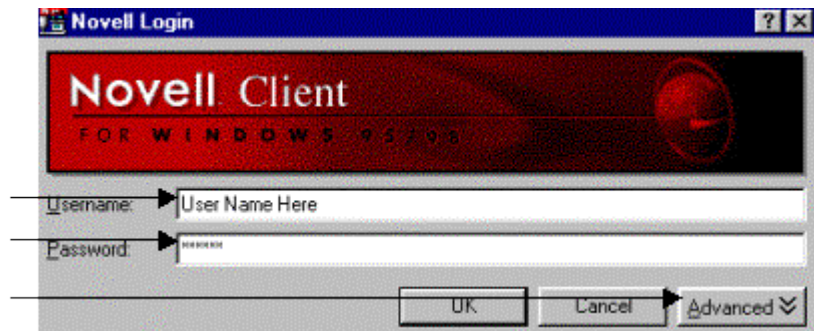
1. Connect your laptop to the student network using the PC card and network cable provided with your laptop. Power on your laptop. The Novell Login dialog box will appear.

2. Type your HSC10 user name and password. Click the **Advanced** button.

3. In the **Server** combo box, type **HSC10.hsc.wvu.edu**.

4. Choose **OK**. Choosing OK will set the server name permanently. Therefore, steps 2-4 will only have to be performed one time.

5. Please launch server applications as normal.



Logging Out

Before powering down your laptop. Please log out of the network.

1. Double click on **Network Neighborhood**.



2. Right click on **HSC10**. Select **Logout**.



3. A Novell dialog box may appear. Click **Yes** to complete the logout process.

