

Connecting to HSC Resources With the IBM ThinkPad R31



ROBERT C. BYRD
HEALTH SCIENCES CENTER
OF WEST VIRGINIA UNIVERSITY

Establishing a Connection from within the HSC

Locations to Connect:

The Health Sciences Center provides free Internet access to students at multiple locations within the HSC and the WVU Residence Halls. The HSC provides “wired” Ethernet access at all locations documented below. Additionally, “wireless” access will be available initially on the 7th and 8th floor classroom wings. In order to connect to the HSC Network, you need to be in one of the following locations.

NETWORK ACCESS POINTS

1. The Student Lounge is located on the ground floor of the north side of the HSC. Thirty-five study carrels have been connected to the HSC Computer Network, which provides direct Ethernet connectivity to the Internet and HSC resources. At each study carrel, jack #1 has been activated for your use. A HP Laser Printer is available for use within the Student Lounge.
2. The Cafeteria is located on the ground floor of the south side of the HSC. Thirty-six network access points are available on the wall adjacent to the John E. Jones Conference Center within the cafeteria. All data jacks located within the cafeteria have been connected to the HSC Computer Network, which provides direct Ethernet connectivity to the Internet and HSC resources.
3. The John E. Jones Conference Center is located on the ground floor of the south side of the HSC. Forty-eight network access points are available for use for connection to the Internet and HSC resources, of which twenty-four access points are available from within John E. Jones Rooms 1, 2, and 3 and an additional twenty-four access points are located in the foyer.
4. The CBLC is located immediately off the second floor elevators of Health Sciences South. Fifty-three Windows-based PCs and three Power Macintosh computers are available for use by students, faculty, and staff of the Health Sciences Center. All machines are connected to the HSC Computer Network, which provides direct Ethernet connectivity to the Internet. All hardware and software needed for connectivity is provided. HP Color Scanners and HP Laser Printers are available for use within the CBLC. Six network access points are available within the CBLC for use with the IBM Notebook computers.
5. The Library is located immediately off the second floor elevators of Health Sciences North. The Library provides seventeen Windows-based PCs for use by students, faculty, and staff of the Health Sciences Center. All machines are connected to the HSC Computer Network, which provides direct Ethernet connectivity to the Internet. All hardware and software needed for connectivity are provided. Five Study Rooms located within the Library provide network access points for use with the IBM Notebook computers. HP Laser Printers are available for use within the Library.
6. The Anatomy department provides network access points in Rooms 4005 and 4023 of Health Sciences North. These rooms are part of the Structural Biology Learning Center (SBLC) which primarily serves students in specific Anatomy courses. Room 4005 provides twenty Windows-based PCs loaded with specific course-related software and is often scheduled for courses. Restricted access to the 4005 lab is sometimes available to other Health Sciences Center students. Room 4023 provides one hundred network access points; it too is sometimes restricted for class use, but will be available to Health Sciences Center students during some hours. HP Laser Printers are available for use within the SBLC.
7. The 7th and 8th Floor classroom wings located in Health Sciences South provide wired and wireless network access points for students. All data jacks (wired) and wireless access have been

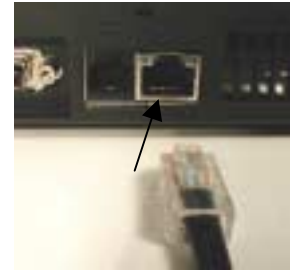
connected to the HSC Computer Network, which provides direct Ethernet connectivity to the Internet. HP Laser Printers are available for use on the 7th and 8th Floor classroom wings.

8. Classrooms 2094, 2116, 4007, and 4080 are located in Health Sciences North. Each seat within these classrooms has data and power outlets for use with your notebook computer. This connectivity provides access to the HSC Computer Network and the Internet.
9. To establish a connection in your Residence Hall room, pick up a HRLNet Network Connection brochure from your Residence Hall's Main Desk. This brochure contains an application form and general information about the HRLNet Network.

Connecting to the HSC LAN via Ethernet “Wired Connection”

Establishing a Connection to the HSC LAN via Ethernet connection (“wired connection”):

1. If your Laptop is currently turned off, simply insert your **network cable** into the Ethernet connector located in the back of the machine. Your network cable has ends that look like wide phone jacks. The connector end is used to establish a direct connection to the HSC Network and is referred to as RJ45 cable or network cable and will be used to connect to the HSC Network.
2. Connect the other end of the cable into the data jack at one of the locations mentioned on the first page of this document such as the Student Lounge, SBLC or 7th and 8th floor classrooms.
3. Turn on your Computer.
4. The **Welcome to Windows** dialog box appears, Press **Ctrl+Alt+Delete** to begin.

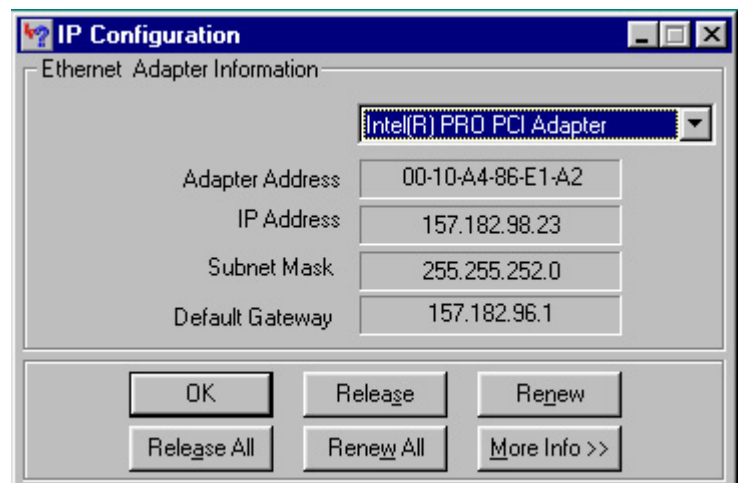


5. In the **User name** text box, type your assigned User ID, if it does not appear in the box, and in the **Password** text box, enter your password.
6. Click **OK** to log on to Windows.
7. You should now have access to the Internet, HSC Student Domain Server, and email through the HSC Network.



If your computer is currently running or for some reason a connection is not properly established. Follow these steps.

1. Click the **Start Button** in the lower left corner of the **Desktop**.
2. Click on **Run**.
3. Type "**Winipcfg**".
4. Click **OK**.
5. In the IP Configuration dialog box, in the Ethernet Adapter Information click on the down arrow and choose **Intel(R) Pro PCI Adapter**.
6. Click on the **Release All** button.
7. Click on the **Renew All** button.
8. A series of numbers should now appear in the IP address, Subnet Mask and Default Gateway boxes.
9. If you follow this procedure and numbers appear in the proper boxes then you have



established a connection to the HSC Network. Click **OK**.

If, however, you follow this procedure and numbers fail to appear in the proper boxes then you have failed to establish a connection to the HSC Network. Please contact the ISO Customer Service Center at (304) 293-3631.

Connecting to the HSC LAN via a Wireless Connection

If you are in the HSC on the 7th and 8th floor classroom wing, you will not need to use the Ethernet connection provided the wireless connection is present, but additional wireless access will be added to other parts of the building in the near future.

Establishing a Connection to the HSC LAN via Wireless connection:

1. Turn on your Computer.
2. The **Welcome to Windows** dialog box appears, Press **Ctrl+Alt+Delete** to begin.



3. In the **User name** text box, type your assigned User ID, if it does not appear in the box, and in the **Password** text box, enter your password.
4. Click **OK** to log on to Windows.



5. Click **OK**.
6. You should now have access to the Internet, HSC Student Domain Server, and email through the HSC Network.
7. To determine the strength of the wireless connection, place your cursor over the **Wireless Network Connection** located in the system tray in the lower right hand corner of the screen.



8. A balloon appears which states:
Wireless Network Connection (hsciso)
Speed 11.0 mbps
Signal Strength: Very Good



NOTE: The Signal Strength ranges from Very Good, Good, Low, Very Low to Unavailable.

9. If the signal is present and good, simply launch any network application, such as Internet Explorer, e-mail or any server-based application. If you have a signal ranging from Low to unavailable, please locate a “wired” jack to attach to the HSC Network.

