

Logon/Logoff Procedures for the HSC Web Apps Server Within the Health Sciences Center

The **HSC Web Apps Server** is accessible via Internet Explorer from within the Health Sciences Center. It is recommended that the **HSC Student Domain Server** be used within the Health Sciences Center since the Web Apps server has limited drive-mapping functionality. Additionally, not all programs are available on the HSC Web Apps Server due to incompatibility issues.

Accessing the HSC Web Apps Server within the Health Sciences Center:

1. Connect your laptop to the **Student Network**. Reference the **Connectivity Within HSC** section of this manual for more instruction on how to connect within the Health Sciences Center. Power up your laptop. When the **Windows XP Log On to Windows** screen appears, enter your assigned **HSC-Student username** and **password**.

2. Double click on the **HSC Web Apps Server icon** located on the **Desktop**.

NOTE: You may also reach the HSC Web Apps Server by launching **Internet Explorer**. Click on the **HSC Web Apps Server** button on the **Internet Explorer Link Bar** to launch the HSC Web Apps Server or type <http://webapps.hsc.wvu.edu> in the **Address Bar** and then click on the HSC Notebook Program Students click here to connect to Web Apps hyperlink.



3. The **Log On to Windows** dialog box will appear.
4. In the **User name:** section, type **your assigned user name**. In the **Password:** section, type **your assigned password**. Click the **OK** button.



5. The **HSC Web Apps Server Desktop** will appear.

NOTE: The **HSC Web Apps Server** has its own Start button and Taskbar. To toggle between the HSC Web Apps Server and the Windows XP main screen press **Ctrl + Alt + Pause**, then minimize the Internet Explorer screen by clicking the Minimize button in the upper right-hand corner of the window.



To Access the Reference Software on the HSC Web Apps Server:

1. Double click on the **HSC Software** icon, located on the **HSC Web Apps Server Desktop**.
2. Double click the desired program icon to launch the program.

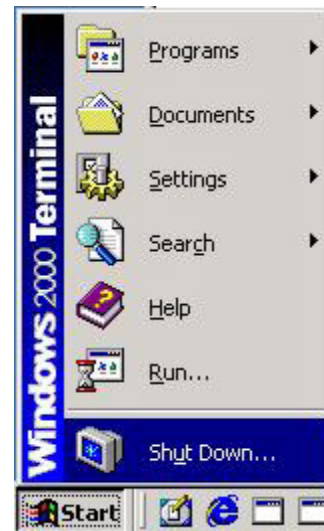


-OR-

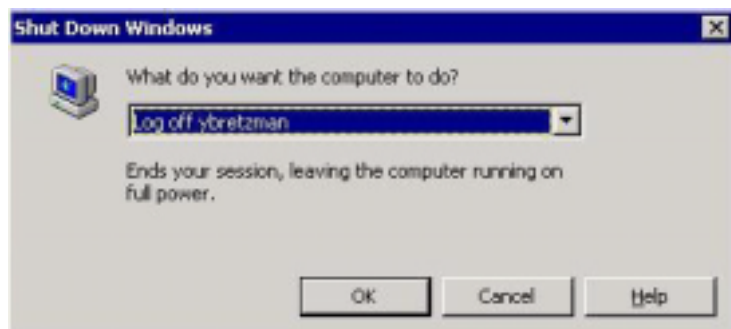
1. Click on the **HSC Web Apps Server Desktop Start Button** and select **Programs**.
2. Choose **HSC Software** and select the desired program.

Logging Off of the HSC Web Apps Server

1. Click the **Start** button in the **HSC Web Apps Server** window and choose **Shut Down**.



2. Select **OK** to end your session.



3. The Windows Terminal Services Web Connection page launches. Select **File** and then **Close** from the Menu to close Internet Explorer.

