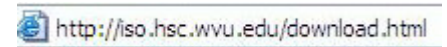


Installing the Virtual Network Computing Server onto an R-31 IBM Thinkpad

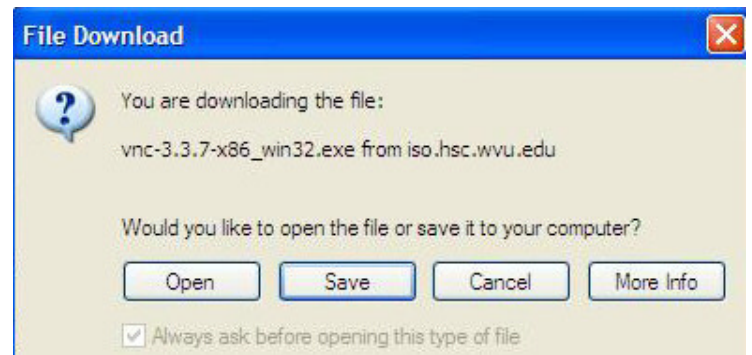
1. Turn on your computer.
2. Log on to the student network using your assigned user name and password.
3. Launch **Internet Explorer**.
4. In the **Address** box, type **http://iso.hsc.wvu.edu/download.html**



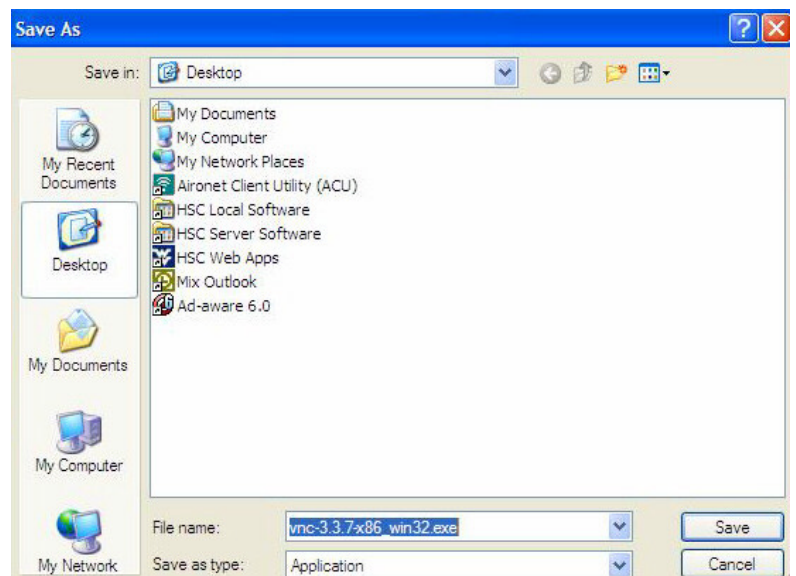
5. Scroll down the page to the **Miscellaneous** section and click on the **Virtual Network Computing** hyperlink.



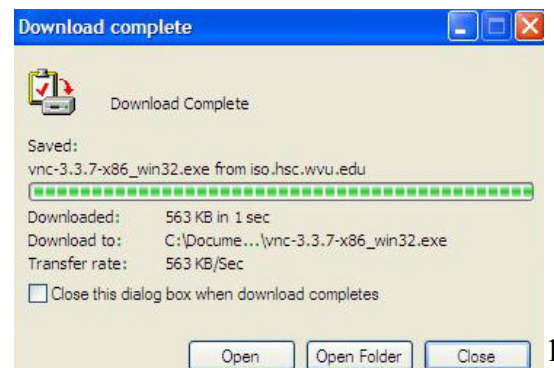
6. Choose **Save**.



7. Select the **Desktop** button and then choose **Save**.



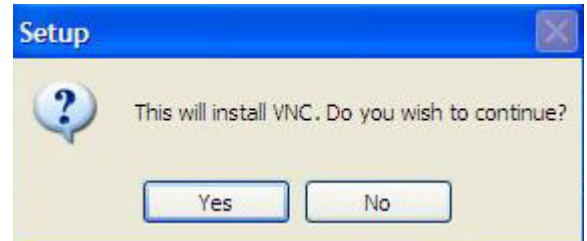
8. When the download is complete, if the dialog box does not automatically disappear, click **Close**.
9. Close **Internet Explorer**.



10. Double click on the **vnc-3.3.7-x** icon on the **Desktop** to begin the installation.



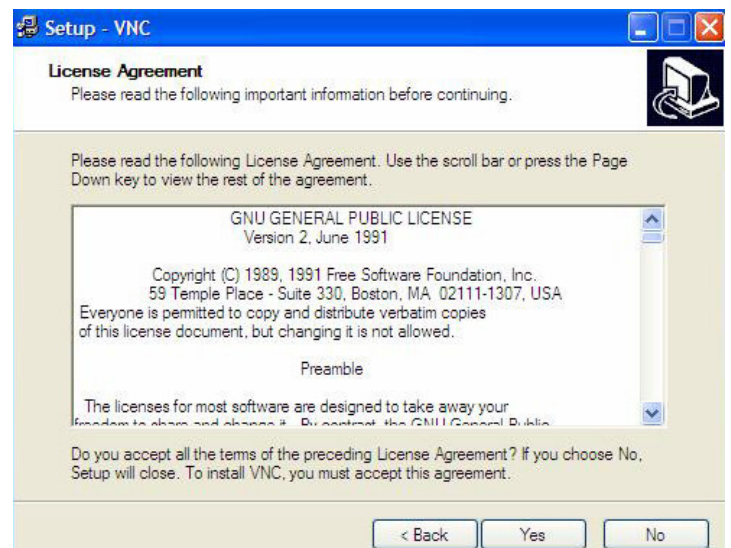
11. Choose **Yes**.



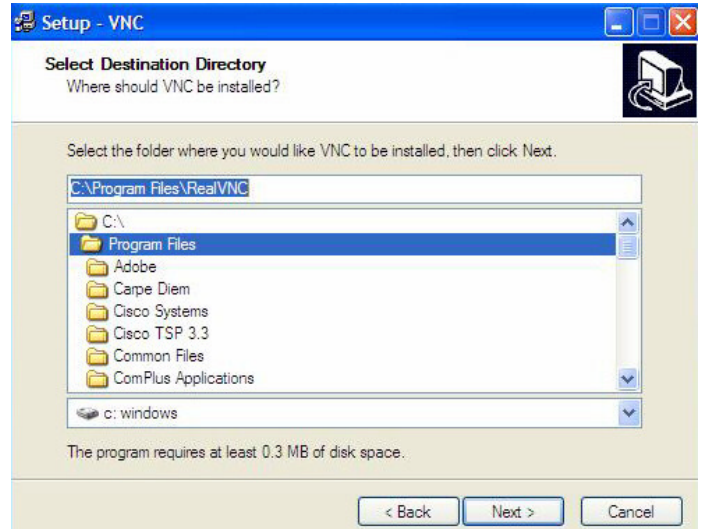
12. The VNC Setup Wizard launches. Click **Next**.



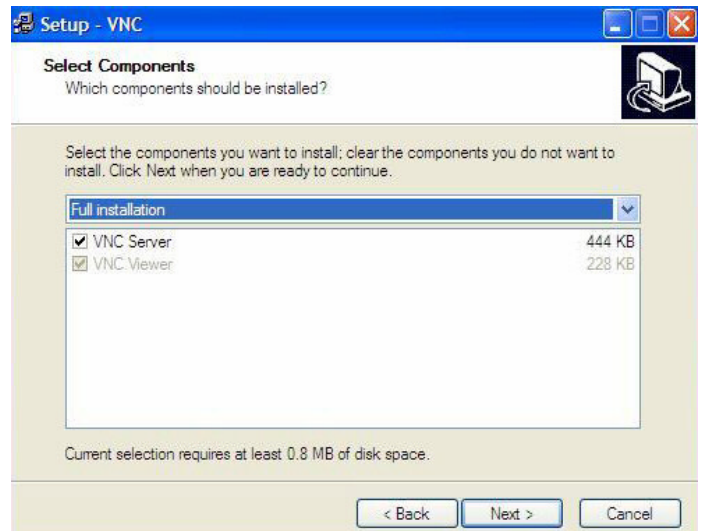
13. Select **Yes** to agree.



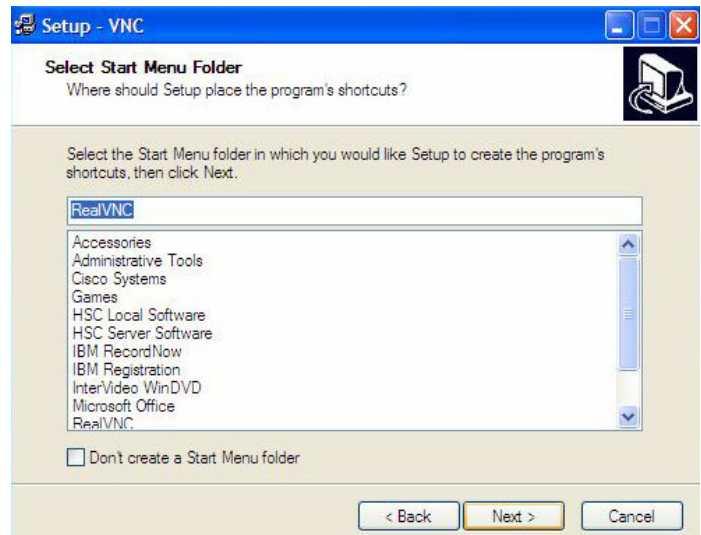
14. Choose **Next**.



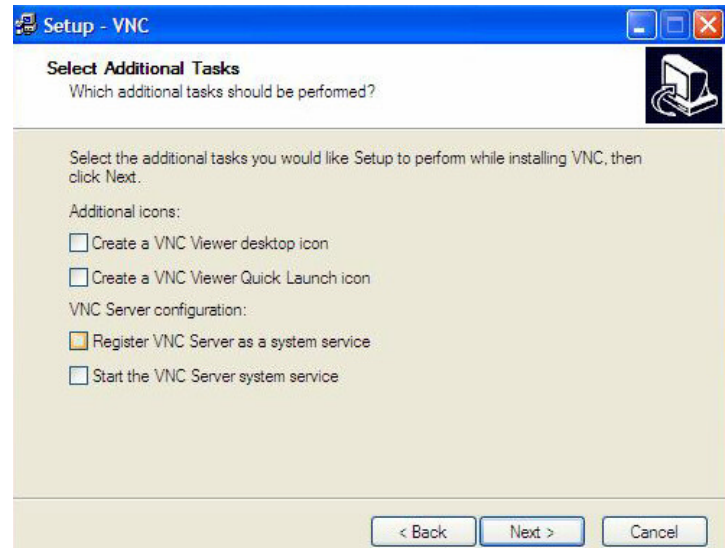
15. Confirm that both options are checked. Click **Next**.



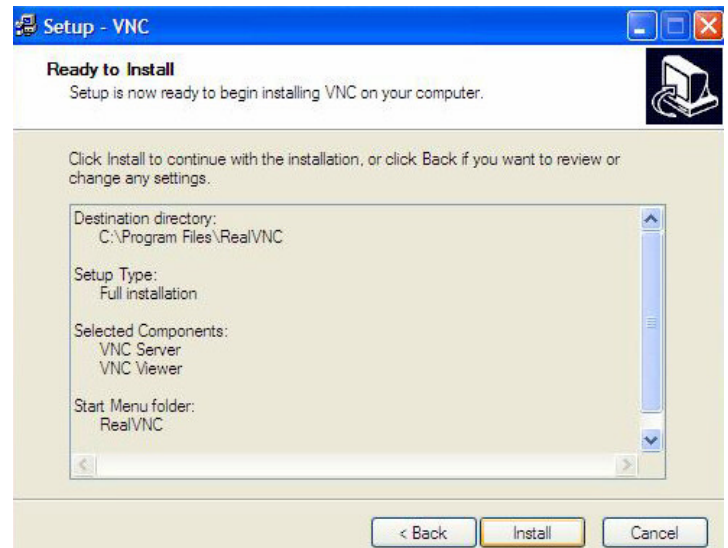
16. Choose **Next** again.



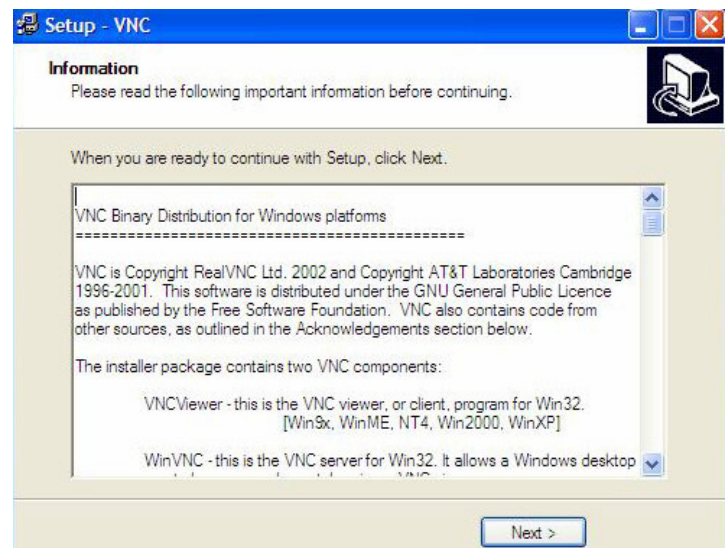
17. **Do Not** check any of the options. If any items are selected, please uncheck selected items. Choose **Next**.



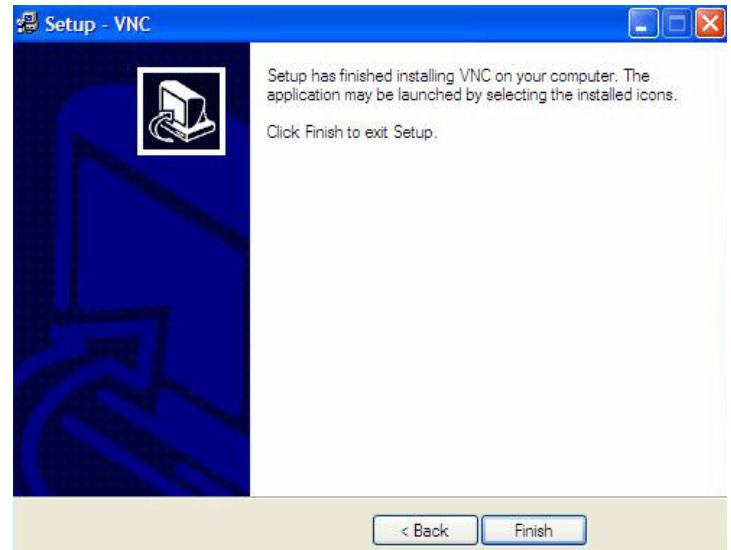
18. Click **Install**.



19. Choose **Next**.



20. Select **Finish**.



Using the Virtual Network Computing Server

VNC software is a remote control program which allows a user to view and interact with another computer that is running the VNC Server software. This software will be used in your ALE's (Active Learning Exercises) groups where one student's laptop will be functioning as the VNC Server and the remaining students in the group will use the VNC Viewer to view the display of the laptop running the VNC Server.

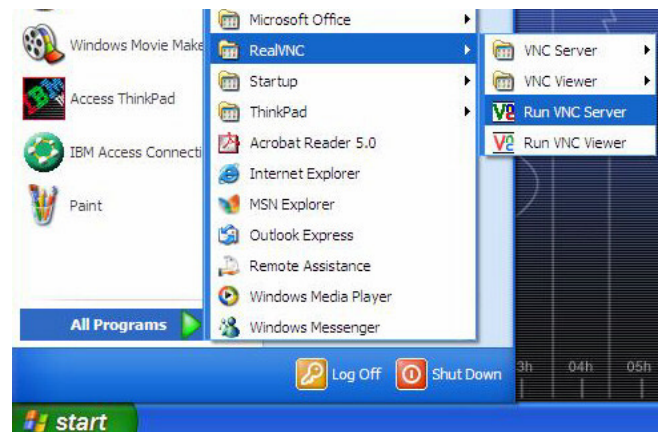
Important when setting up your laptop to function as the VNC Server:

When your laptop will be functioning as the VNC Server for the group, it is critical you create an incoming connections password and select the connection setting "Disable Remote Keyboard & Pointer" to avoid security issues. See documentation below on how to properly set these parameters while establishing your laptop as a VNC Server. If you have any questions about using this software to establish your laptop as a VNC Server, please contact the Help Desk at 293-3631.

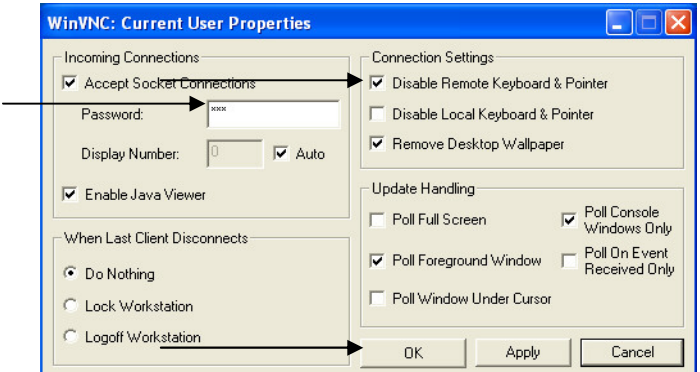
If you are using a personal firewall, you may need to temporarily disable this feature when your laptop is functioning as the VNC server. For questions regarding firewalls, please contact the Help Desk at 293-3631.

Connecting to the VNC Server

1. Turn on your computer.
2. Log on to the student network using your assigned user name and password.
3. Click on the **Start** button and go to **All Programs**, **Real VNC**, and then **Run VNC Server**.



- IMPORTANT SECURITY SETTING:**
Type your **VNC Server Password** in the **Password** box. If this screen doesn't open on program launch, double click the VNC icon located in the system tray.
- Click in the **Disable Remote Keyboard & Pointer** checkbox.
- Choose the **OK** button.



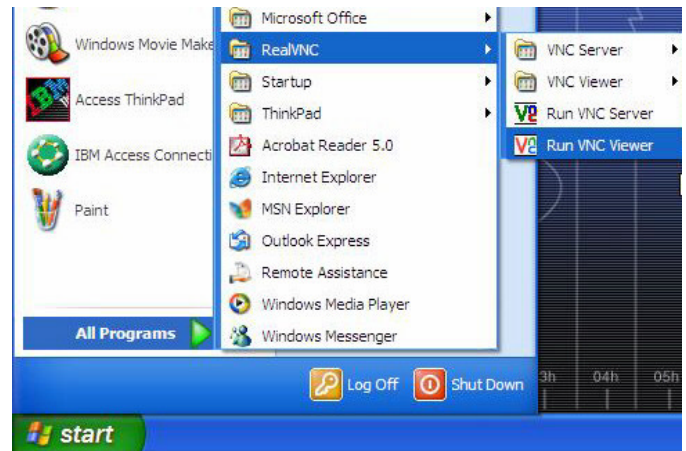
- The VNC icon will appear in the **System Tray** located in the lower right corner of your screen. Position your **pointer** directly over the **VNC icon**, and make note of the **WinVNC (IP Address)** that will appear above the icon. This number will be given to your students, so that they may log on using the VNC Viewer.
- Have your students log on to their laptops using the **VNC Viewer**.
- Continue with your lesson.
- To log off of the VNC Server, **right click** on the **VNC icon** in the **System Tray** and choose **Close** from the pop-up menu.



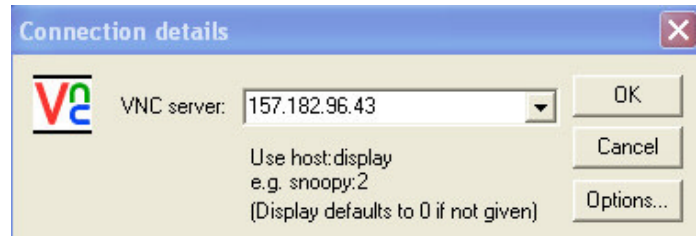
Launching the VNC Viewer

The VNC Viewer is required to connect to a computer running the VNC Server software. You will use the VNC Viewer software in your ALE's (Active Learning Exercises) group when you need to view the display from another computer that is setup as a VNC Server. If you have questions about using this software, please contact the Help Desk at 293-3631.

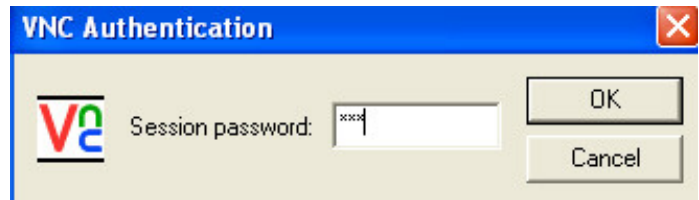
- Turn on your computer.
- Log on to the student network using your assigned user name and password.
- Click on the **Start** button and go to **All Programs**, **Real VNC**, and then **Run VNC Viewer**.



- Type the **IP Address**, that your instructor will give you, into the **VNC server** box and click **OK**.
- Your mouse pointer will turn into a black dot and your screen will display exactly what is on your instructor's machine.



- Enter you assigned **Session password**.
- Click **OK**.



- Choose **OK**.



- In order to close the **VNC Viewer**, hold down the **Ctrl** key on your keyboard and press the **Esc** key (**Ctrl+Esc**). This will make the **Taskbar** reappear.
- Right click** on the **VNC button** in the **Task Bar**.
- Choose **Close** from the pop-up menu.

