

Establishing a Connection Via Remote Access Using the HSC Web Apps Server

Attaching the Phone Cable:

1. If your Laptop is currently running, turn off your machine.
2. Locate your phone cable.
3. Slide one end of the cable into the modem port located in the rear of your notebook. Attach the other end of the cable to the phone line.
4. Turn on your computer.



Connecting to the HSC Web Apps Server via WVNET:

1. Establish a dial-up session via **WVNET**. Please reference **Establishing a Connection via Remote Access using WVNET** in the **Connectivity Dial-up** section of this manual for more information on connecting to **WVNET**.

1. Double click on the **HSC Web Apps Server icon** located on the **Desktop**.

NOTE: You may also reach the HSC Web Apps Server by launching **Internet Explorer**. Click on the **HSC Web Apps Server** button on the **Internet Explorer Link Bar** to launch the HSC Web Apps Server or type <http://webapps.hsc.wvu.edu> in the **Address Bar** and then click on the HSC Notebook Program Students click here to connect to Web Apps hyperlink.



2. The **Log On to Windows** dialog box will appear.
3. In the **User name:** section, type **your assigned user name**. In the **Password:** section, type **your assigned password**. Click the **OK** button.



4. The **HSC Web Apps Server Desktop** will appear.

NOTE: The **HSC Web Apps Server** has its own Start button and Taskbar. To toggle between the HSC Web Apps Server and the Windows XP main screen press **Ctrl + Alt + Pause**, then minimize the Internet Explorer screen by clicking the Minimize button in the upper right-hand corner of the window.



To Access the Reference Software on the HSC Web Apps Server:

1. Double click on the **HSC Software** icon, located on the **HSC Web Apps Server Desktop**.
2. Double click the desired program icon to launch the program.

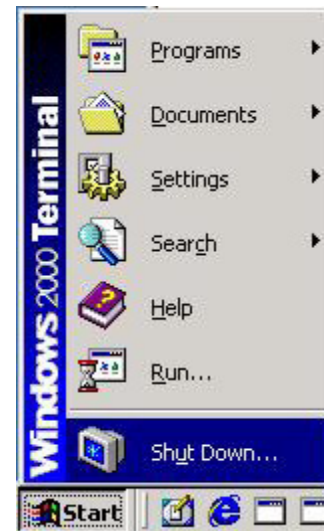


-OR-

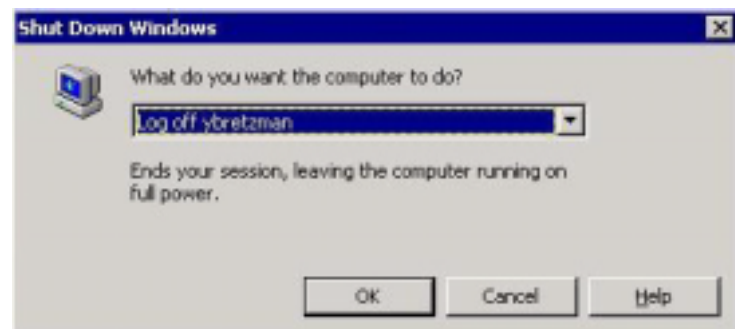
1. Click on the **HSC Web Apps Server Desktop Start Button** and select **Programs**.
2. Choose **HSC Software** and select the desired program.

Logging Off of the HSC Web Apps Server

1. Click the **Start** button in the **HSC Web Apps Server** window and choose **Shut Down**.



2. Select **OK** to end your session.



The Windows Terminal Services Web Connection page launches. Select **File** and then **Close** from the Menu to close Internet Explorer.

