

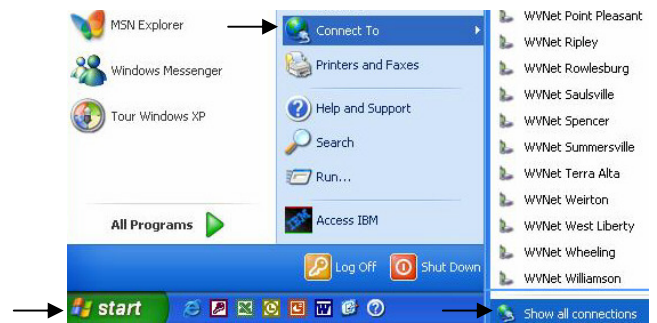
Establishing a Firewall on the R31 and R40 IBM Thinkpads

A firewall is a system intended to prevent unauthorized access to or from a private network. They are frequently used to prevent unauthorized Internet users from accessing private networks connected to the Internet, or in particular Intranets.

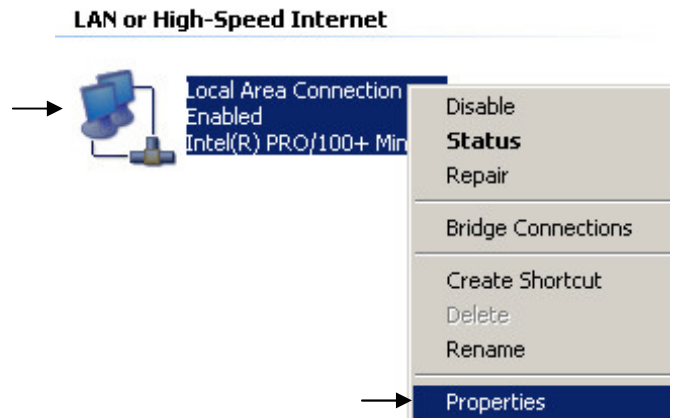
This documentation is to help the student laptop users firewall their computer, in order to help protect the information on those computers.

NOTE: If the firewall is activated on a laptop, then other users will not be able to access shared folders or files. It is recommended that users do not share files or folders from their laptops.

1. Turn on the laptop and log in using the assigned **Username and Password**.
2. Choose **Start, Connect To, and Show All Connections**.



3. **Right** click on **Local Area Connection**.
4. Choose **Properties**.



5. Select the **Advanced** tab.
6. Click in the **check box** for **Protect my computer and network by limiting or preventing access to this computer from the Internet**.
7. Choose **OK**.

