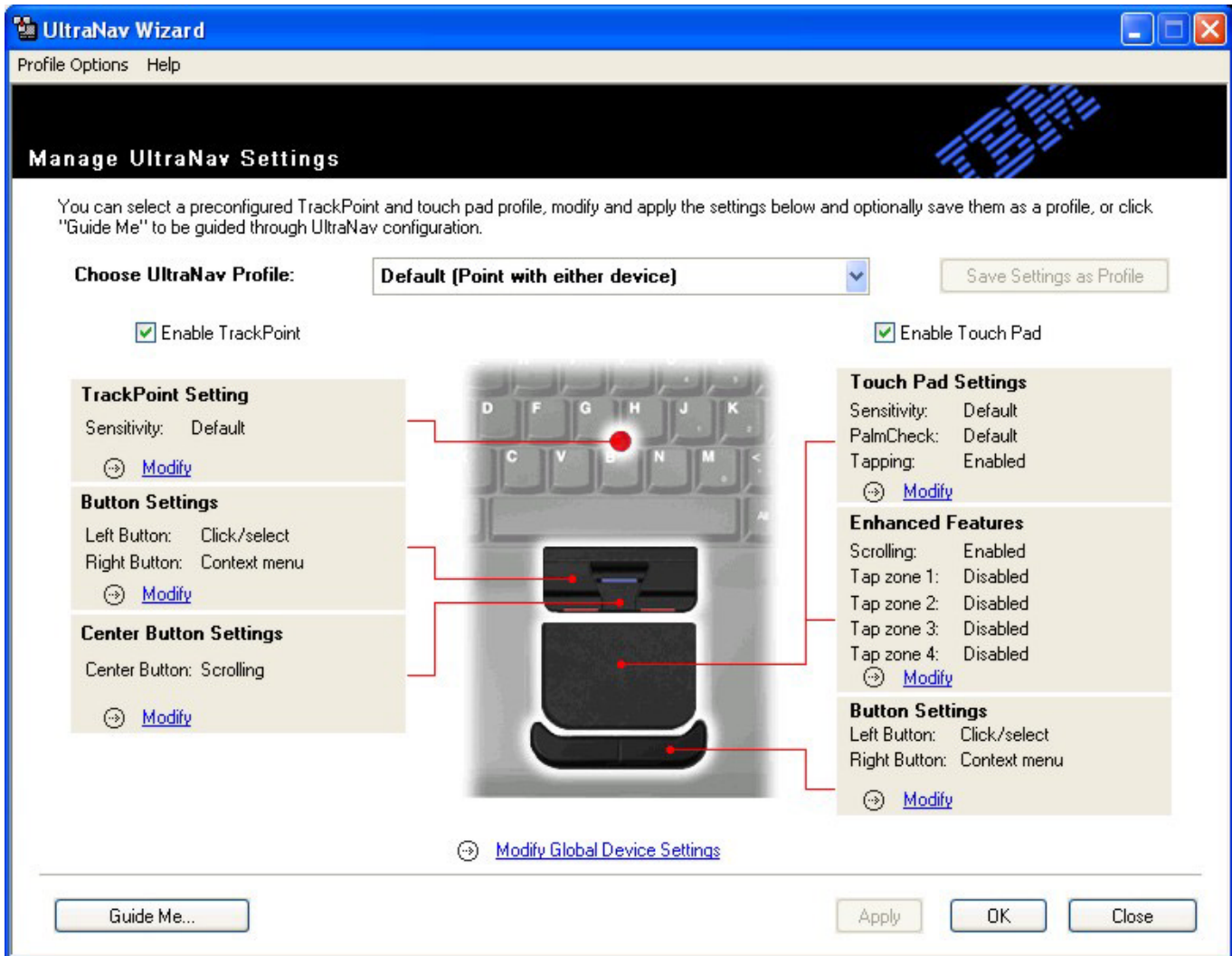


Using the UltraNav Wizard to Set Preferences for the TouchPoint and Touch Pad on the T41 Laptop

1. Turn on the computer and logon using your assigned **Username** and **Password**.
2. Click once on the **UltraNav** icon, located in the System Tray on the lower right corner of the desktop.
3. Select **Launch UltraNav Wizard**.
4. The wizard launches and shows the following window.



5. From this window, you can choose the desired pointing devices and modify the settings on those devices. The **TrackPoint** is the flat red circle in the center of the keyboard. The **Touch Pad** is the sunken smooth surface area below the keyboard. See the **Description of Options** section for more information on each of the options.
6. Click **Close** when you are finished personalizing your settings.

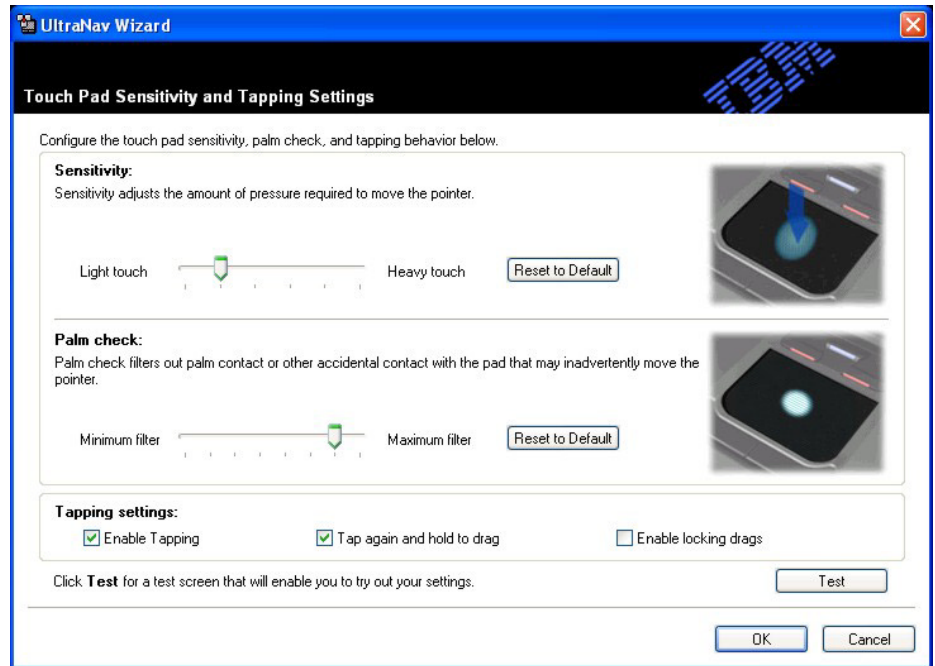
Description of Options

Touch Pad

The options under **Enable Touch Pad** allow you to modify the options for the Touch Pad. Select **Modify** to change the options for each setting.

Touch Pad Settings

- **Sensitivity** adjusts the amount of pressure required to move the pointer. Increased sensitivity makes the Touch Pad more responsive to your touch. Decreased sensitivity makes the Touch Pad less responsive to accidental touches and taps that can cause unwanted mouse movement. To change the sensitivity, click and drag the **slide bar pointer** to the left to decrease the sensitivity or the right to increase the sensitivity.
- **Palm Check** filters out accidental contact that may accidentally move the pointer. Maximum filter makes the Touch Pad least responsive to accidental cursor movement.
- **Tapping Settings** allows tapping to be turned off and on. A light, quick tap works best; very slow taps or very hard taps are less effective. Tap once for a single click, tap twice in rapid succession for a double-click.
- **Enable Tapping** allows this feature to be turned on and off. If this option is deselected, only the buttons may be used for clicking.
- **Tap again and hold to drag** allows objects to be dragged without using the Touch Pad buttons. Move the selected object by sliding your finger across the Touch Pad surface and lift your finger to drop the object.

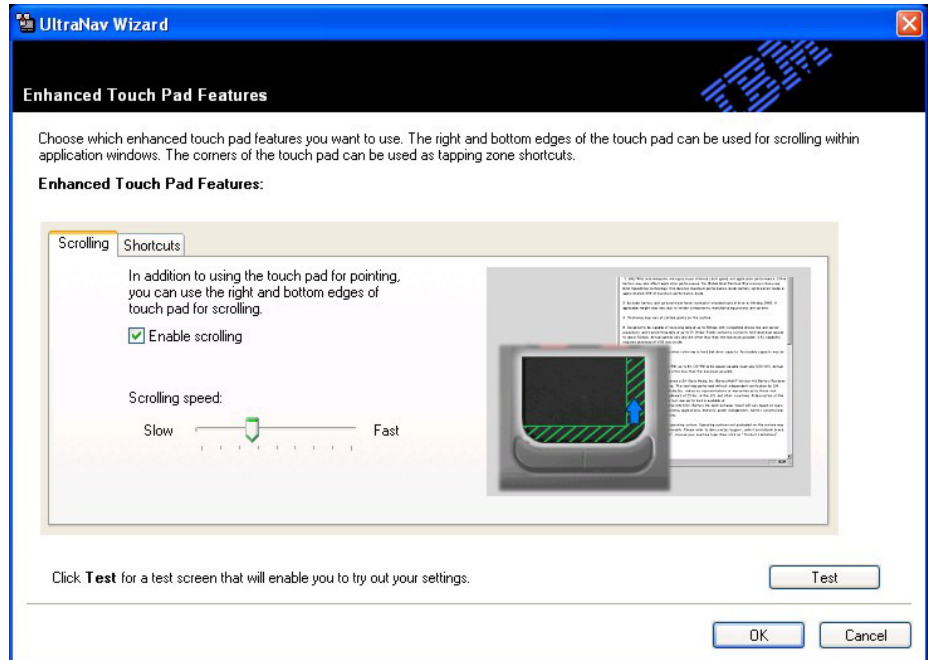


Enhanced Features

Scrolling

Scrolling allows you to use the Touch Pad to scroll through windows.

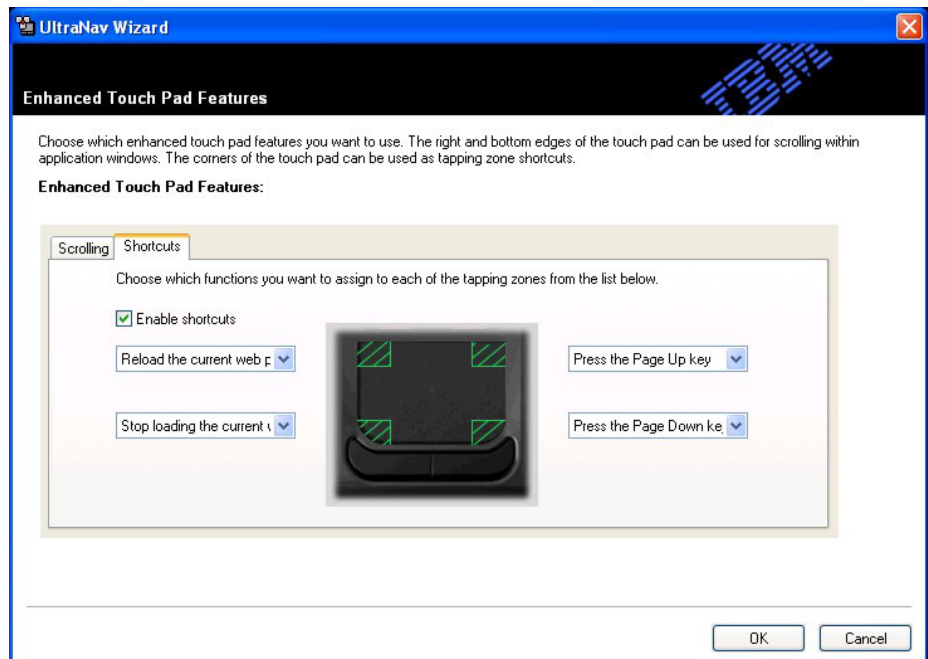
- **Enable scrolling** turns the feature on and off.
- **Scrolling speed** controls how quickly contents move through the window.



Shortcuts

Shortcuts allow the corners of the Touch Pad surface to be configured as a different buttons when those areas are tapped. These corner regions are called **Tap Zones**.

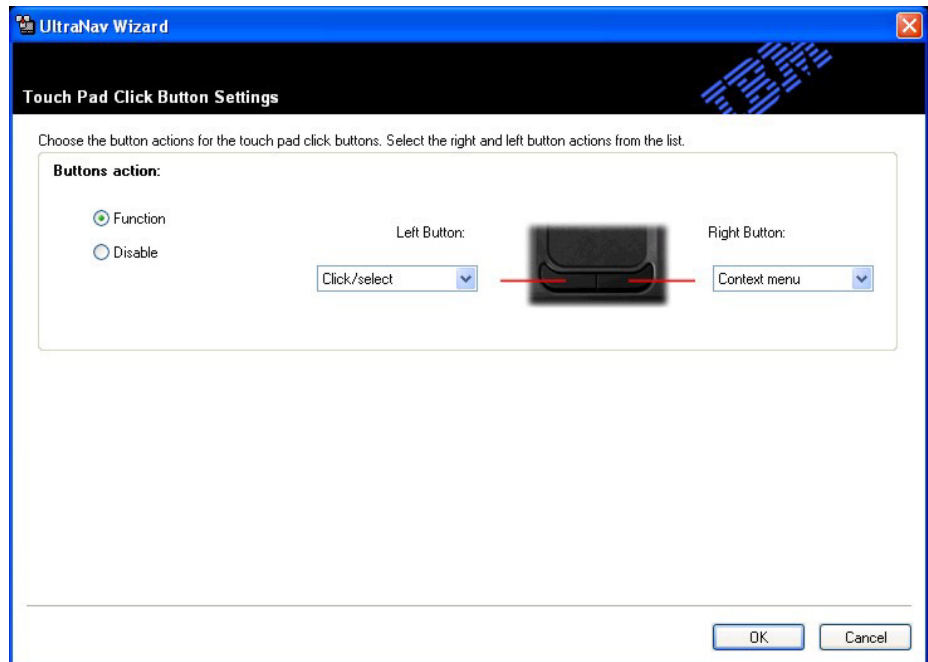
- **Enable shortcuts** turns the shortcuts on and off.
- The drop down arrow next to each marked corner allows a specific task to be assigned to each zone.



Button Settings

Button settings allow the Touch Pad buttons to be enabled or disabled, and allow the left and right buttons to be assigned certain tasks.

- **Button action** allows you to specify the function for the buttons or to disable the buttons.
- The drop down arrows beneath **Left Button** and **Right Button** allow a specific task to be set for that button.



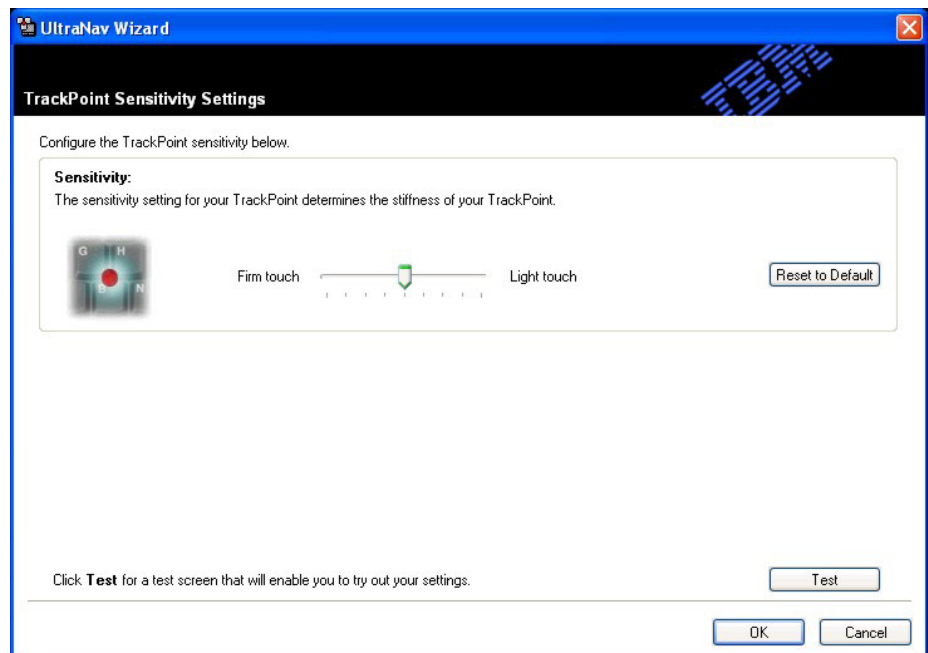
TrackPoint

The TrackPoint settings allow you to modify the options for the TrackPoint. Select **Modify** to change the options for each setting

TrackPoint Settings

The options under TrackPoint Settings control the stiffness of the TrackPoint to be configured.

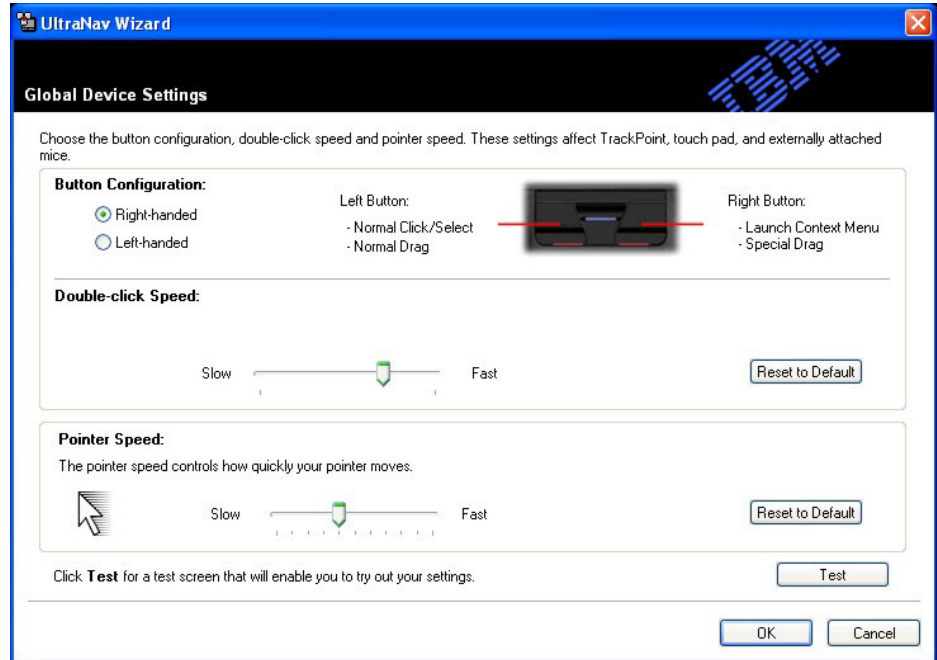
- **Sensitivity** changes how sensitive the TrackPoint is to a touch. Dragging the slider bar to the left towards Firm touch give the TrackPoint more resistance to touch, dragging the slider bar towards the right towards Light touch makes the TrackPoint more pliant to touch.



Button Settings

Button settings allow the TrackPoint buttons to be enabled or disabled, allow the left and right buttons to be assigned certain tasks, and sets pointer and double-clicking speed.

- **Button Configuration** allows the TrackPoint buttons to be configured for either left hand or right hand use.
- **Double-click Speed** sets the speed at which you must double click to launch a program. To change the speed, click and drag the slider bar to the left to decrease the speed, drag the bar to the right to increase the speed.
- **Pointer Speed** controls how quickly the pointer moves. To change the speed, click and drag the slider bar to the left to decrease the speed, drag the bar to the right to make the pointer move more quickly.



Center Button Settings

A function can be assigned to the TrackPoint center button.

- **Scrolling** scrolls through any active window without having to use the scroll bars when the center button is held down and the TrackPoint ball is moved.
- **Magnifying Glass** magnifies the portion of the screen around the pointer, when the center button is held down.
- **Neither** allows the center button to be used as a standard middle mouse button.

