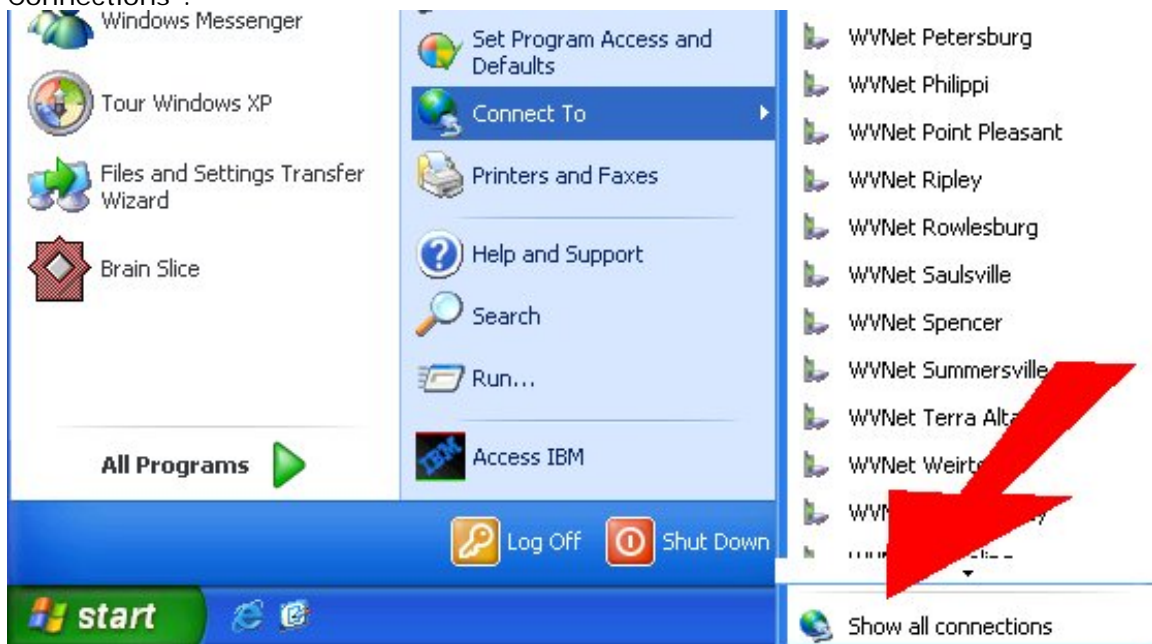


T41, T42, & T43 Users

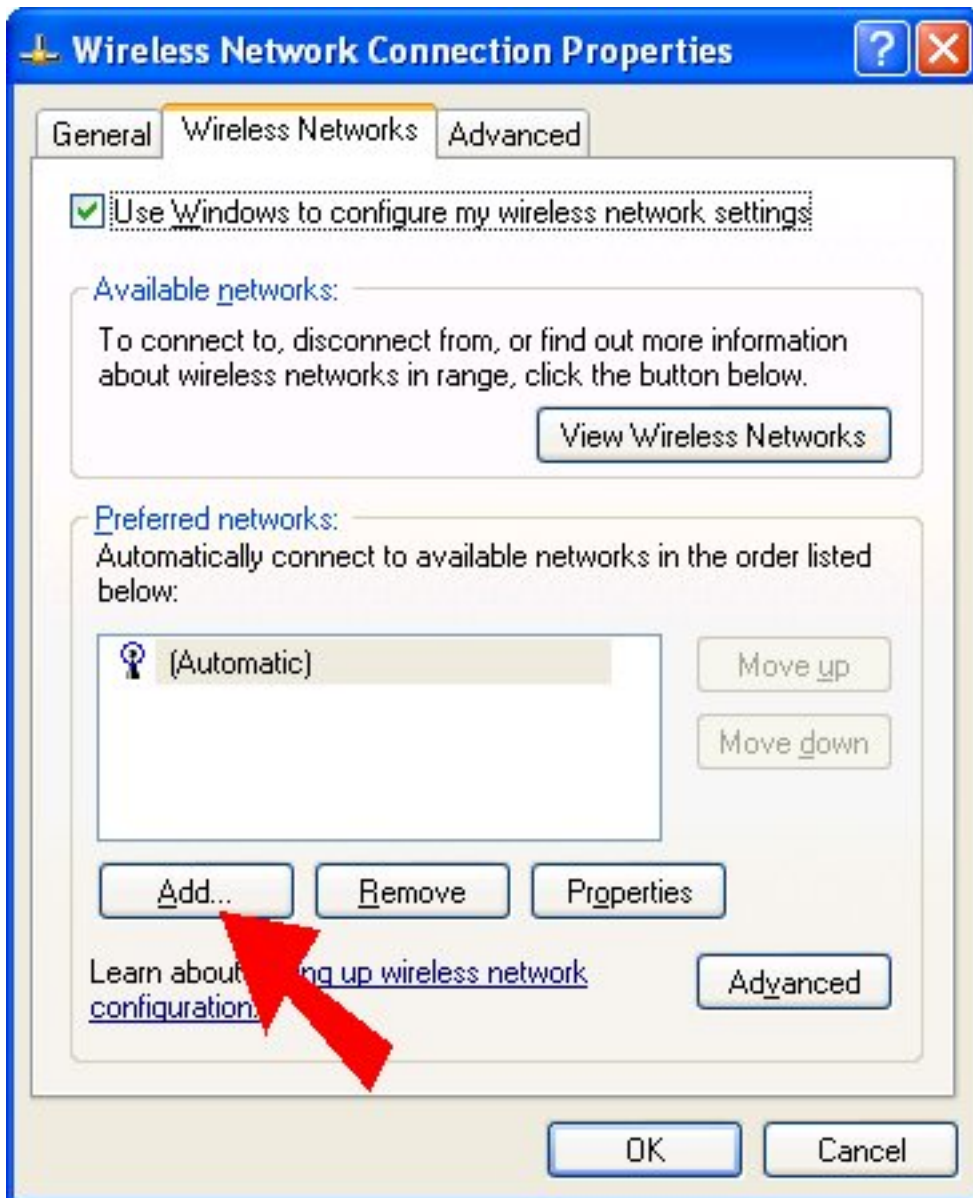
Press your "Start button", click on "Connect to", and then click on "Show All Connections".



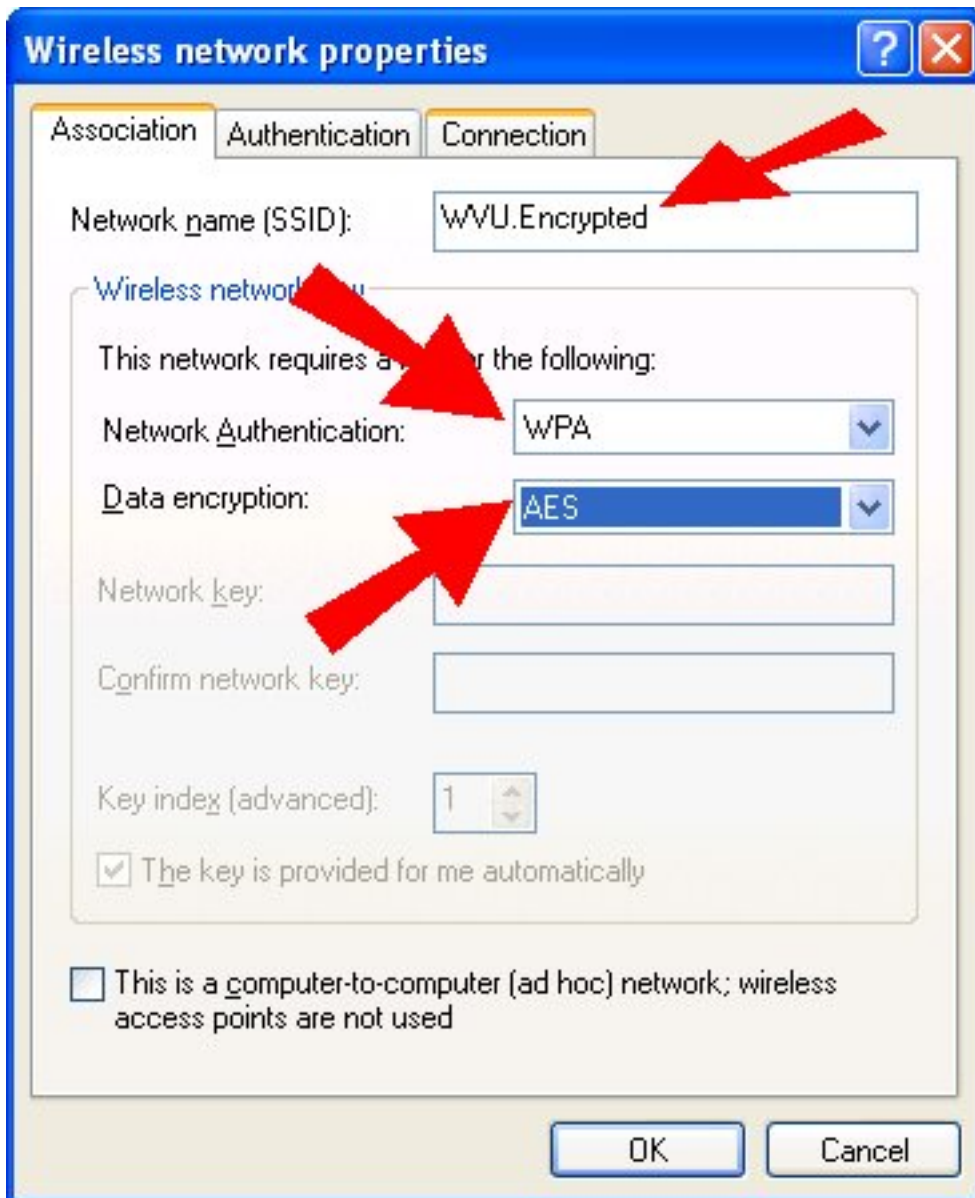
Find the connection named "Wireless Network Connection" and use your second mouse button to right-click on it and then click on "Properties".



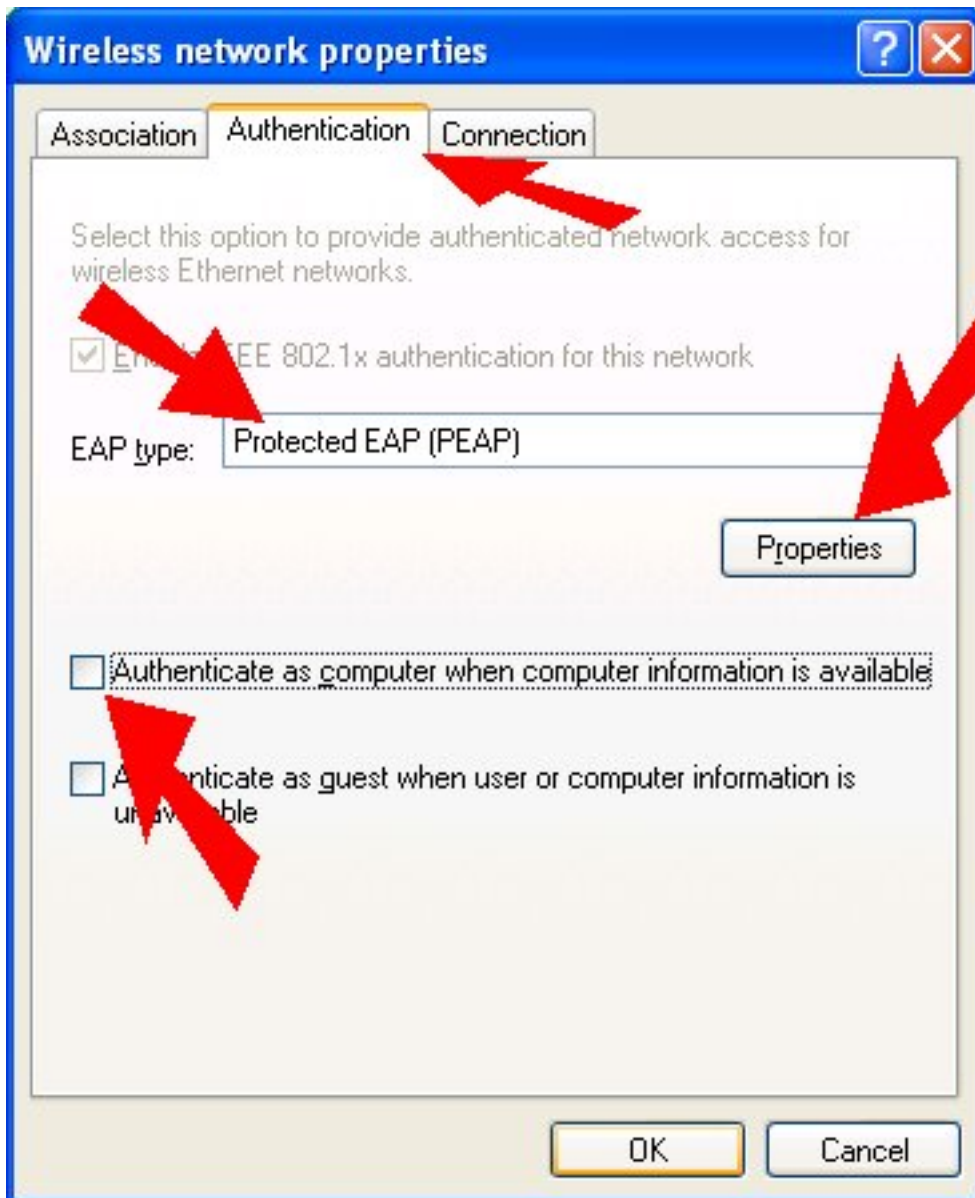
At the top, Click to the Wireless Networks tab of the adapter properties window, and verify that "Use Windows to configure my wireless settings" is selected. Click to Add a new preferred network.



Enter WVU.Encrypted as the SSID. Select WPA authentication and AES encryption.



Click to the Authentication tab. Select Protected EAP as the EAP type; make sure that "Authenticate as computer" and "Authenticate as guest" are both unchecked. Click to edit Properties. If "AES" is not an option, please contact the HSC Helpdesk for Windows Updates to be installed.



Make sure that "Validate server certificate" is enabled, and check the box for IPS Servidores if listed. Ensure that the authentication method is EAP-MSCHAPv2. Click to Configure Authentication Method.



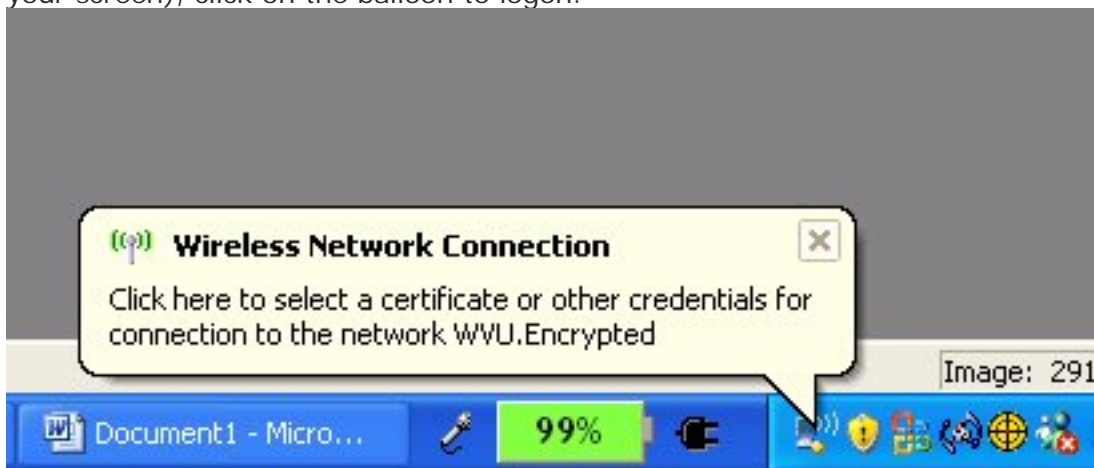
Disable automatic use of Windows logon; click "OK" on all dialogs.



Press the OK button 4 times and close out the Network Connections Windows to return to your desktop.

Logging in

Once your settings are configured, visit any WVU wireless hotspot and enable your wireless adapter. You should see a login popup appear requesting your credentials. Once this "balloon" appears in your system tray (at the bottom right hand side of your screen), click on the balloon to login.



Enter your username (the part of your MIX email address before the "@"), your WVU-AD password, and leave the "Domain" field blank. Press the "OK" button. If you don't know your WVU-AD password contact the Helpdesk to get it reset.

Enter Credentials ✕



User name:

Password:

Logon domain:

If prompted to accept certificates, accept the IP Servidores root and intermediate certificates, and server certificates from WVU.EDU.



Once connected you should see this balloon popup in your system tray.



Contact the Helpdesk if you have any problems or need assistance at 293-3631 or hsc_helpdesk@hsc.wvu.edu.