

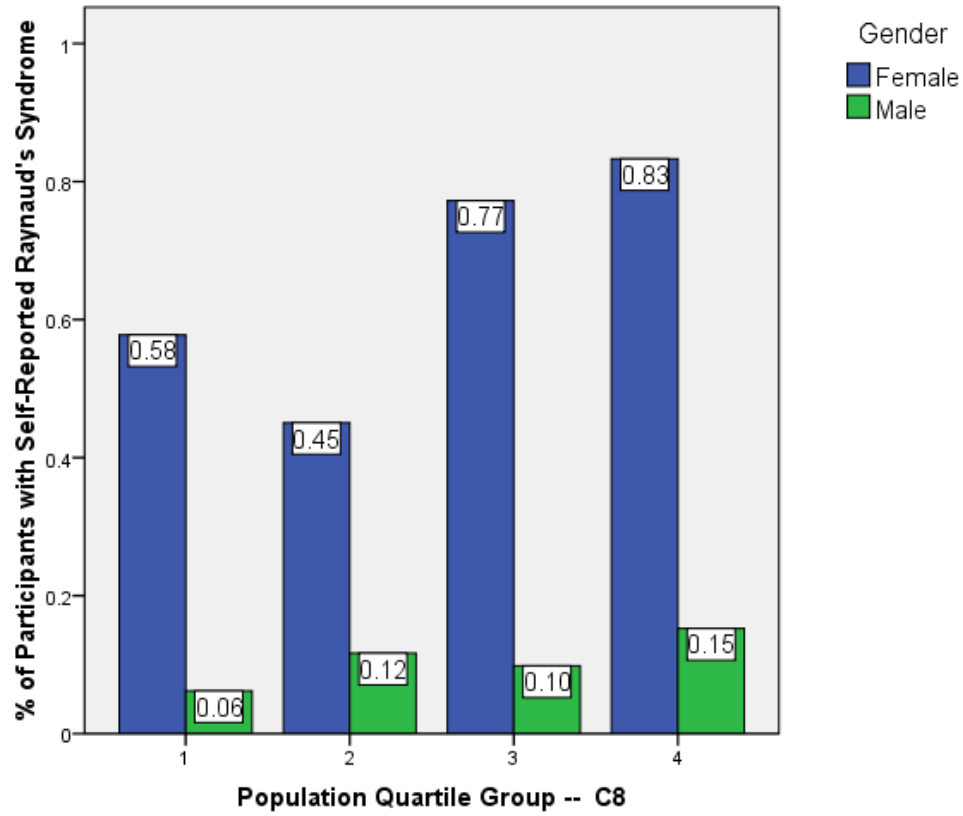
Self-Reported Raynaud's Syndrome and C8/PFOA

Adults (>=18YO) Only

NOTE: All results reported here are based on information as reported by participants and were not independently verified. The association between self-reported Raynaud's Syndrome and C8/PFOA is unadjusted for any potential confounders or covariates. Caution in interpretation is warranted.

				Self-Reported Raynaud's Syndrome		
				No/No Response	Yes	Total
Female	Quartile Group -- C8	1	Count	9119	53	9172
			% within Quartile Group -- C8	99.4%	.6%	100.0%
			% within Self-Reported Raynaud's Syndrome	31.1%	27.9%	31.1%
		2	Count	7289	33	7322
			% within Quartile Group -- C8	99.5%	.5%	100.0%
			% within Self-Reported Raynaud's Syndrome	24.9%	17.4%	24.8%
		3	Count	6680	52	6732
			% within Quartile Group -- C8	99.2%	.8%	100.0%
			% within Self-Reported Raynaud's Syndrome	22.8%	27.4%	22.8%
		4	Count	6190	52	6242
			% within Quartile Group -- C8	99.2%	.8%	100.0%
			% within Self-Reported Raynaud's Syndrome	21.1%	27.4%	21.2%
		Total	Count	29278	190	29468
			% within Quartile Group -- C8	99.4%	.6%	100.0%
% within Self-Reported Raynaud's Syndrome	100.0%		100.0%	100.0%		
Male	Quartile Group -- C8	1	Count	4839	3	4842
			% within Quartile Group -- C8	99.9%	.1%	100.0%
			% within Self-Reported Raynaud's Syndrome	18.1%	10.0%	18.1%
		2	Count	6853	8	6861
			% within Quartile Group -- C8	99.9%	.1%	100.0%
			% within Self-Reported Raynaud's Syndrome	25.7%	26.7%	25.7%
		3	Count	7121	7	7128
			% within Quartile Group -- C8	99.9%	.1%	100.0%
			% within Self-Reported Raynaud's Syndrome	26.7%	23.3%	26.7%
		4	Count	7864	12	7876
			% within Quartile Group -- C8	99.8%	.2%	100.0%
			% within Self-Reported Raynaud's Syndrome	29.5%	40.0%	29.5%
		Total	Count	26677	30	26707
			% within Quartile Group -- C8	99.9%	.1%	100.0%
% within Self-Reported Raynaud's Syndrome	100.0%		100.0%	100.0%		

Participants with Self-Reported Raynaud's Syndrome within C8/PFOA Population Quartile Group



C8/PFOA for Participants Stratified by Self-Reported Raynaud's Syndrome

