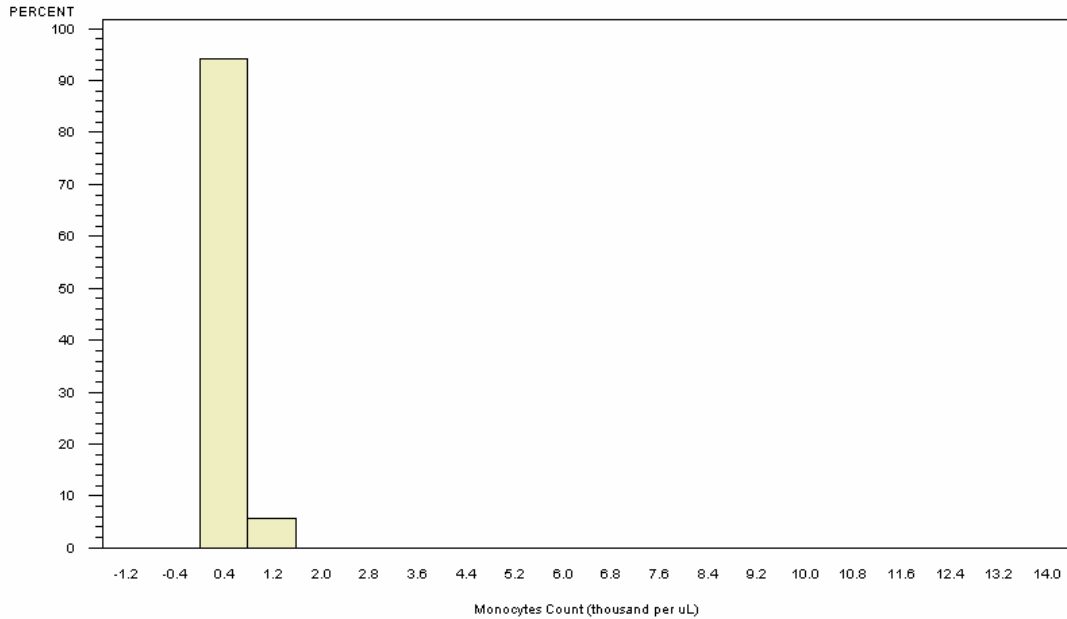


# Summary Results for Absolute Monocyte Levels for All Participants

## MONOCYTES (ABSOLUTE) IN ALL SUBJECTS

PARTICIPANTS=65878, MEAN=0.46, STANDARD DEVIATION=0.18

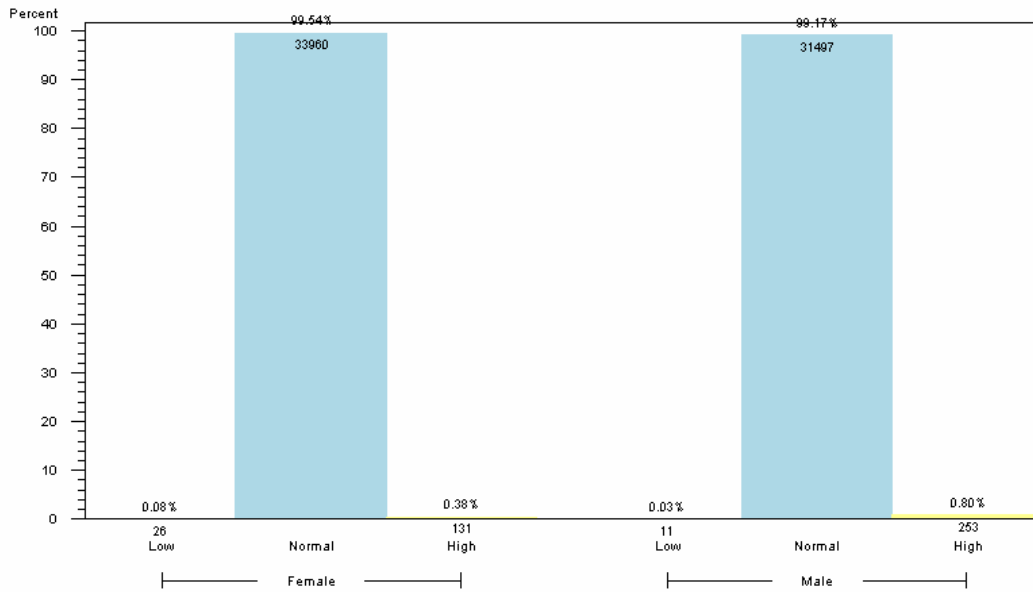
1<sup>st</sup> PERCENTILE=0.20, MEDIAN=0.40, 99<sup>th</sup> PERCENTILE=1.00



NORMAL RANGE 0.1-1.0  $10^3/\mu\text{L}$ , TAKEN FROM Labcorp Sample Test

## MONOCYTES (ABSOLUTE) IN ALL SUBJECTS

BY MONOCYTES CATEGORY WITHIN GENDER (PARTICIPANTS=65878)



1. LOW <0.1, NORMAL 0.1-1.0, HIGH >1.0 (UNIT:  $10^3/\mu\text{L}$ )

2. RANGES TAKEN FROM Labcorp Sample Test

3. RESULTS BASED ON LAB VALUES, NOT DIAGNOSIS

### Reader's Guide to Understanding This Information:

More than 95% of all participants had absolute monocyte levels within the expected range.