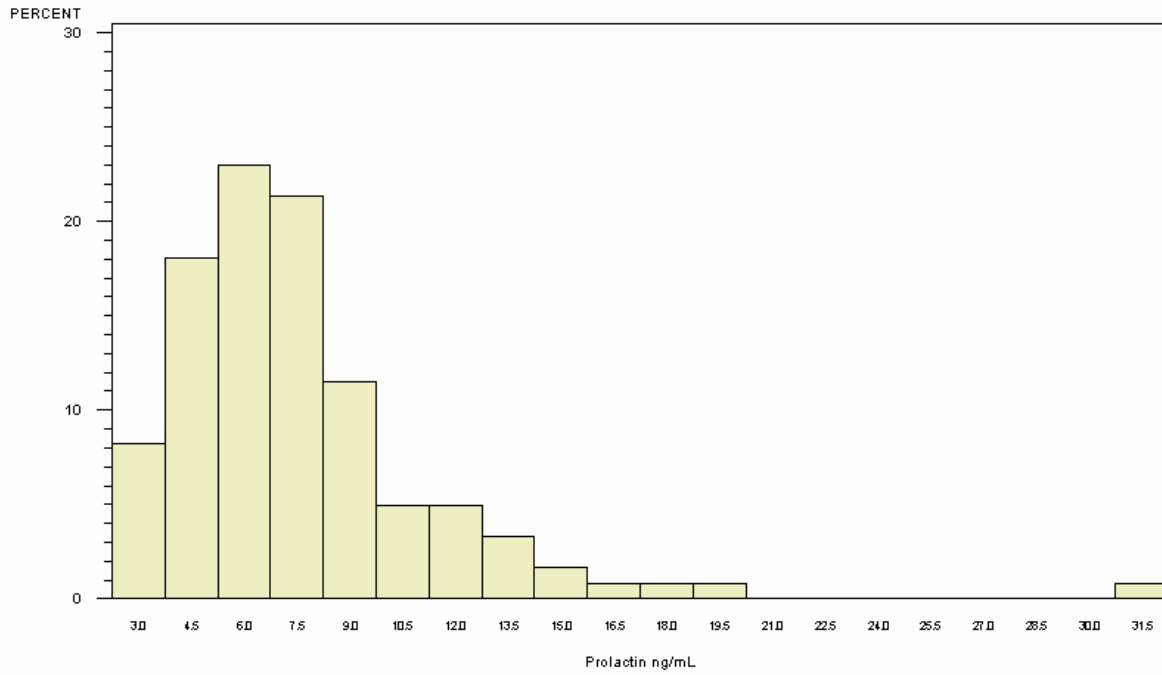


# Summary Results for Prolactin for Participants 1-3 Years of Age

## PROLACTIN IN FEMALE SUBJECTS AGED 1-3 YEARS

PARTICIPANTS=122, MEAN=7.56, STANDARD DEVIATION=3.91

1<sup>st</sup> PERCENTILE=2.40, MEDIAN=6.80, 99<sup>th</sup> PERCENTILE=20.20

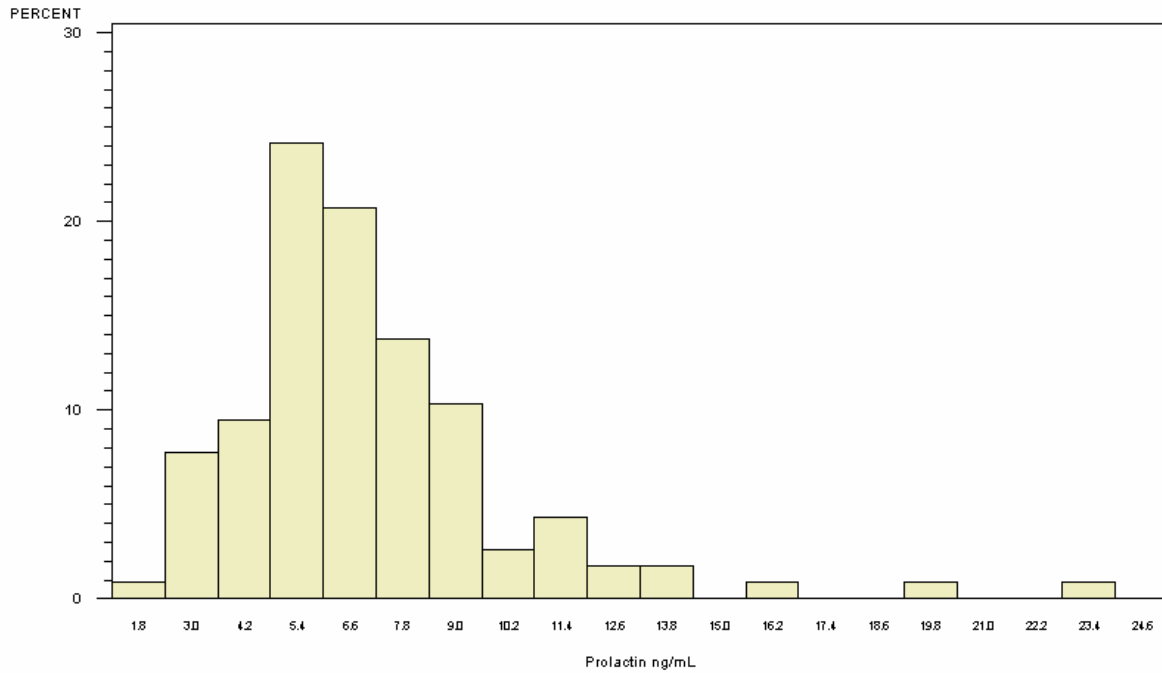


NORMAL RANGE 1.0-17.0 ng/mL, TAKEN FROM <http://www.labcorp.com/datasets/labcorp/html/chapter/mono/ri008700.htm>

## PROLACTIN IN MALE SUBJECTS AGED 1-3 YEARS

PARTICIPANTS=116, MEAN=7.00, STANDARD DEVIATION=3.21

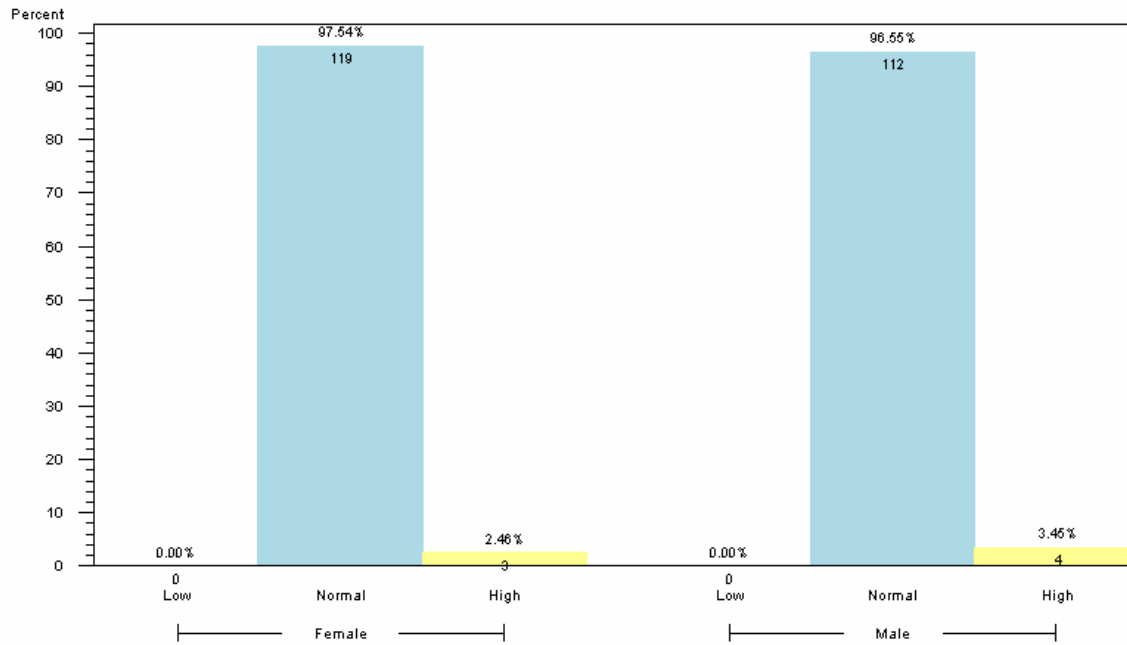
1<sup>st</sup> PERCENTILE=2.60, MEDIAN=6.30, 99<sup>th</sup> PERCENTILE=19.20



NORMAL RANGE 2.3-13.2 ng/mL, TAKEN FROM <http://www.labcorp.com/datasets/labcorp/html/chapter/mono/ri008700.htm>

## PROLACTIN IN SUBJECTS AGED 1-3 YEARS

BY PROLACTIN CATEGORY WITHIN GENDER (PARTICIPANTS=238)



1. FOR FEMALE IN THIS AGE GROUP, NORMAL RANGE IS 1.0-17.0 ng/mL
2. FOR MALE IN THIS AGE GROUP, NORMAL RANGE IS 2.3-13.2 ng/mL
3. RANGES TAKEN FROM <http://www.labcorp.com/datasets/labcorp/html/chapter/mono/ri008700.htm>
4. RESULTS BASED ON LAB VALUES, NOT DIAGNOSIS

### Reader's Guide to Understanding This Information:

More than 95% of participants 1-3 years of age had normal prolactin levels.