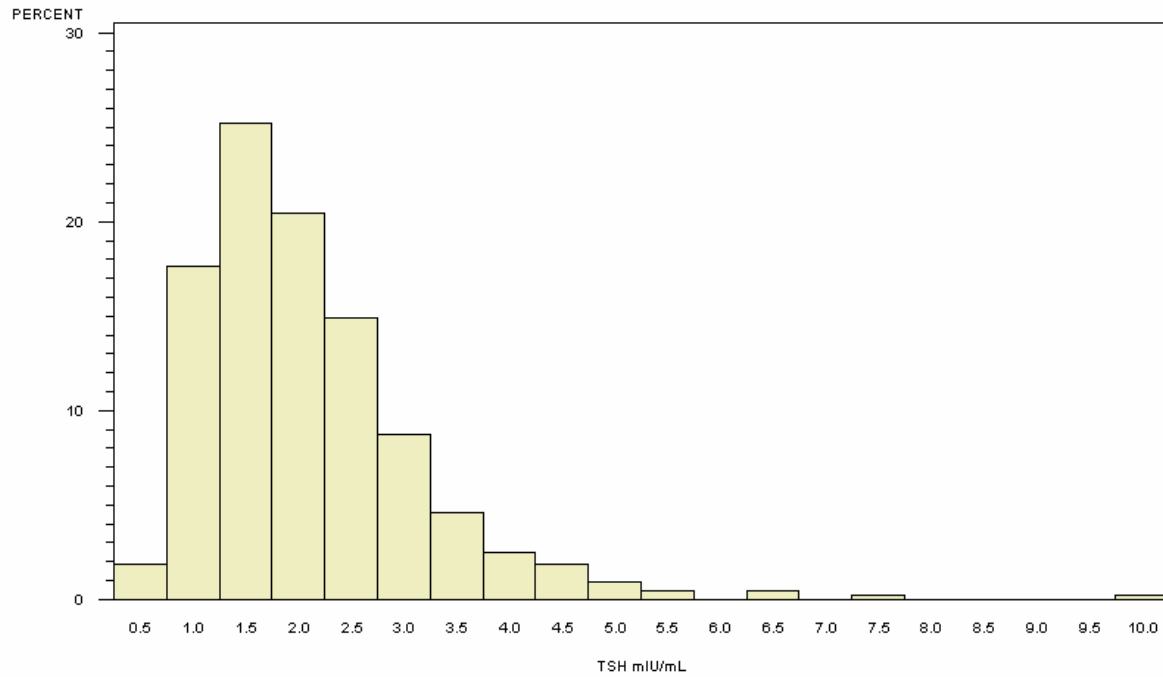


# Summary Results for Thyroid Stimulating Hormone (TSH) for Participants 1-5 Years of Age

## THYROID-STIMULATING HORMONE (TSH) IN FEMALE SUBJECTS AGED 1-5 YEARS

PARTICIPANTS=436, MEAN=2.08, STANDARD DEVIATION=1.08

1<sup>st</sup> PERCENTILE=0.65, MEDIAN=1.83, 99<sup>th</sup> PERCENTILE=5.67

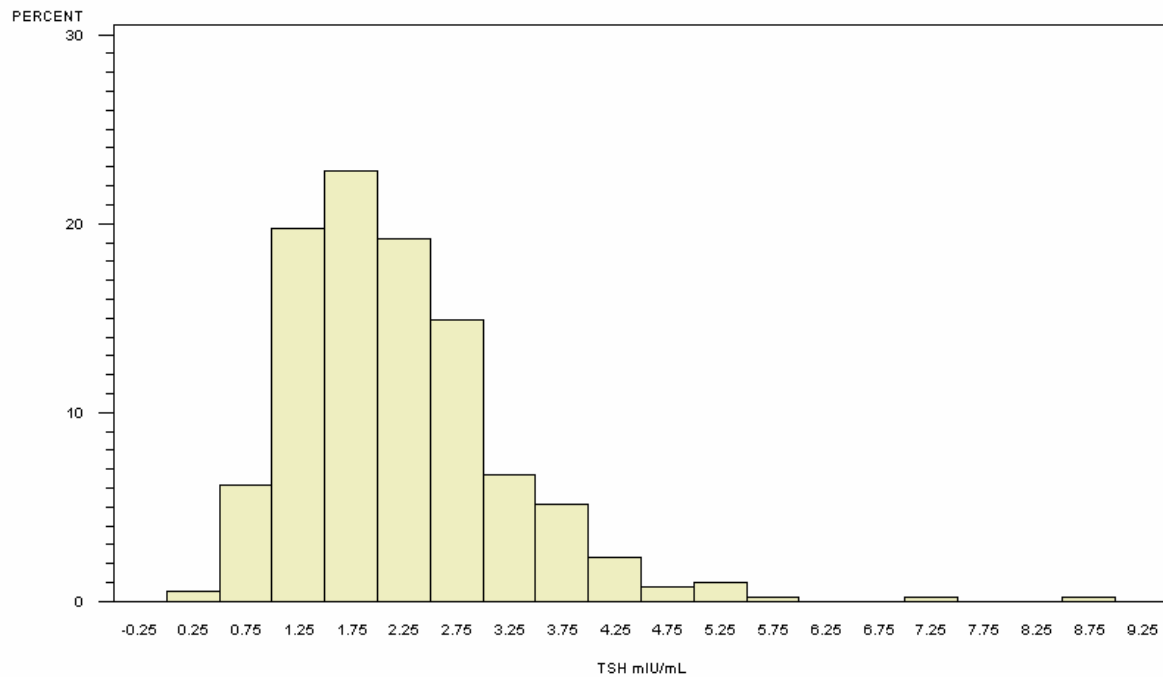


NORMAL RANGE 0.46-8.1 mIU/mL, TAKEN FROM <http://www.labcorp.com/datasets/labcorp/html/chapter/mono/ri010700.htm>

## THYROID-STIMULATING HORMONE (TSH) IN MALE SUBJECTS AGED 1-5 YEARS

PARTICIPANTS=390, MEAN=2.19, STANDARD DEVIATION=1.02

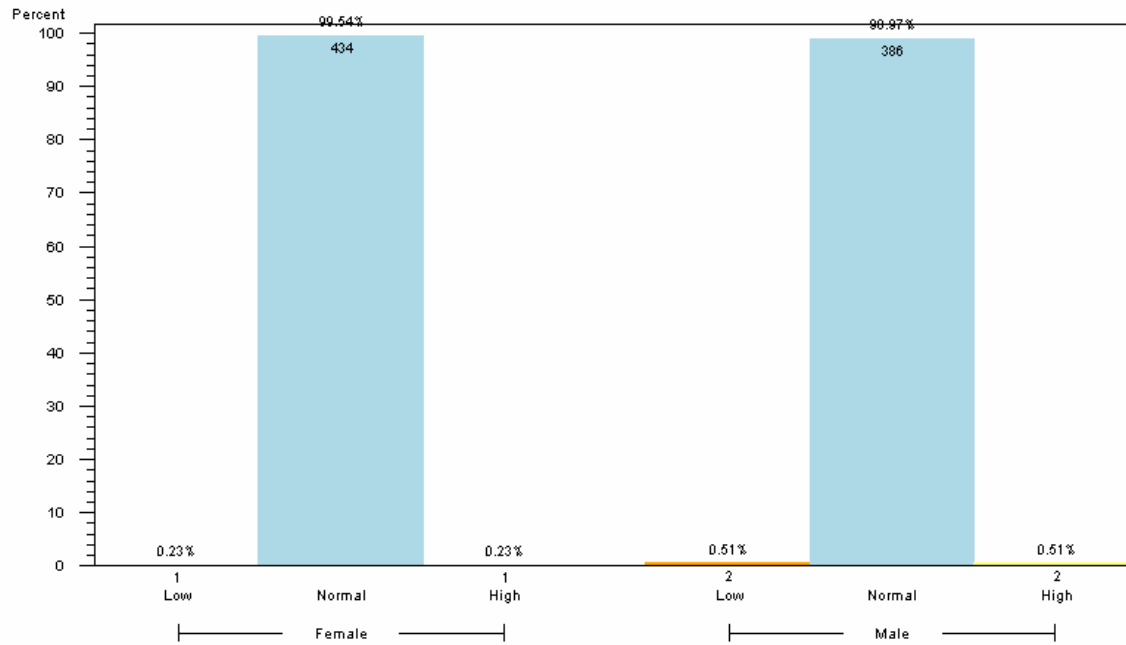
1<sup>st</sup> PERCENTILE=0.62, MEDIAN=2.01, 99<sup>th</sup> PERCENTILE=5.47



NORMAL RANGE 0.55-7.1 mIU/mL, TAKEN FROM <http://www.labcorp.com/datasets/labcorp/html/chapter/mono/ri010700.htm>

## THYROID-STIMULATING HORMONE (TSH) IN SUBJECTS AGED 1-5 YEARS

BY TSH CATEGORY WITHIN GENDER (PARTICIPANTS=826)



1. FOR FEMALE IN THIS AGE GROUP, NORMAL RANGE IS 0.46-8.1 mIU/mL
2. FOR MALE IN THIS AGE GROUP, NORMAL RANGE IS 0.55-7.1 mIU/mL
3. RANGES TAKEN FROM <http://www.labcorp.com/datasets/labcorp/html/chapter/mono/ri010700.htm>
4. RESULTS BASED ON LAB VALUES, NOT DIAGNOSIS

### Reader's Guide to Understanding This Information:

More than 95% of children 1-5 years of age had TSH levels within the expected range.