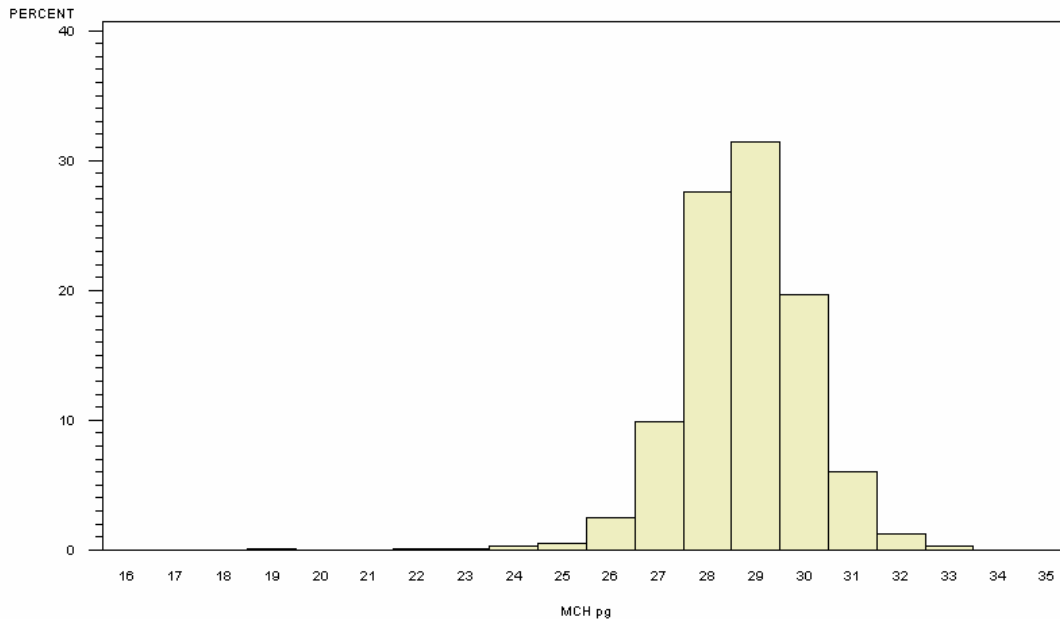


# Summary Results for Mean Corpuscular Hemoglobin Participants 2-9 Years of Age

## MEAN CORPUSCULAR HEMOGLOBIN (MCH) IN SUBJECTS AGED 2-9 YEARS

PARTICIPANTS=2928, MEAN=28.71, STANDARD DEVIATION=1.34

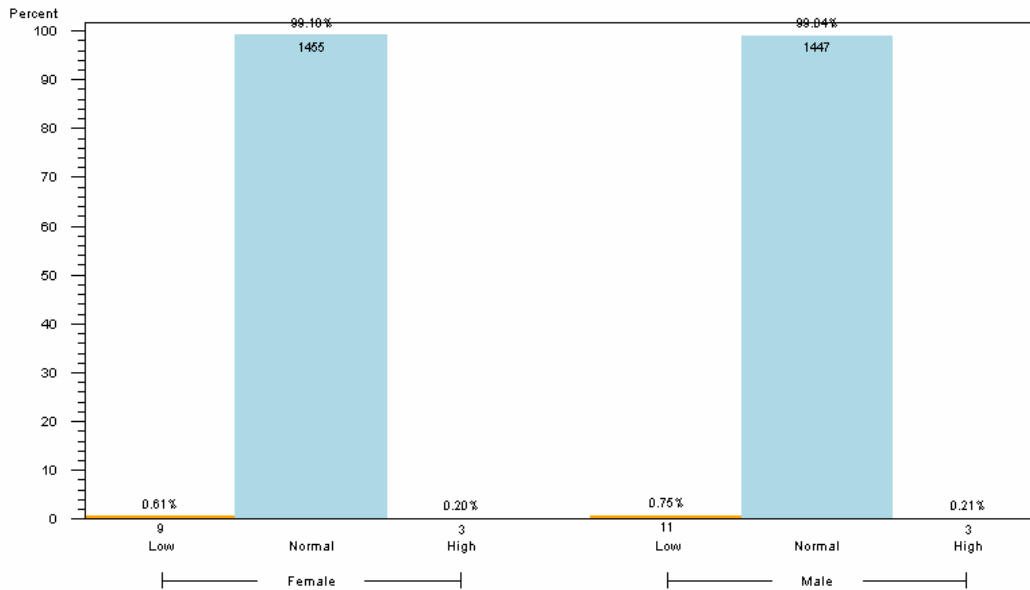
1<sup>st</sup> PERCENTILE=25.20, MEDIAN=28.70, 99<sup>th</sup> PERCENTILE=31.70



NORMAL RANGE 24.6-33 pg, TAKEN FROM <http://www.hosp.uky.edu/ClinLab/report.pdf>

## MEAN CORPUSCULAR HEMOGLOBIN (MCH) IN SUBJECTS AGED 2-9 YEARS

BY MCH CATEGORY WITHIN GENDER (PARTICIPANTS=2928)



1. NORMAL RANGE IS 24.6-33 pg
2. RANGES TAKEN FROM <http://www.hosp.uky.edu/ClinLab/report.pdf>
3. RESULTS BASED ON LAB VALUES, NOT DIAGNOSIS

### Reader's Guide to Understanding This Information:

More than 95% of girls and boys 2-9 years of age had MCH levels within the expected range.