

Directions to WV STEPS:

Driving from I-79:

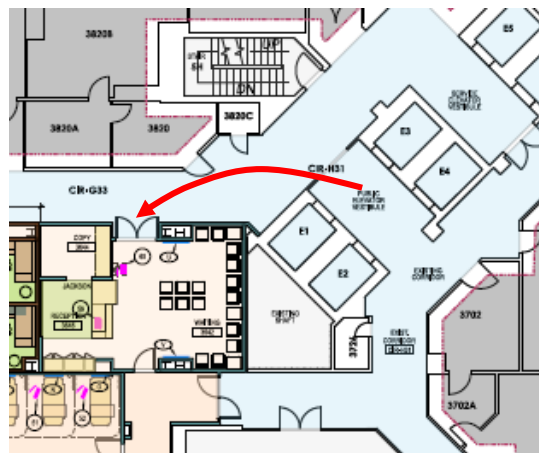
- Take exit 155 (West Virginia University Exit)
- Turn Right (signs for Start City/WVU/Osage)
- Go straight through 3 stoplights and continue up the hill on US-19
- At the 4th stoplight by the Coliseum use the left two lanes to turn left onto Patterson Dr
- Continue past 3 more stoplights and use the far right lane to turn onto Elmer Prince Drive
- Follow signs for Health Science Center on Elmer Prince Drive
- Stop at the booth and tell them you are here for your event at WV STEPS
- Park in the lots to the left of the Betty Puskar Breast Cancer Center

Coming from I-68:

- Take exit 7 (Airport/Pierpont)
- Turn right and stay in your left lane through the 1st light
- Use the left two lanes to turn onto US-119/Mileground Rd.
- At the roundabout/traffic circle, take the second right onto 705 West
- Continue through 2 stoplights
- At the third light take a left onto Don Nehlen Dr.
- At the light take a right onto Medical Center Dr. and follow signs for Health Sciences center
- At the roundabout/traffic circle, take first right and proceed straight to the booth
- Stop at the booth and tell them you are here for your event at WV STEPS
- Park in the lots to the left of the Betty Puskar Breast Cancer Center

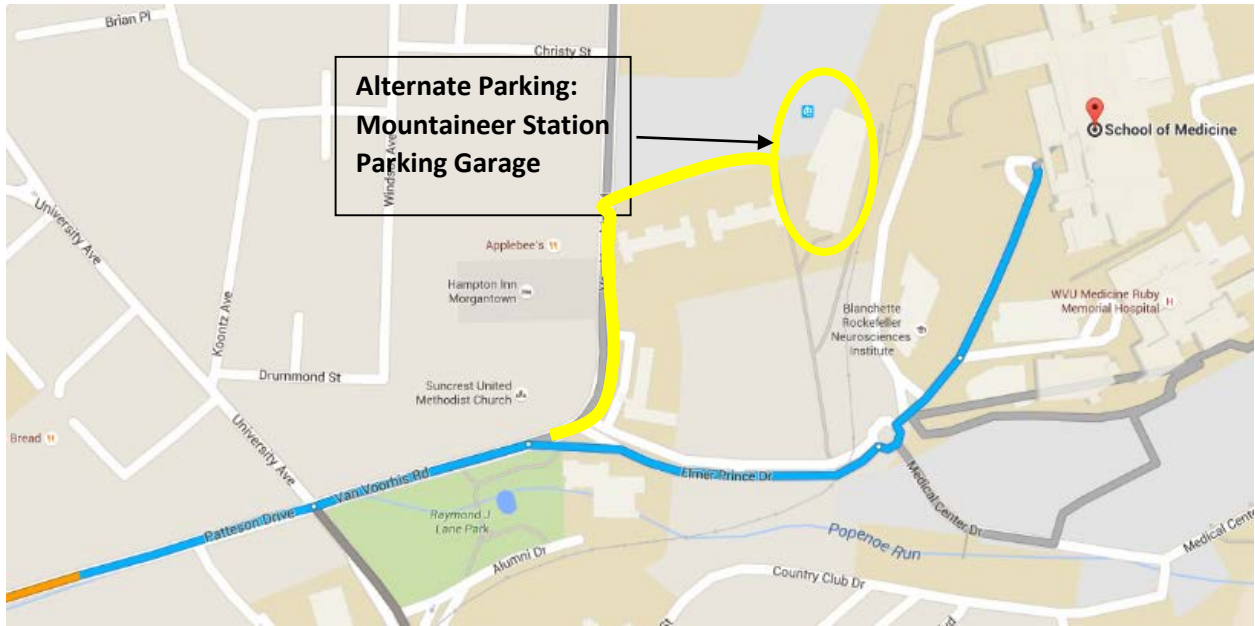
From the Parking Lot:

- Enter the main doors by the Betty Puskar Breast Cancer Center
- Follow hallway to elevators on left and take elevators to the 3rd floor
- Proceed to the reception area below from the elevators



***If you have issues parking by HSC, park in Mountaineer Station Garage marked on the I-79 image on the next page**

From I-79:



From I-68:

