

2021 WVU MEDICINE STROKE CONFERENCE

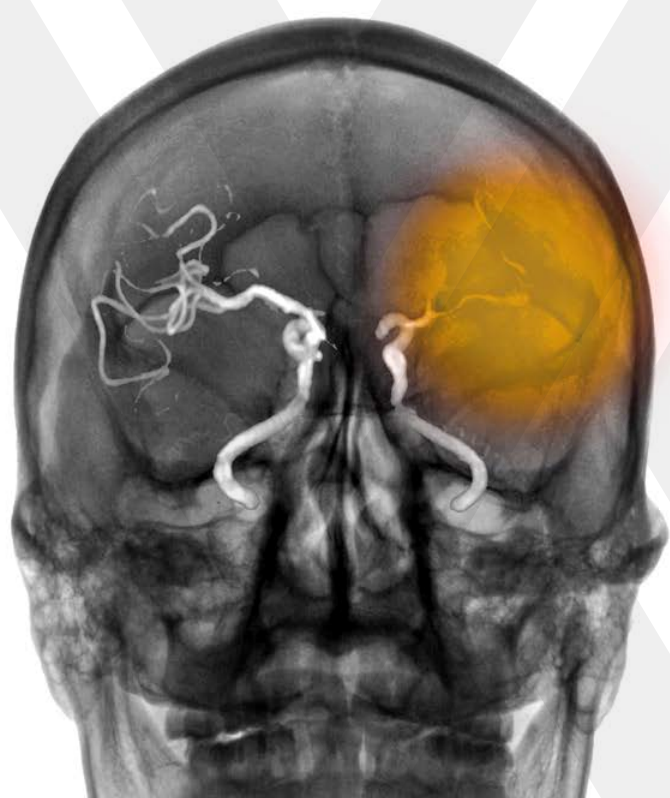
May 21, 2021

Hosted Virtually

Virtual connection information will be sent following registration.

REGISTRATION

To register online, go to <http://ce.wvu.edu/stroke/>



COURSE DESCRIPTION

This conference will feature lectures on the latest advances in adult stroke, including imaging and acute stroke intervention, multidisciplinary management of acute stroke patients, telemedicine capabilities, and more.

PROGRAM

7:55 am **Opening Remarks/Welcome**
Muhammad Alvi, MD

8:00 am **Keynote: Latest Advances in Stroke Diagnosis and Treatment**
Andrei Alexandrov, MD

9:15 am **Panel: Evaluation and Acute Stroke Imaging**
Moderator: Muhammad Alvi, MD
Panelists: Peter Griffin, MD, and SoHyun Boo, MD

10:30 am **Panel: Multidisciplinary Approach to Stroke Care – Pharmacological, Hematological, and Cardiac Considerations for Stroke Management**
Moderator: Muhammad Alvi, MD
Panelists: Amber Chiplinski, PharmD, BCPS; Samuel Merrill, MD, PhD; Yasmin Hamirani, MD

11:45 am Lunch

1:00 pm **Case Presentations: Complex Strokes – Case Reviews of Challenging Stroke Cases: Posterior Circulation and Large Vessel Occlusion Presentations Along With Transfer and Disposition Considerations**
Moderator: Muhammad Alvi, MD
Presenters: Amelia Adcock, MD; Theodore Katner, MD

2:15 pm **Panel: Stroke Systems of Care – Telestroke Operations and Capabilities, Advances in Stroke Programs and Care Across the State, and the Latest Statewide EMS Developments**
Moderator: Muhammad Alvi, MD
Panelists: Lawrence Georgiana, RN, MSN; Rex Lasure, MD

3:00 pm **Q&A, Closing Remarks, and Conference Adjournment**
Muhammad Alvi, MD

TARGET AUDIENCE

This course is designed for physicians, advanced practice providers, nurses, pharmacists, emergency medical personnel, rehabilitation specialists, and researchers with an interest in stroke care.

EDUCATIONAL OBJECTIVES

At the conclusion of this course, participants should be able to:

- Identify processes to improve stroke triage in the acute phase
- Identify radiological imaging protocols for acute stroke
- Describe hematological and pharmacological considerations in the management of stroke
- Describe stroke program development and discuss telemedicine consultation capabilities
- Recognize the challenges and perspectives of patients experiencing acute ischemic and hemorrhagic stroke

COURSE CREDIT

The West Virginia University School of Medicine is accredited by the Accreditation Council for Continuing Medical Education to provide continuing medical education for physicians.

The WVU Office of CME designates this live activity for a maximum of 5.75 *AMA PRA Category 1 Credits*.™ Physicians should claim only the credit commensurate with the extent of their participation in the activity.

This continuing education activity has been provided by the WVU School of Nursing for 6.9 contact hours. Of the total hours earned, 1.5 will be in the area of pharmacology consistent with the advanced pharmacology/ pharmacotherapeutic competencies of advanced practice nursing. The WVU School of Nursing is an approved provider of continuing education by the State of West Virginia Board of Examiners for Registered Professional Nurses, Legislative Rule #19CSR11-4 under provider number 50-26086.

CANCELLATIONS

Important: If you are unable to attend the conference after you have registered, you must notify us in writing by May 14, 2021, to receive a refund. No refunds for conference fees will be made after May 14, 2021. A \$15 fee will be charged for all canceled registrations.

We reserve the right to cancel individual sessions or the entire conference. In the event of a cancellation, a full tuition refund will be provided.

INVITED GUEST SPEAKER

ANDREI ALEXANDROV, MD
Semmes-Murphey Professor and Chairman
Department of Neurology
University of Tennessee Health Science Center

DISCLOSURE

It is the policy of the WVU School of Medicine Office of CME to ensure balance, independence, objectivity, and scientific rigor in all its educational activities. All faculty/authors/planners participating in our programs are expected to disclose any relevant relationships they may have with commercial companies. For this conference, Dr. Alexandrov has disclosed that he has received Honorarium as a speaker from Genentech, Inc. within the last 12 months. Dr. Boo has indicated that he is an employee or owner of Microvention. All others have indicated that they have no relevant interest to disclose.

These relationships, along with the educational content of this program, will be reviewed and any potential conflicts of interest will be resolved to the satisfaction of the WVU School of Medicine Office of CME prior to the activity. If a conflict cannot be resolved, the person involved will be removed from control of content, or the content will not be presented as part of the educational program.

WVU Medicine includes WVU Hospitals and University Health Associates. The WVU Stroke Center is operated by WVU Hospitals.

For more information about this course, contact Lawrence Georgiana at 304-293-0676. For any questions regarding course registration, contact the Office of CE at 304-293-3937.

West Virginia University does not discriminate on the grounds of race, color, national origin, sex, sexual orientation, age, veteran status, religion, or handicap in the administration of any of its educational programs, activities, or with respect to admission and employment. Inquiries may be directed to the Executive Officer for Social Justice, 105 Stewart Hall, Office of the President, 304-293-5496.

PROGRAM COST: \$35

Check made payable to West Virginia University or pay by credit card online at: <http://ce.wvu.edu/stroke/>

If not registering online, mail check payment with this form to:
WVU Office of CE / P.O. Box 9080 / Morgantown, WV 26506-9080

WVU PRESENTERS AND MODERATORS

AMELIA ADCOCK, MD
Associate Professor
Department of Neurology
WVU School of Medicine
Director, WVU Center for Teleneurology and Telestroke
Associate Director, WVU Stroke Center

MUHAMMAD ALVI, MD
Associate Professor
Department of Neurology
WVU School of Medicine
Medical Director, WVU Stroke Center

SOHYUN BOO, MD
Associate Professor, Section Chief, Neuroradiology
Associate Stroke Director, Endovascular Therapies
WVU School of Medicine

AMBER CHIPLINKSI, PHARM D, BCPS
Clinical Pharmacy Specialist
WVU Medicine

LAWRENCE GEORGIANA, RN, MSN
Director
WVU Medicine Stroke Center
WVU Rockefeller Neuroscience Institute

PETER GRIFFIN, MD
Assistant Professor
Department of Emergency Medicine
WVU School of Medicine

YASMIN HAMIRANI, MD
Assistant Professor
Department of Medicine
WVU School of Medicine
Associate Director, Structural Heart Imaging
WVU Heart and Vascular Institute

THEODORE KATNER, MD
Assistant Professor
Department of Neurology
WVU School of Medicine

REX LASURE, MD, FACEP
Regional Medical Director
WV Office of Emergency Medical Services
WV Department of Health and Human Resources

SAMUEL MERRILL, MD, PHD
Assistant Professor
Department of Medicine
WVU School of Medicine
Director, WVU Hemophilia Treatment Center