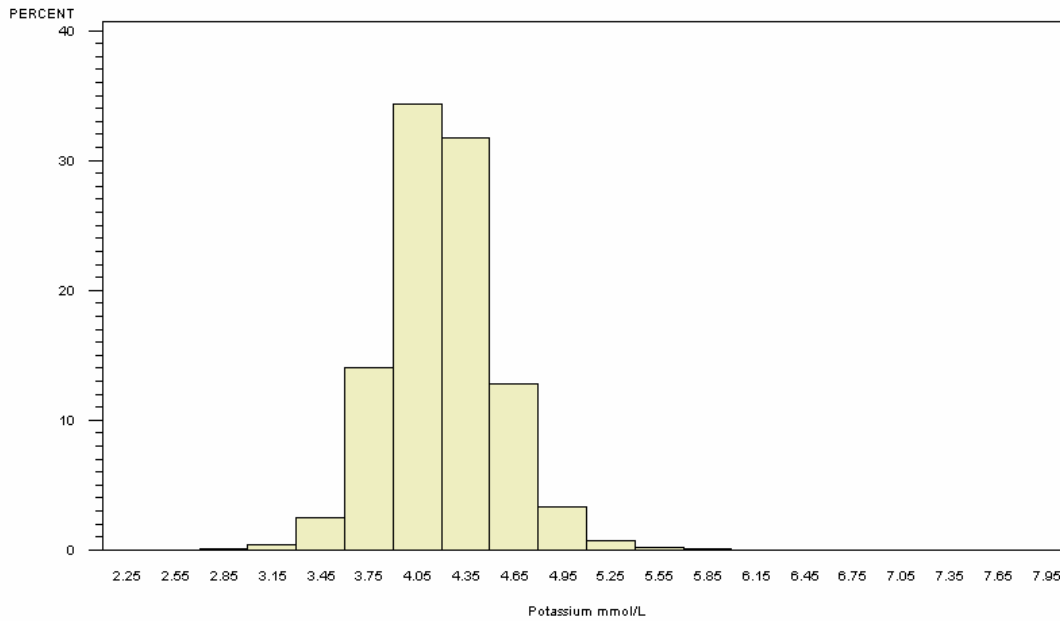


Summary Results for Potassium for Participants of All Ages

SERUM POTASSIUM IN ALL SUBJECTS

PARTICIPANTS=66275, MEAN=4.15, STANDARD DEVIATION=0.34

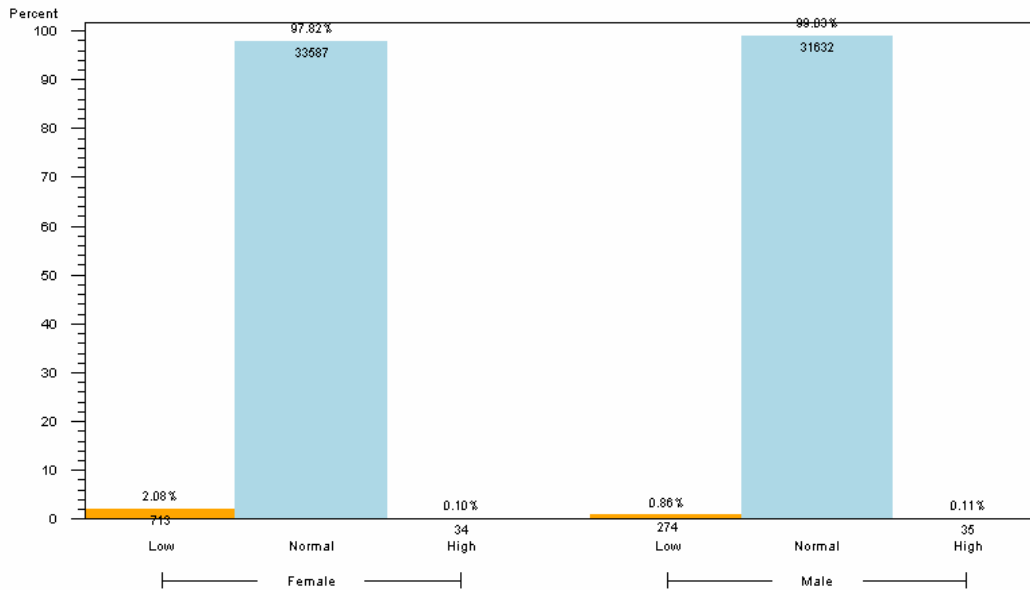
1st PERCENTILE=3.40, MEDIAN=4.10, 99th PERCENTILE=5.00



NORMAL RANGE 3.5-5.5 mmol/L, TAKEN FROM <http://www.labcorp.com/datasets/labcorp/html/chapter/mono/pi007300.htm>

SERUM POTASSIUM IN ALL SUBJECTS

BY POTASSIUM CATEGORY WITHIN GENDER (PARTICIPANTS=66275)



1. LOW <3.5, NORMAL 3.5-5.5, HIGH >5.5 (UNIT: mmol/L)

2. RANGES TAKEN FROM <http://www.labcorp.com/datasets/labcorp/html/chapter/mono/pi007300.htm>

3. RESULTS BASED ON LAB VALUES, NOT DIAGNOSIS

Reader's Guide to Understanding This Information:

More than 95% of all participants had serum potassium levels within the expected range.