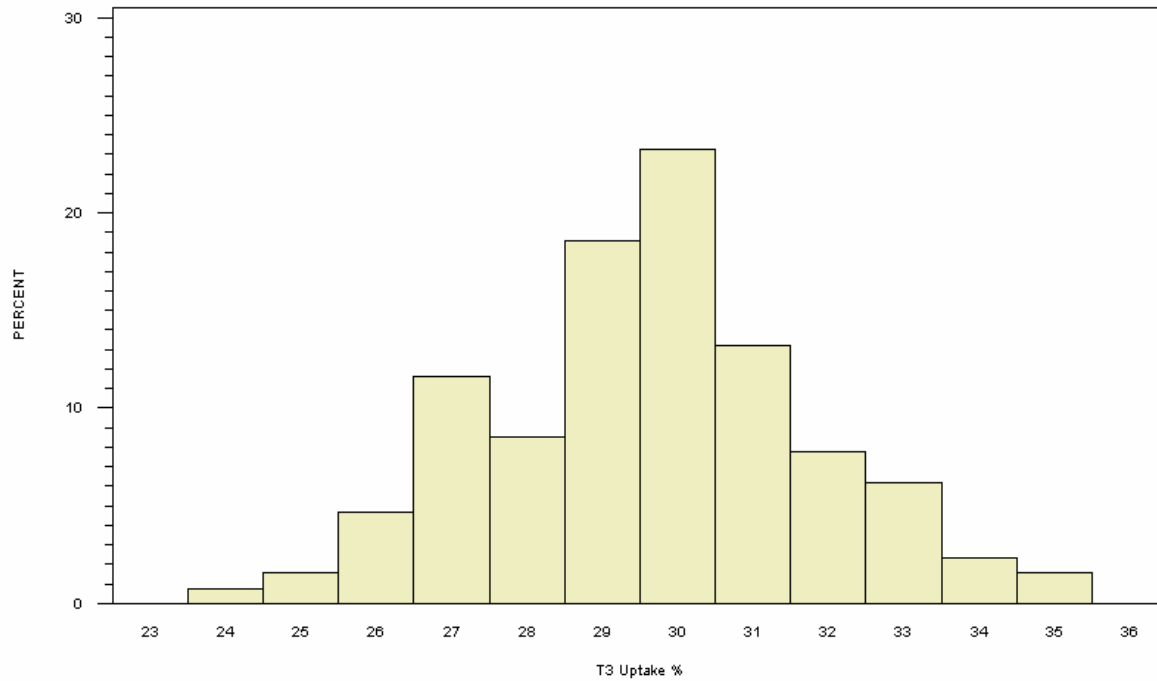


# Summary Results for T3 Uptake for Participants 1-3 Years of Age

## T3 UPTAKE IN FEMALE SUBJECTS AGED 1-3 YEARS

PARTICIPANTS=129, MEAN=29.63, STANDARD DEVIATION=2.15

1<sup>st</sup> PERCENTILE=25.00, MEDIAN=30.00, 99<sup>th</sup> PERCENTILE=35.00

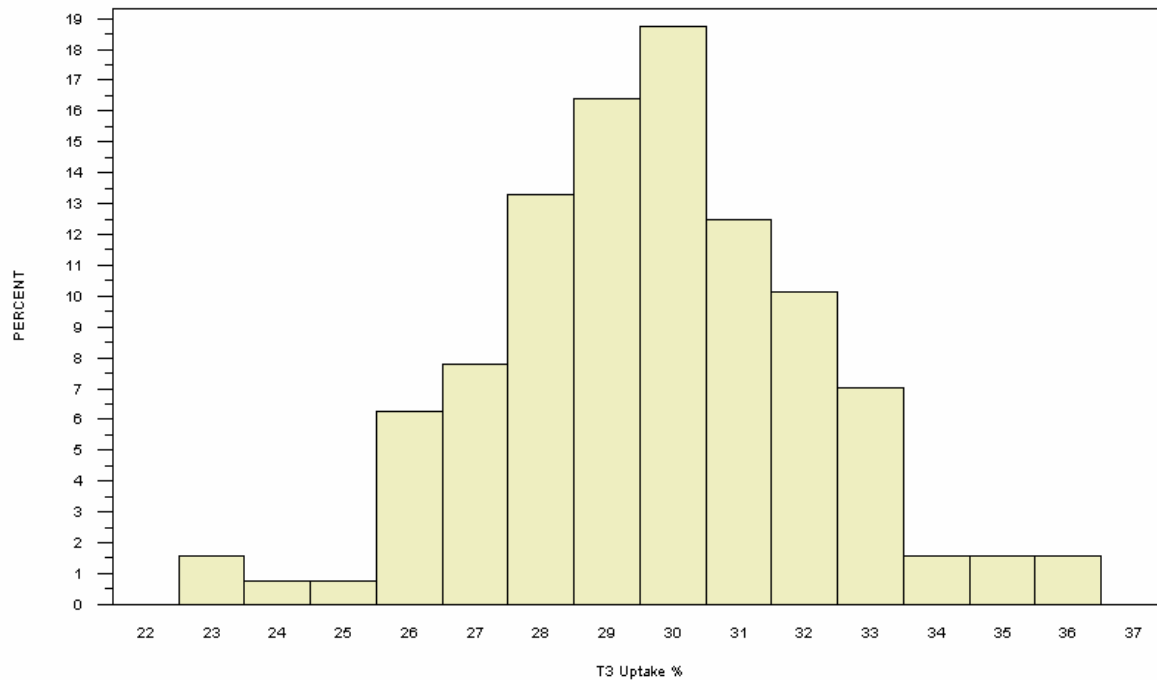


NORMAL RANGE 24-36 %, TAKEN FROM <http://www.labcorp.com/datasets/labcorp/html/chapter/mono/ri009900.htm>

## T3 UPTAKE IN MALE SUBJECTS AGED 1-3 YEARS

PARTICIPANTS=128, MEAN=29.66, STANDARD DEVIATION=2.44

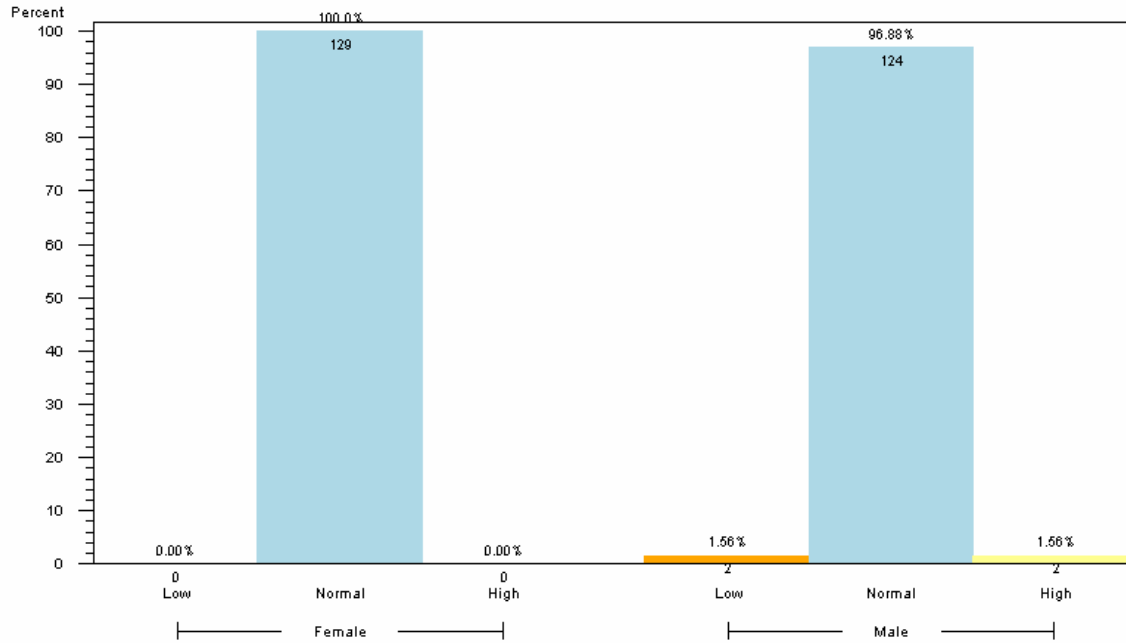
1<sup>st</sup> PERCENTILE=23.00, MEDIAN=30.00, 99<sup>th</sup> PERCENTILE=36.00



NORMAL RANGE 24-35 %, TAKEN FROM <http://www.labcorp.com/datasets/labcorp/html/chapter/mono/ri009900.htm>

## T3 UPTAKE IN SUBJECTS AGED 1-3 YEARS

BY T3 UPTAKE CATEGORY WITHIN GENDER (PARTICIPANTS=257)



1. FOR FEMALE IN THIS AGE GROUP, NORMAL RANGE IS 24-36 %
2. FOR MALE IN THIS AGE GROUP, NORMAL RANGE IS 24-35 %
3. RANGES TAKEN FROM <http://www.labcorp.com/datasets/labcorp/html/chapter/mono/ri009900.htm>
4. RESULTS BASED ON LAB VALUES, NOT DIAGNOSIS

### Reader's Guide to Understanding This Information:

More than 95% of participants 1-3 years of age had T3 uptake levels within the expected range.