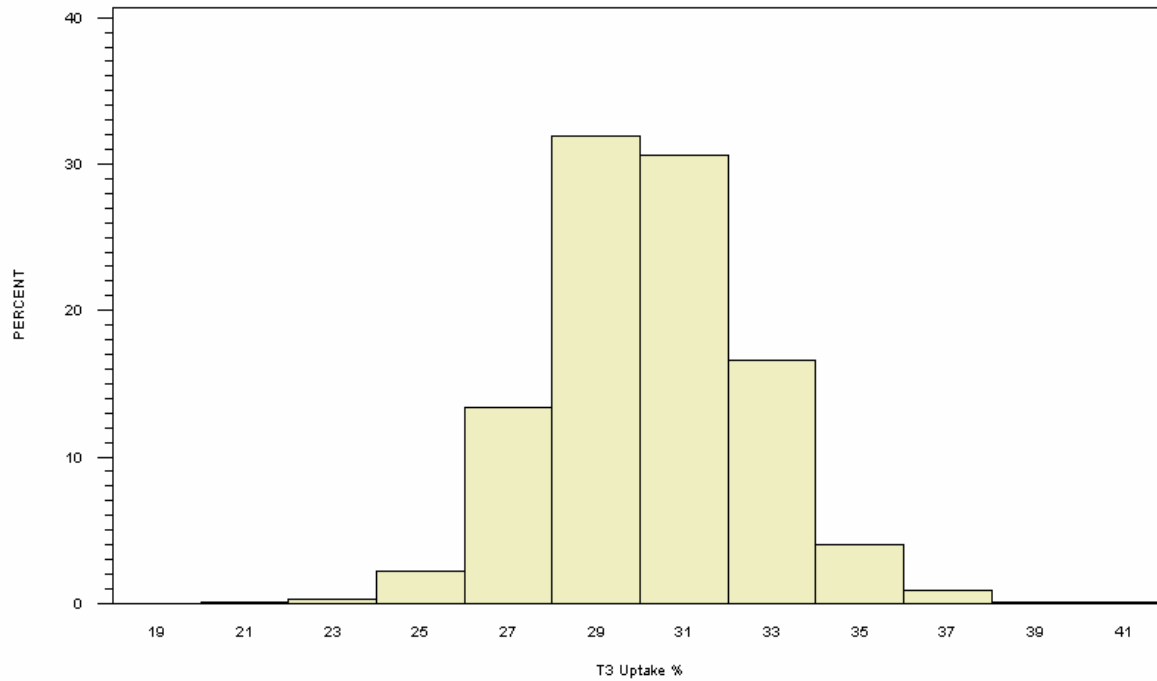


# Summary Results for T3 Uptake for Participants 7-12 Years of Age

## T3 UPTAKE IN FEMALE SUBJECTS AGED 7-12 YEARS

PARTICIPANTS=1955, MEAN=29.71, STANDARD DEVIATION=2.30

1<sup>st</sup> PERCENTILE=25.00, MEDIAN=30.00, 99<sup>th</sup> PERCENTILE=35.00

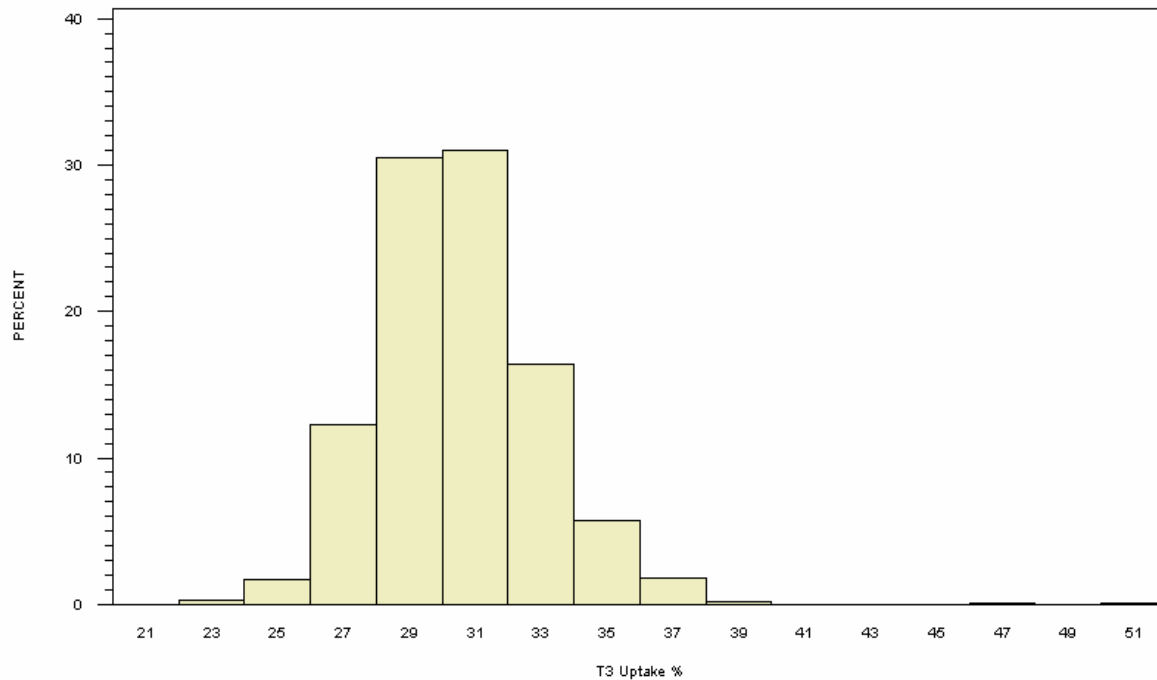


NORMAL RANGE 22-35 %, TAKEN FROM <http://www.labcorp.com/datasets/labcorp/html/chapter/mono/ri009900.htm>

## T3 UPTAKE IN MALE SUBJECTS AGED 7-12 YEARS

PARTICIPANTS=2103, MEAN=29.98, STANDARD DEVIATION=2.49

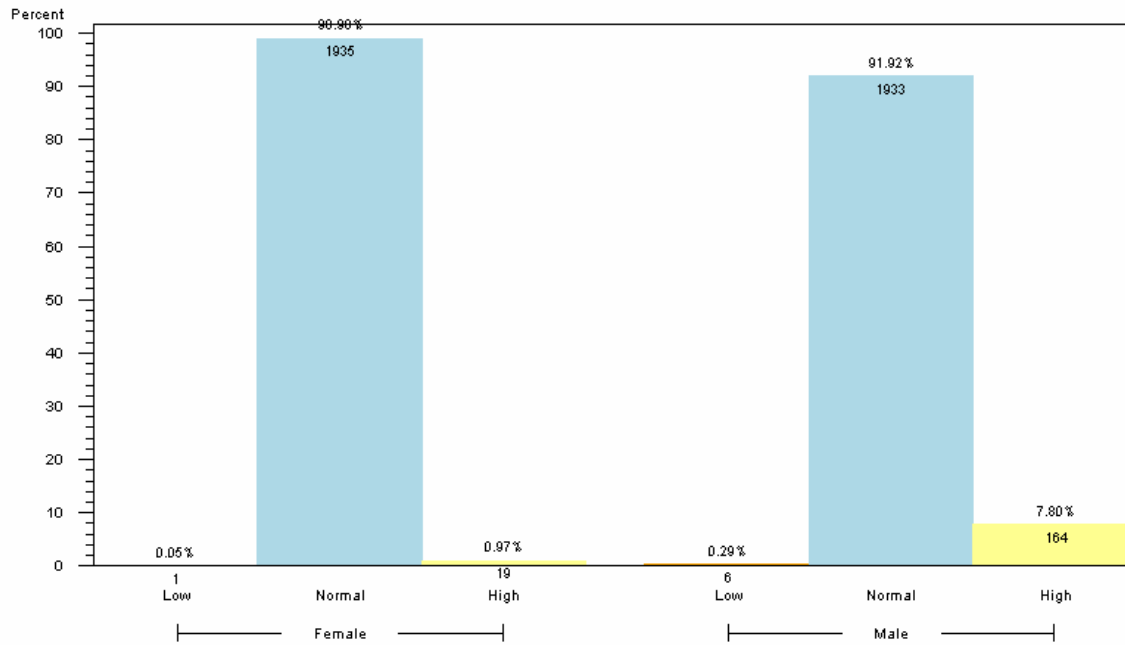
1<sup>st</sup> PERCENTILE=25.00, MEDIAN=30.00, 99<sup>th</sup> PERCENTILE=36.00



NORMAL RANGE 24-33 %, TAKEN FROM <http://www.labcorp.com/datasets/labcorp/html/chapter/mono/ri009900.htm>

## T3 UPTAKE IN SUBJECTS AGED 7-12 YEARS

BY T3 UPTAKE CATEGORY WITHIN GENDER (PARTICIPANTS=4058)



1. FOR FEMALE IN THIS AGE GROUP, NORMAL RANGE IS 22-35 %
2. FOR MALE IN THIS AGE GROUP, NORMAL RANGE IS 24-33 %
3. RANGES TAKEN FROM <http://www.labcorp.com/datasets/labcorp/html/chapter/mono/ri009900.htm>
4. RESULTS BASED ON LAB VALUES, NOT DIAGNOSIS

### Reader's Guide to Understanding This Information:

More than 90% of participants 7-12 years of age had T3 uptake levels within the expected range. A higher proportion of boys compared to girls had elevated T3 levels.