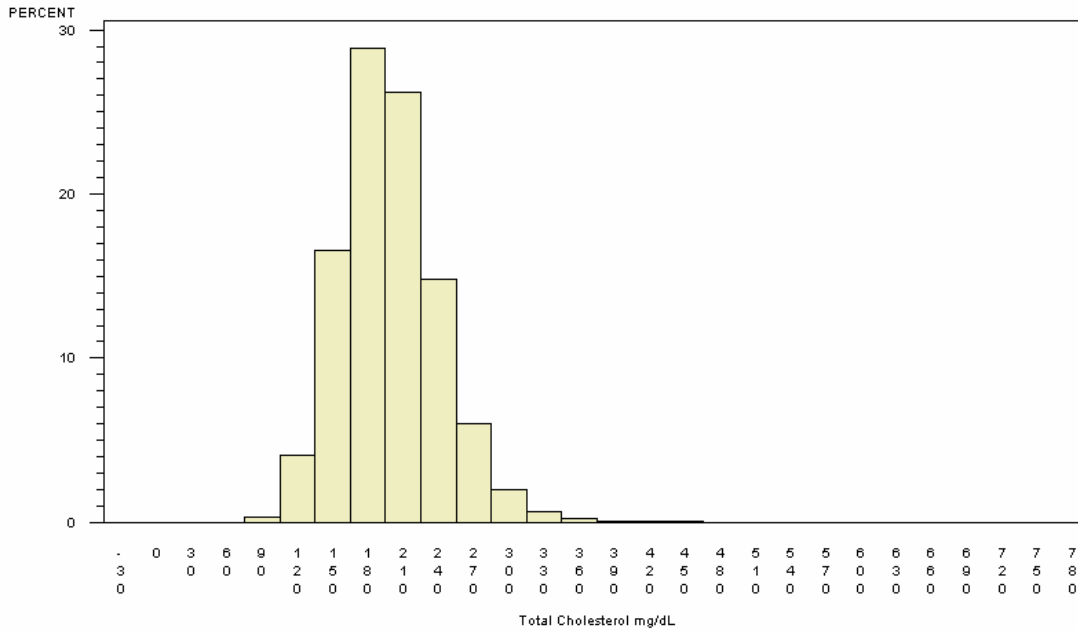


Summary Results for Total Cholesterol for Participants ≥ 20 Years of Age

SERUM TOTAL CHOLESTEROL LEVELS IN ADULTS AGED ≥20 YEARS

PARTICIPANTS=54235, MEAN=198.31, STANDARD DEVIATION=42.58

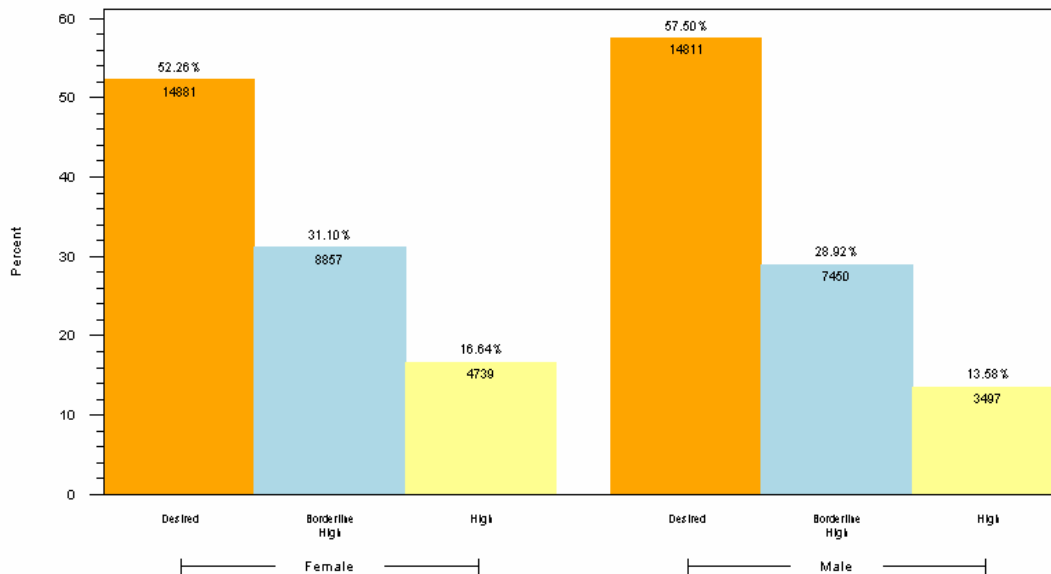
1st PERCENTILE=116.00, MEDIAN=195.00, 99th PERCENTILE=318.00



NORMAL <200 mg/dL, TAKEN FROM <http://www.nhlbi.nih.gov/guidelines/cholesterol/atglance.pdf>

SERUM TOTAL CHOLESTEROL LEVELS IN ADULTS AGED ≥20 YEARS

BY CHOLESTEROL CATEGORY WITHIN GENDER FOR ADULTS (PARTICIPANTS=54235)



1. DESIRED <200, BORDERLINE HIGH 200-239, HIGH ≥240 (UNIT: mg/dL)
2. RANGES TAKEN FROM <http://www.nhlbi.nih.gov/guidelines/cholesterol/atglance.pdf>
3. RESULTS BASED ON LAB VALUES, NOT DIAGNOSIS

Reader's Guide to Understanding This Information:

Of adult participants, almost ½ had total cholesterol above desired levels.