

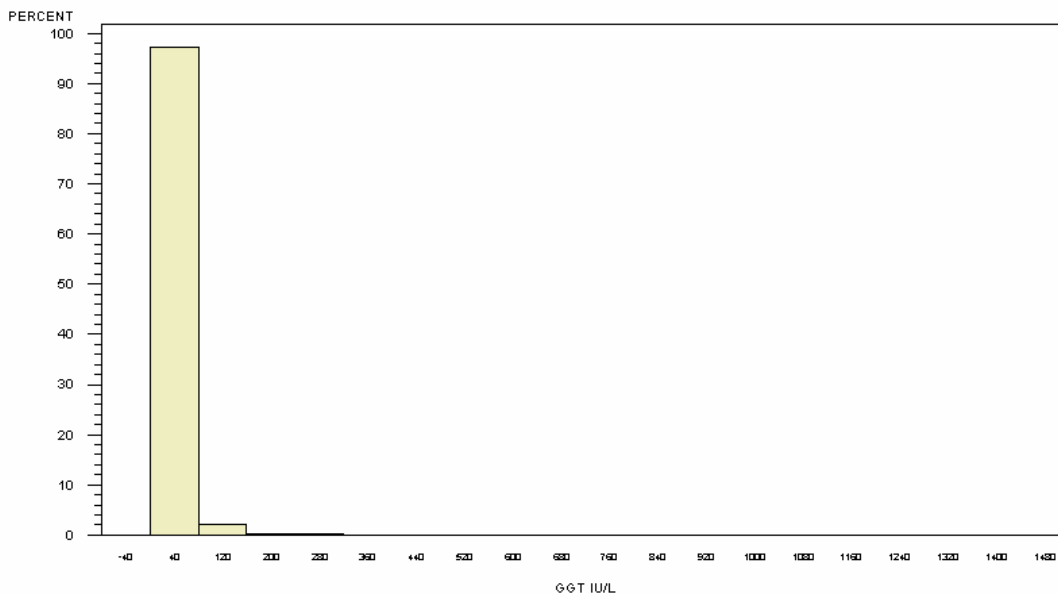
# Summary Results for Gamma-glutamyl Transpeptidase (GGT) for All Participants ( $\geq 8$ Hours Fasting)

GGT IN ALL FEMALE AFTER  $\geq 8$  HOURS OF FASTING

FOR ALL AGE GROUPS

PARTICIPANTS=9437, MEAN=22.72, STANDARD DEVIATION=30.05

1<sup>st</sup> PERCENTILE=6.00, MEDIAN=16.00, 99<sup>th</sup> PERCENTILE=125.00



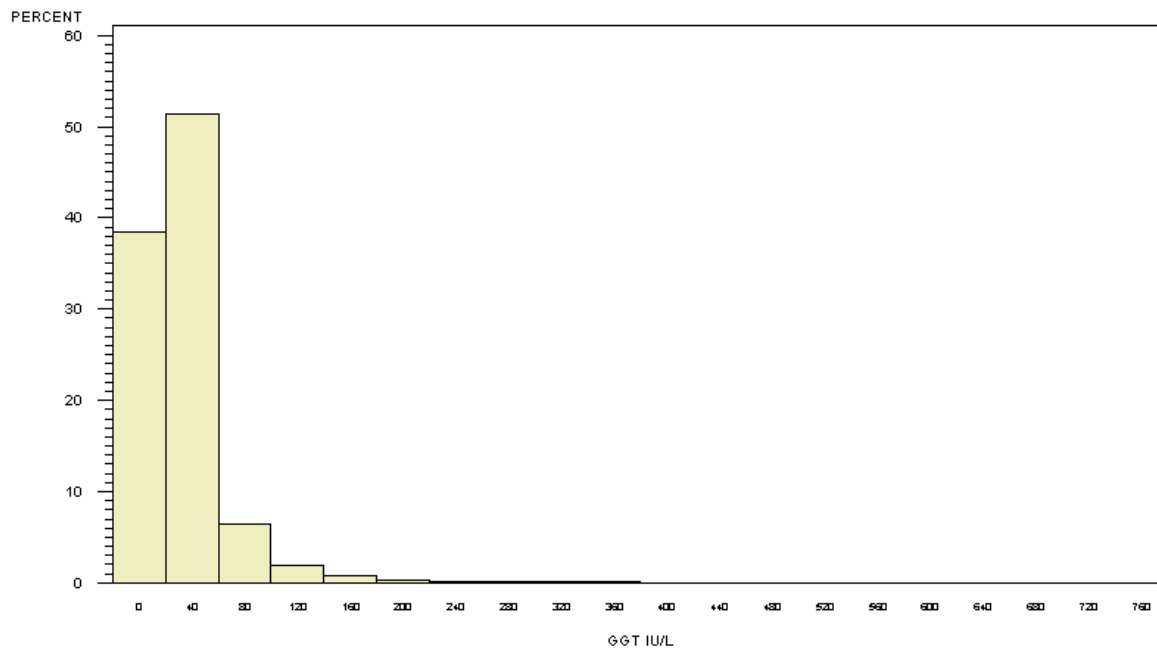
NORMAL 0-60 IU/L, TAKEN FROM <http://www.labcorp.com/datasets/labcorp/html/chapter/mono/p004400.htm>

GGT IN ALL MALE AFTER  $\geq 8$  HOURS OF FASTING

FOR ALL AGE GROUPS

PARTICIPANTS=8791, MEAN=33.16, STANDARD DEVIATION=38.48

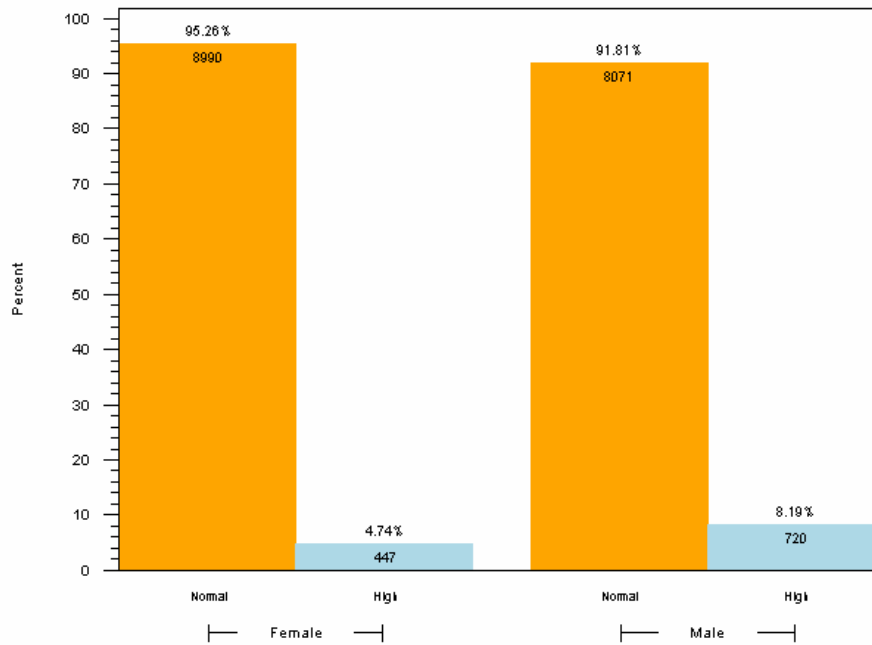
1<sup>st</sup> PERCENTILE=8.00, MEDIAN=24.00, 99<sup>th</sup> PERCENTILE=174.00



NORMAL 0-65 IU/L, TAKEN FROM <http://www.labcorp.com/datasets/labcorp/html/chapter/mono/p004400.htm>

## GGT IN ALL SUBJECTS AFTER $\geq 8$ HOURS OF FASTING

BY GGT CATEGORY WITHIN GENDER (PARTICIPANTS=18228)



1. FOR FEMALE: NORMAL 0-65, HIGH  $>65$  (UNIT: IU/L)
2. FOR MALE: NORMAL 0-60, HIGH  $>60$  (UNIT: IU/L)
3. RANGES TAKEN FROM <http://www.labcorp.com/datasets/labcorp/html/chapter/mono/pr004400.htm>
4. RESULTS BASED ON LAB VALUES, NOT DIAGNOSIS

### Reader's Guide to Understanding This Information:

Approximately 95% of female and 90% of male fasting participants had normal levels of GGT. A slightly higher proportion of men compared to women had elevated levels of GGTS.