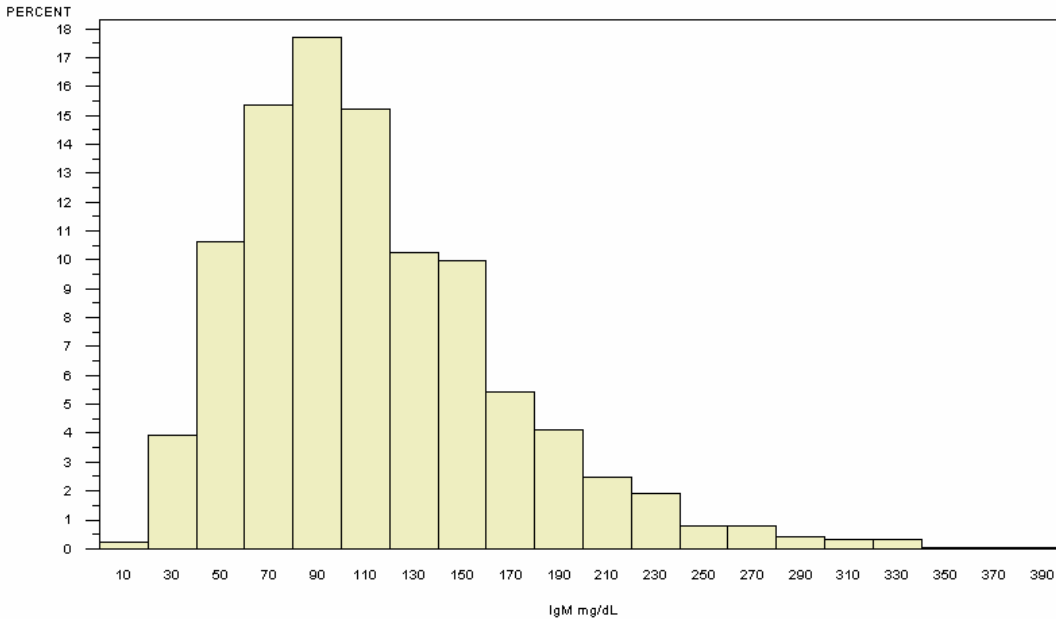


# Summary Results for Immunoglobulin-M (IgM) for Participants 12-13 Years of Age

## SERUM IMMUNOGLOBULIN M (IgM) IN SUBJECTS AGED 12-13 YEARS

PARTICIPANTS=1656, MEAN=112.06, STANDARD DEVIATION=54.64

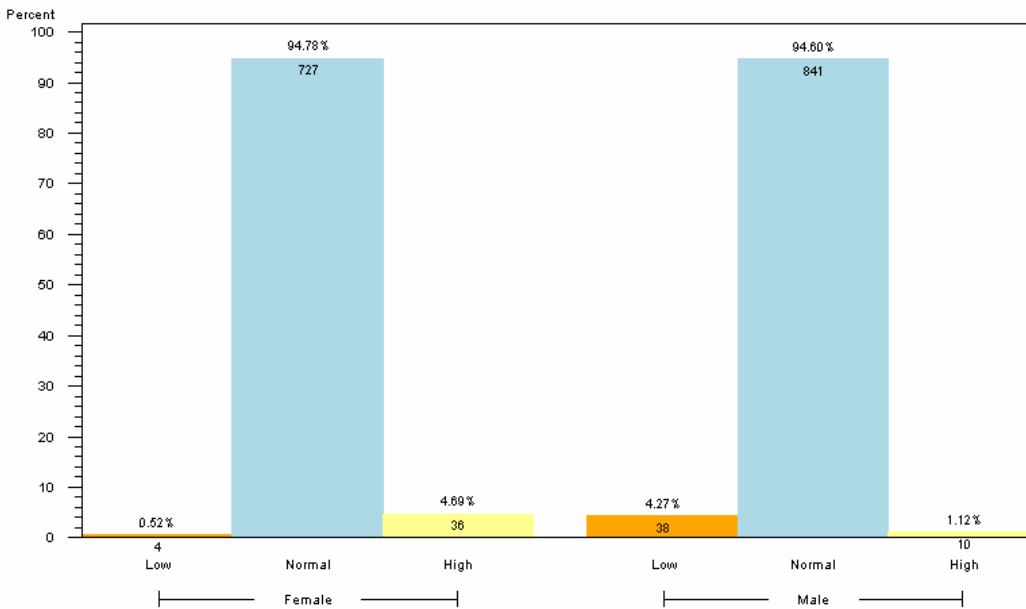
1<sup>st</sup> PERCENTILE=29.00, MEDIAN=101.50, 99<sup>th</sup> PERCENTILE=287.00



NORMAL RANGE 35-239 mg/dL, TAKEN FROM <http://www.labcorp.com/datasets/labcorp/html/chapter/mono/ss013100.htm>

## SERUM IMMUNOGLOBULIN M (IgM) IN SUBJECTS AGED 12-13 YEARS

BY IgM CATEGORY WITHIN GENDER (PARTICIPANTS=1656)



1. NORMAL RANGE IS 35-239 mg/dL
2. RANGES TAKEN FROM <http://www.labcorp.com/datasets/labcorp/html/chapter/mono/ss013100.htm>
3. RESULTS BASED ON LAB VALUES, NOT DIAGNOSIS

### Reader's Guide to Understanding This Information:

Approximately 95% of children 12-13 years of age had IgM levels within the expected range. A higher proportion of girls compared to boys had elevated levels of IgM.