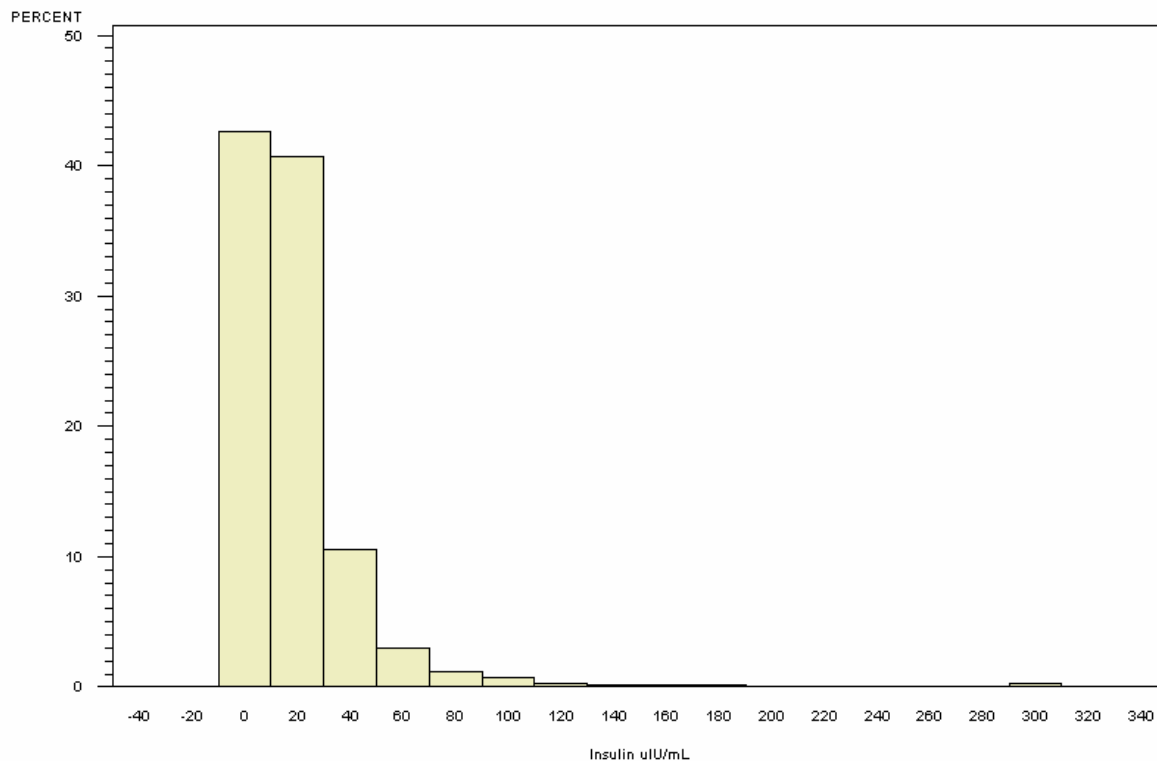


# Summary Results for Serum Insulin for Non-Fasting Participants (Fasting <8 Hours)

## INSULIN IN CHILDREN AGED <20 YEARS AFTER <4 HOURS OF FASTING

PARTICIPANTS=5128, MEAN=19.34, STANDARD DEVIATION=26.52

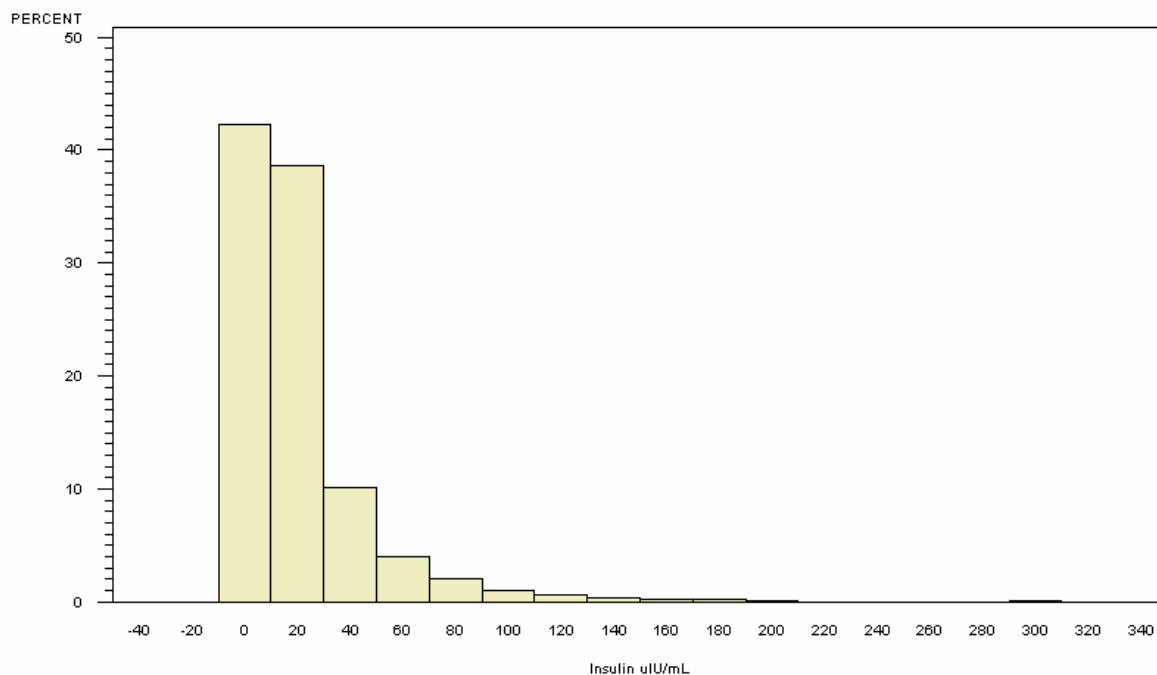
1<sup>st</sup> PERCENTILE=1.00, MEDIAN=11.90, 99<sup>th</sup> PERCENTILE=127.00



## INSULIN IN ADULTS AGED >19 YEARS AFTER <4 HOURS OF FASTING

PARTICIPANTS=23143, MEAN=20.95, STANDARD DEVIATION=27.45

1<sup>st</sup> PERCENTILE=1.00, MEDIAN=12.10, 99<sup>th</sup> PERCENTILE=138.00

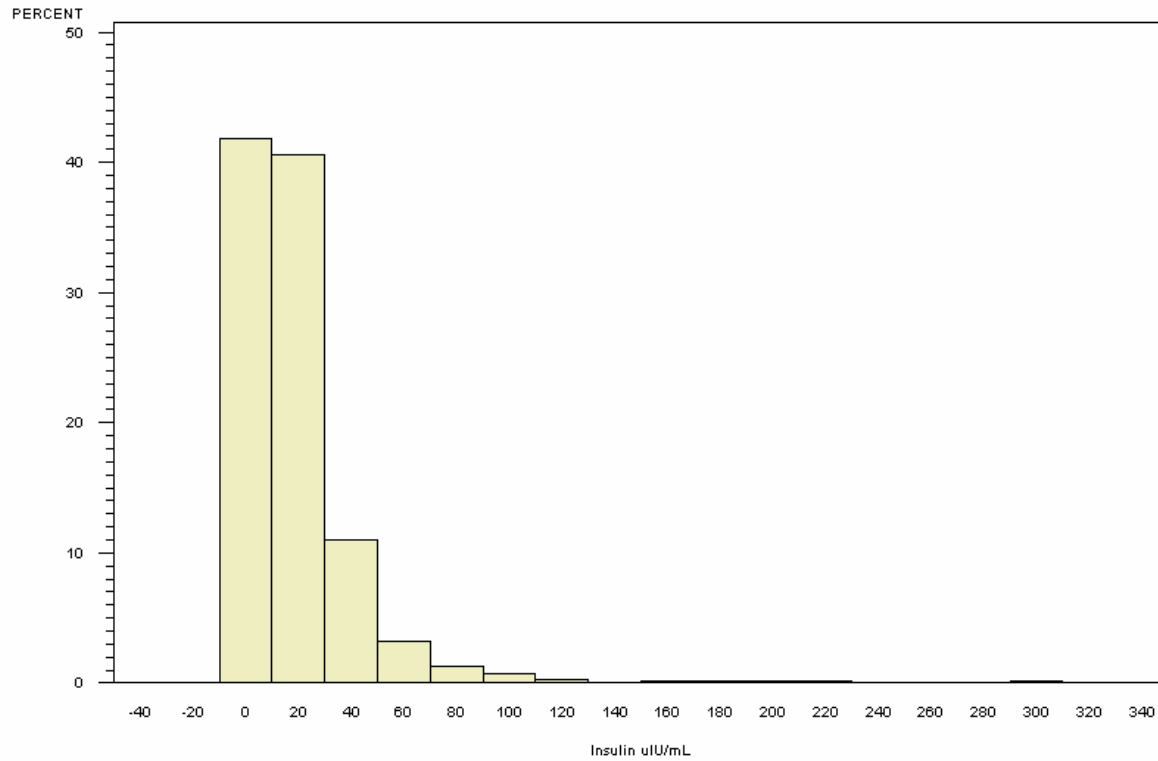


NORMAL RANGE 0.0-29.1 uIU/mL, TAKEN FROM <http://www.labcorp.com/datasets/labcorp/html/chapter/mono/sf002600.htm>

### INSULIN IN CHILDREN AGED <20 YEARS AFTER 4-8 HOURS OF FASTING

PARTICIPANTS=2524, MEAN=19.49, STANDARD DEVIATION=25.77

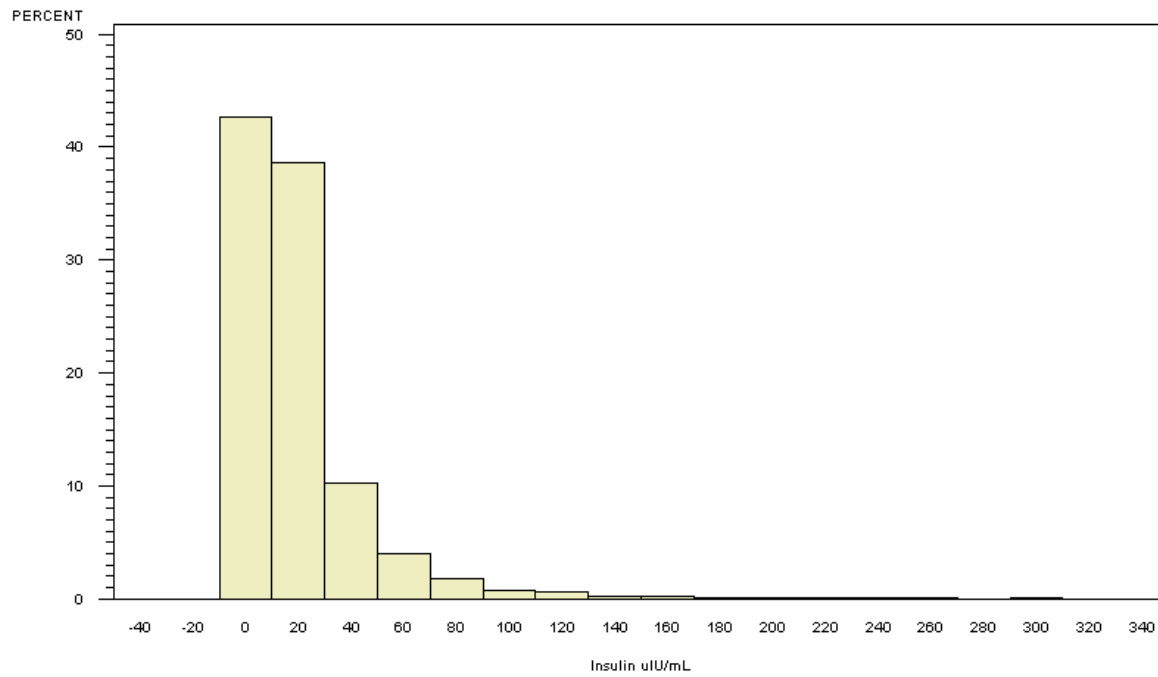
1<sup>st</sup> PERCENTILE=1.00, MEDIAN=12.20, 99<sup>th</sup> PERCENTILE=127.00



### INSULIN IN ADULTS AGED >19 YEARS AFTER 4-8 HOURS OF FASTING

PARTICIPANTS=11676, MEAN=20.69, STANDARD DEVIATION=28.03

1<sup>st</sup> PERCENTILE=1.00, MEDIAN=11.90, 99<sup>th</sup> PERCENTILE=140.00

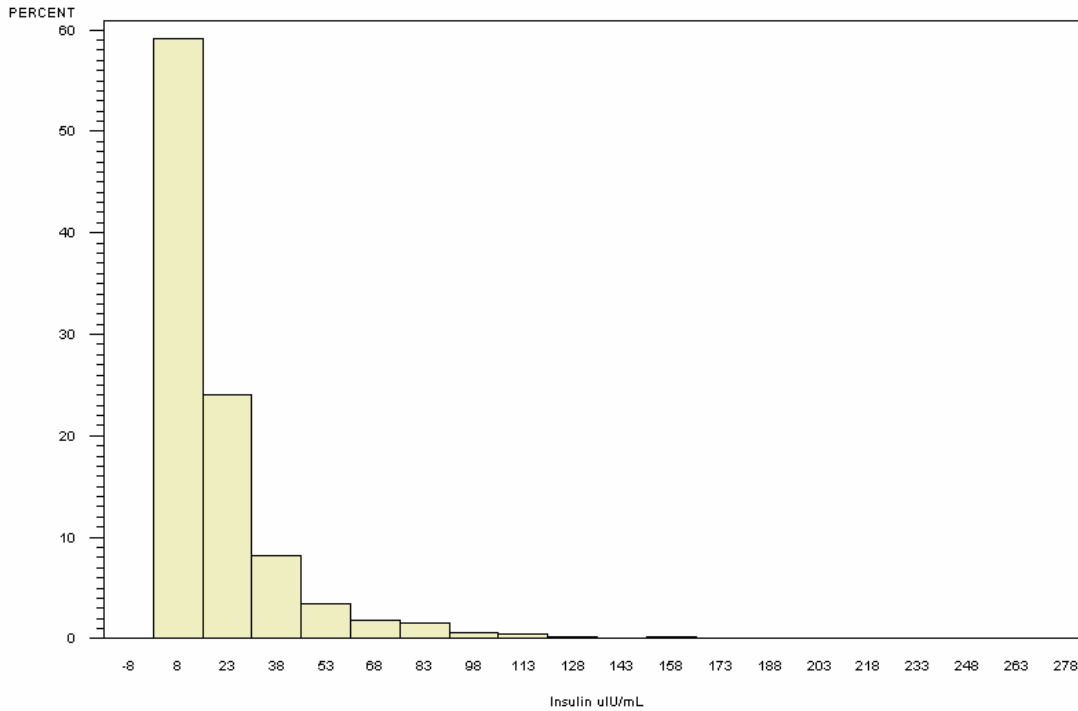


NORMAL RANGE 0.0-29.1 uIU/mL, TAKEN FROM <http://www.labcorp.com/datasets/labcorp/html/chapter/mono/sr002600.htm>

### INSULIN IN CHILDREN AGED <20 YEARS AFTER UNKNOWN HOURS OF FASTING

PARTICIPANTS=978, MEAN=19.06, STANDARD DEVIATION=23.28

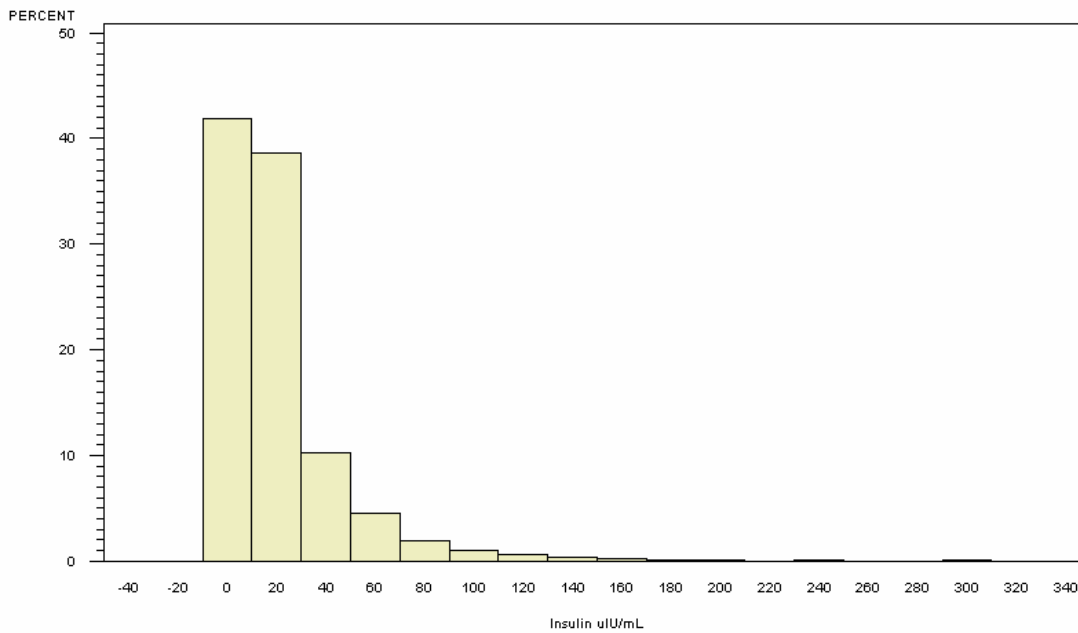
1<sup>st</sup> PERCENTILE=1.00, MEDIAN=11.80, 99<sup>th</sup> PERCENTILE=110.00



### INSULIN IN ADULTS AGED >19 YEARS AFTER UNKNOWN HOURS OF FASTING

PARTICIPANTS=4438, MEAN=20.97, STANDARD DEVIATION=27.17

1<sup>st</sup> PERCENTILE=1.00, MEDIAN=12.20, 99<sup>th</sup> PERCENTILE=132.00



NORMAL RANGE 0.0-29.1 uIU/mL, TAKEN FROM <http://www.labcorp.com/datasets/labcorp/html/chapter/mono/sr002600.htm>

#### Reader's Guide to Understanding This Information:

These graphs represent results for participants reporting a 4-8 hour fast prior to providing a blood sample. Due to the non-fasting status of these participants, these results are difficult to interpret with regard to insulin status.